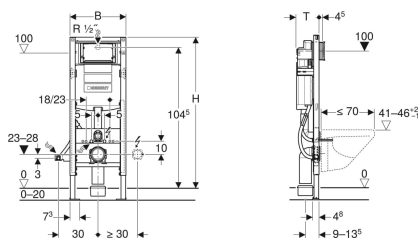


Geberit Duofix frame for wall-hung WC, 112 cm, with Sigma concealed cistern 12 cm, less-abled installation



Example image



Application purposes

- For drywall construction
- For installation in part or room-height prewall installations
- For installation in room-height installation walls
- For installation in part or room-height Geberit Duofix system walls
- Suitable for less-abled installation
- For wall-hung WCs with connection dimensions in accordance with EN 33:2011
- For wall-hung WCs with large projection up to 70 cm
- For floor constructions 0–20 cm

Characteristics

- Self-supporting frame, powder-coated
- Frame prepared for support brackets for WC ceramic appliances with small contact surfaces
- Frame width reduced for placement of support handles next to the element
- Adjustable installation height of WC during the installation phase, 41–46 cm
- Galvanized feet
- Feet adjustable 0–20 cm
- Non-slip leg supports
- Rotatable foot plates

Scope of delivery

- Water supply connection Rp 1/2" - R 1/2", compatible with MF, with integrated angle stop valve and hand wheel
- Protection box for service opening
- Connection set for WC, \varnothing 90 mm
- Connection bend 90° made of PE-HD, \varnothing 90 mm

- Foot plate depth suitable for installation in U-profiles UW 50 and UW75 and Geberit Duofix system rails
- Connection bend can be mounted without tools at different depths, adjustable range 45 mm
- Fastening for connection bend, sound-absorbing
- Concealed cistern with front actuation
- Concealed cistern, fully insulated against condensation
- Cistern fulfils standard requirements in accordance with EN 14055, Class II
- Immediate post flush possible with factory setting
- Tool-free installation and maintenance work on concealed cistern
- Water supply connection on the rear or top centre
- Protection cover box for service opening protects against moisture and dirt
- Protection box for service opening can be cut to length
- Equipped with conduit pipe for feed pipe for connection of Geberit AquaClean shower toilets
- With fastening option for electrical connection

Technical data

Flow pressure	0.1-10 bar
Maximum operating temperature, water	25 °C
Flush volume, factory setting	5.8 and 3 l
Flush volume small, adjustment range	2-4 l

- Adaptor socket made of PE-HD, \varnothing 90 / 110 mm
- 2 protection plugs
- 2 threaded rods M12
- Fastening material

Art. no.	B	H	T
111.352.00.5	42.5 cm	112 cm	17 cm

Accessories

- Geberit set of support brackets for WC ceramic appliances with small contact surfaces
- Geberit Duofix set of wall anchors for single installation
- Geberit Duofix set of wall anchors for single and system installation
- Geberit Duofix fastening set for stud clearance 50–57.5 cm
- Geberit concealed outlet for drywall and solid wall construction
- Geberit outlet mounting and communication connection box for frame for wall-hung WC



-
- Any boarding must be fixed tight up against the face of the Duofix frame and screwed directly to the frame
 - Flush valve features settings to enable either a 6 l and 3 l flush or a 4.5 l and 3 l flush. Note: must be used with pans designed for low volume flush
 - The cistern can be operated with used water (rainwater) provided it is passed through a filter system first
 - Without wall fixings
 - Elongated (750 mm) bowls are allowed on 111.352.00.5. This frame is limited on 70 cm, but this inside the tolerance