

# AQUAS<sup>®</sup> INSTRUCTION GUIDE AND USER MANUAL

INSTANTANEOUS ELECTRIC WATER HEATER - MANUAL

By

AQUABELLA SHOWER CO.,LTD.



AQUAMAX FULL PRO FLEX  
X JET 9.5KW



AQUAMAX PRO X JET 9.5 KW



AQUAMAX TOP SMART 9.5 KW



AQUAMAX FULL PRO  
FLEX SMART 9.5KW

## IMPORTANT!

This Step-by-Step guide should be given to the customer  
after installation and demonstration.

These instructions contain all the necessary fitting and operating instructions for your electric shower. Care taken during the installation will provide a long, trouble free life from your shower.

# PLEASE READ THIS IMPORTANT SAFETY INFORMATION

---



**WARNING:** DO NOT operate shower if frozen, or suspected of being frozen. It must thaw out before using.



**DO NOT** operate the unit if the showerhead or spray hose becomes damaged.



**DO NOT** restrict flow out of shower by placing showerhead in direct contact with your body.



**DO NOT** operate the shower if water ceases to flow during use or if water has entered inside the unit because of an incorrectly fitted cover.



**WARNING:** If restarting the shower immediately after stopping, be aware that a slug of hot water will be expelled for the first few seconds.

## PLEASE READ THIS IMPORTANT SAFETY INFORMATION (CONT.)

---

**IMPORTANT:** This appliance is not intended for use by persons (Including children) with reduced physical, sensory or mental capabilities, or lack of experience and knowledge, unless they have been given supervision or instruction concerning use of the appliance by a person responsible for their safety. Children should be supervised to ensure that they do not play with the appliance.

---

**IMPORTANT:** To comply with water regulations, building regulations or any specific local water company regulations and should be in accordance with BS EN 806. A double check valve must be fitted with all flexible shower accessories where it is possible that the showerhead may come into contact with used water i.e. In the bath or shower tray.

---

**IMPORTANT:** Before turning on the water supply to the shower unit the water supply pipe should be flushed out to remove debris. After flushing the pipework ensure that the shower unit is positioned squarely on the wall and tighten the screws. Tighten all plumbing connections and check the pipework for leaks.

---

**IMPORTANT:** Ensure that the terminal block screws are fully tightened and that no cable insulation is trapped under screws. Ensure the cable clamp is used to secure the cable. The earth continuity conductor of the electrical installation must be effectively connected to all exposed metal parts of other appliances and services in the room in which the shower unit is installed to confirm.

---

**CAUTION:** Check there are no hidden cables or pipes before drilling holes for wall plugs. Exercise great care when using power tools near water. The use of a residual current device (RCD) is recommended.

---

**IMPORTANT:** Turn the Temperature control knob anticlockwise until the valve is fully open before switching on the unit. This will ensure a fast fill up of the unit when the shower is first switched on.

---

**IMPORTANT:** The shower unit must be full of water before heat settings are used.

---

**WARNING:** If re-starting the shower immediately after stopping, be aware that a slug of hot water will be expelled for the first few seconds.

---

**ATTENTION:** Do not operate the shower unit if the showerhead or hose becomes damaged. The shower is designed and approved to EN-60335 with the showerhead provided. Under no circumstances must any showerhead that is not approved by the manufacturer be used with this product.

---

# IMPORTANT

---

- Shower Installation must be carried out by a suitably qualified person and conform with IEE Regulations and comply with water regulations, building regulations or any specific local water company regulations and should be in accordance with BS EN 806.
- This shower unit is designed to be connected to a direct cold water mains supply without draw offs that also feed other appliances or taps as this will impair performance. A direct connection from a tank supply with Pump is NOT recommended.
- To make sure of activating the heating elements, the shower must be connected to a mains water supply with a minimum running pressure of 100kPa (15 lb/sq in) - (1 Bar) at a minimum flow rate of 8 litres per minute. The maximum static pressure must be no greater than 1000kPa (150 lb/sq in) - (10 Bar). (Minimum running pressure must be obtained at 9 litres/minute)
- The shower unit must not be fitted where it may be exposed to frost, for example in an outdoor area. The shower must not be used if suspected of being frozen. Frost damage is not covered by the guarantee.
- Plumbers jointing compound must not be used. In instances of difficult joints use P.T.F.E. Tape. The use of compound invalidates the guarantee.
- All plumbing connections must be completed before making the electrical connections.
- Always switch off at the isolating switch when not in use.

## GENERAL ADVICE TO SHOWER UNIT USERS

---

The flow rate of water passing through the shower unit determines the water temperature. The lower the flow the warmer the water, the higher the flow the cooler the water.

The temperature produced by the shower unit will vary between seasons on any one setting of the temperature control. This is due to variance in the temperature of the water supply, which becomes cooler in winter than summer.

The stabiliser valve maintains an almost constant shower temperature during mains water pressure changes.

If changes in temperature are experienced in normal use, it is likely to be caused by water pressure falling below the minimum level. Falls in water pressure may be due to water being drawn off at other points within the building.

The showerhead and filter must be cleaned regularly to remove scale and debris. If the water becomes hot and you are unable to obtain cooler water, check the showerhead and filter for blockage.

# GENERAL LAYOUT OF A SHOWER INSTALLATION

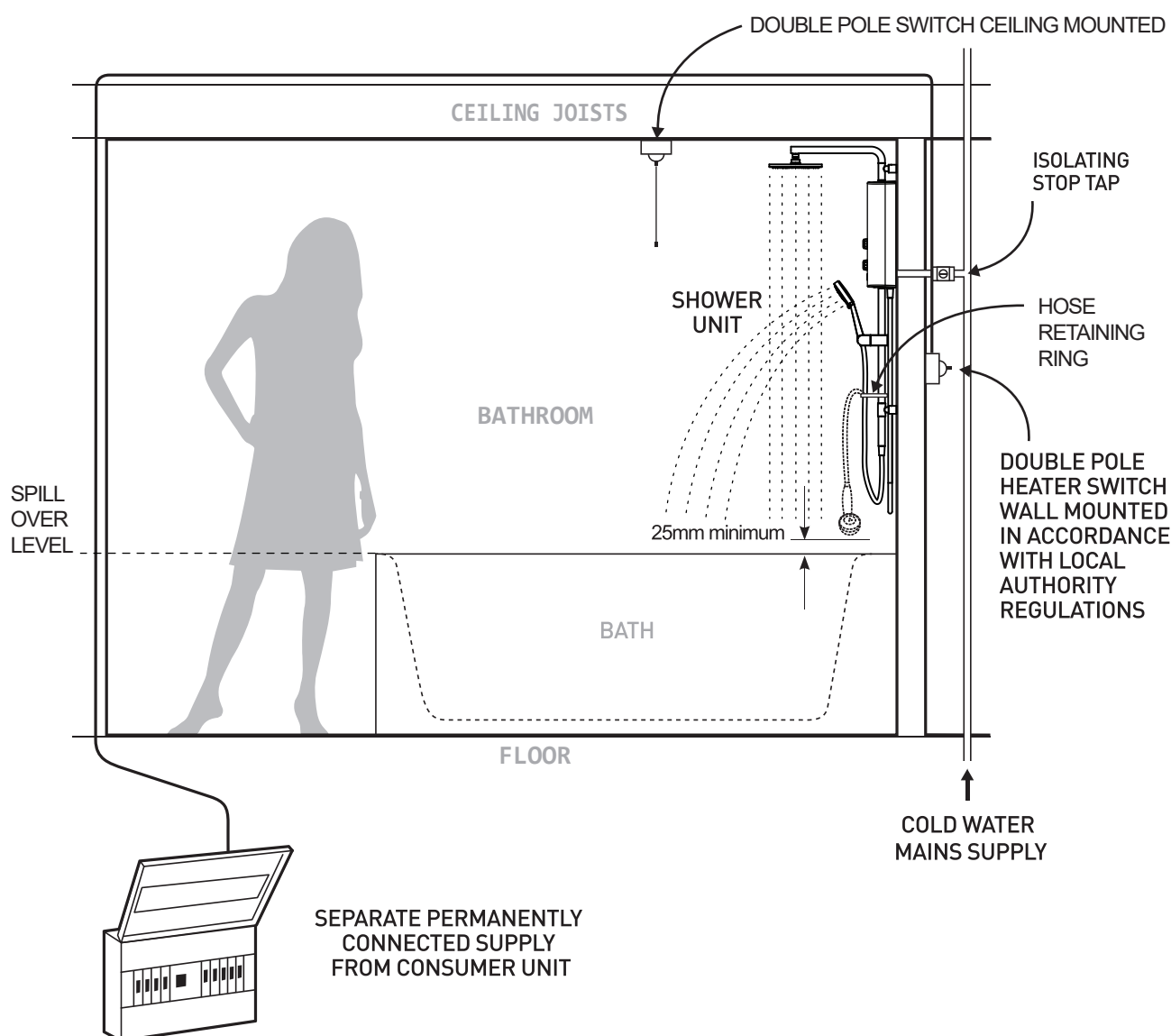
## A TYPICAL INSTANTANEOUS ELECTRIC SHOWER INSTALLATION

Plan your own installation carefully. Check on the nearest and most readily accessible rising mains water supply, this may be beneath the bath or in the loft, where it feeds the cold water storage tank. Use only the cold rising water main supply.

Do not connect the shower unit to the outlet from the cold water tank.

Avoid connecting the shower unit, if possible, where it will be affected by water drawn off by other appliances, e.g. From the mains feed to the W.C. This may cause a drop in pressure too low for the shower unit to work correctly.

An isolating valve must be fitted to comply with water regulations and for servicing purposes.

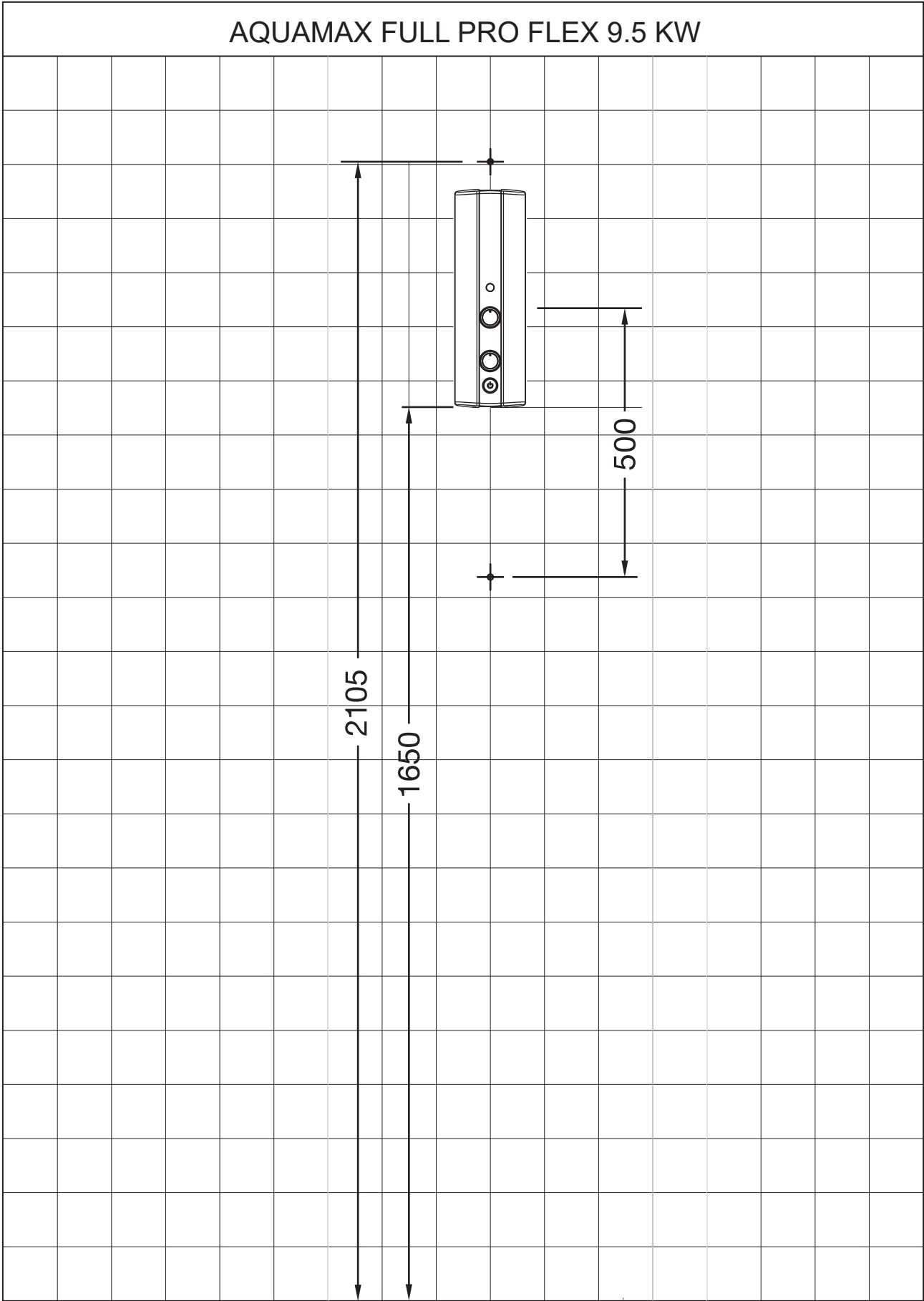


### ⚠ IMPORTANT ⚠

This appliance is not intended for use by persons (Including children) with reduced physical, sensory or mental capabilities, or lack of experience and knowledge, unless they have been given supervision or instruction concerning use of the appliance by a person responsible for their safety. Children should be supervised to ensure that they do not play with the appliance.

RECOMMENDED INSTALLATION DIMENSIONS FOR ALL MODELS

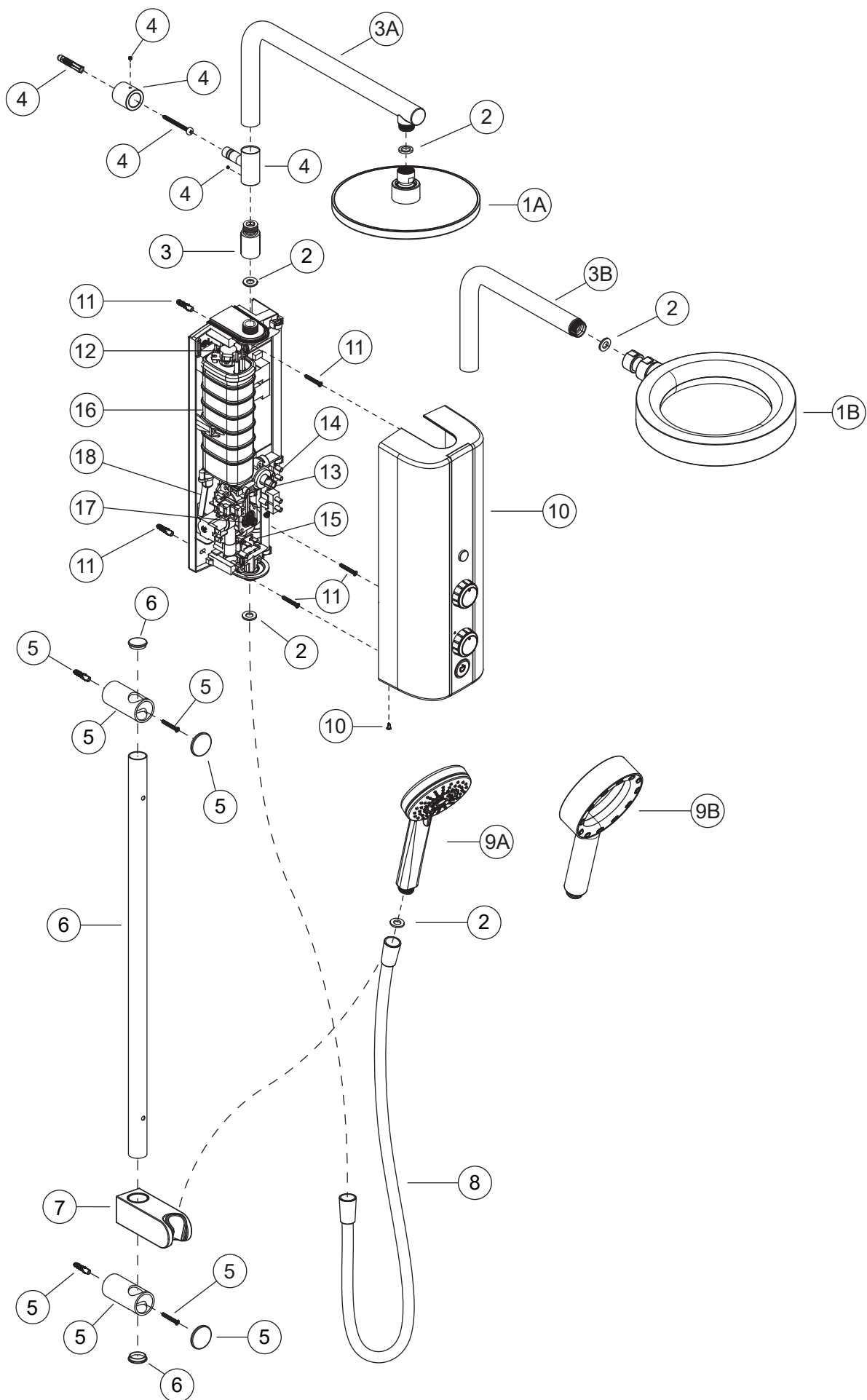
AQUAMAX FULL PRO FLEX , AQUAMAX TOP AND AQUAMAX PRO



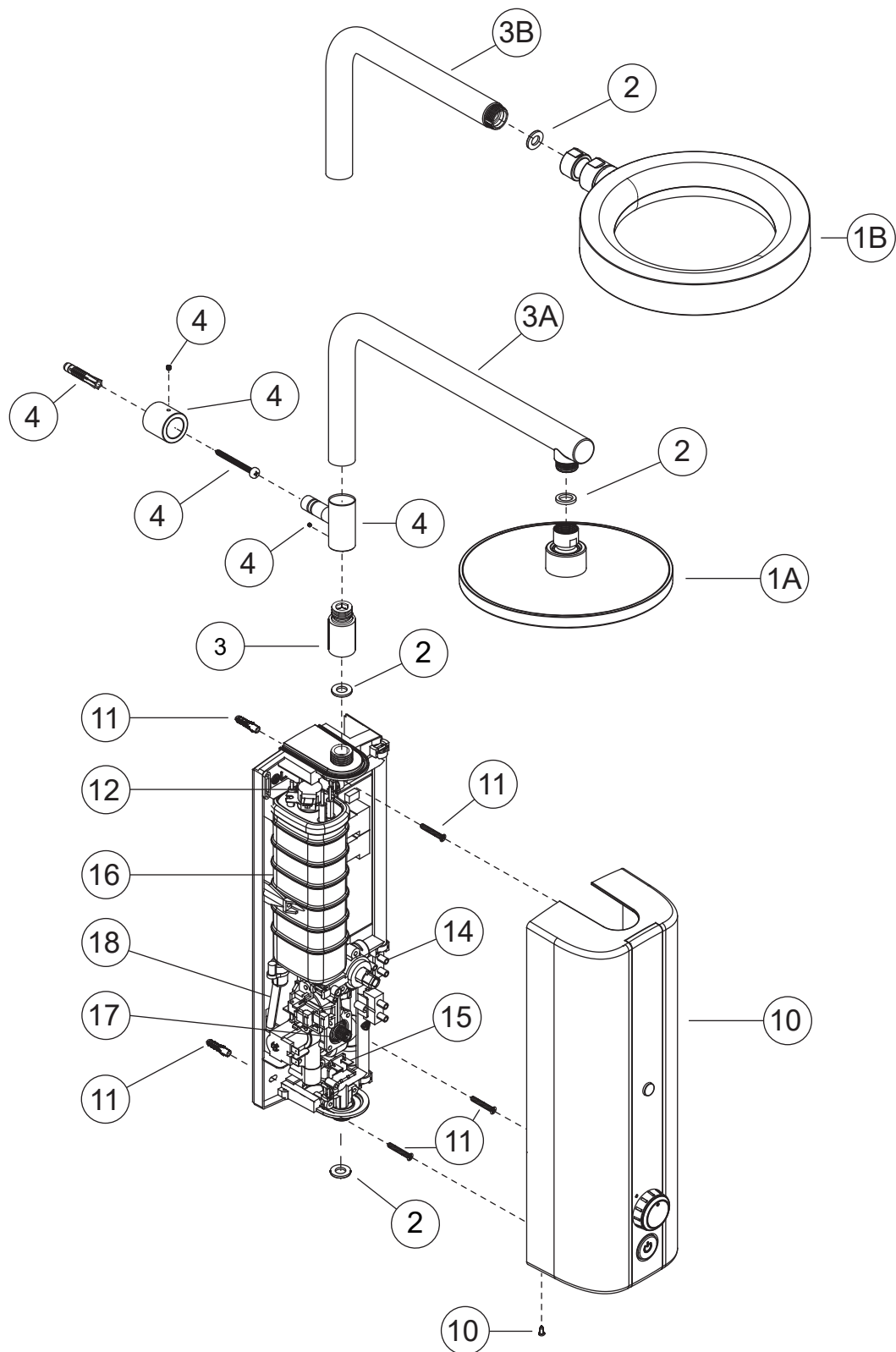
## SPARE PART DETAILS FOR AQUAMAX WATER HEATERS

No.	DESCRIPTION	AQUAS CODE
1A	OVERHEAD - SMART 200 - NO AIR CHROME	AS02001CP
1B	OVERHEAD X JET 200 CHROME	AS02086CP
2	2.5mm SEALING WASHER FOR SHOWER HOSE - PACK 5	AS06003
3	TOP CONNECTER FOR SHOWER ARM	AS07018CP
3A	NON ROTATION SHOWER ARM AND HEATER CONNECTOR FOR AQ5517 / AQ5611	AS07008CP
3B	NON ROTATION SHOWER ARM AND HEATER CONNECTOR FOR AQ5518 / AQ5612	AS07009CP
4	FREE FIX WALL BRACKET SET CW FIXINGS	AS10001CP
5	WALL BRACKET PACK FOR SLIDE BAR X 2 ( FREE FIX ) CHROME	AS05012CP6
6	SHOWER TUBE 600 X 25MM WITH END CAPS CHROME	AS05015CP
7	FRONT LOADING SLIDER MECHANISM CHROME	AS09002CP
8	SMOOTH 1.5M PVC SHINY HOSE WITH ABS CONICAL NUTS CHROME	AS06040CP
9A	HAND SHOWER BELLA 3F - NO AIR CHROME	AS03076CP
9B	HAND SHOWER X JET 1F CHROME	AS03146CP
10A	HEATER COVER COMPLETE 1 HANDLE WHITE	AS50001WH
10B	HEATER COVER COMPLETE 1 HANDLE GLOSS BLACK	AS50001GB
10C	HEATER COVER COMPLETE 1 HANDLE FULL CHROME	AS50001FC
10D	HEATER COVER COMPLETE 1 HANDLE WHITE	AS50002WH
10E	HEATER COVER COMPLETE 1 HANDLE GLOSS BLACK	AS50002GB
10F	HEATER COVER COMPLETE 1 HANDLE FULL CHROME	AS50002FC
11	SCREW FIXATION PACK FOR HEATER	AS50003
12	THERMAL CUT OFF DEVICE	AS50004
13	DIVERTOR VALVE ASSEMBLY FOR AQ5517 AND AQ5518	AS50005
14	ELECTRICAL TERMINAL BLOCK	AS50006
15	POWER SWITCH ASSEMBLY	AS50007
16	GRILLON HEATER TANK ASSEMBLY	AS50008
17	VOLUME CONTROL VALVE ASSEMBLY COMPLETE	AS50009
18	PRESSURE RELIEF VALVE TUBE	AS50010
19	FILTER	AS50011

# AQUAMAX FULL PRO FLEX 9.5 KW MANUAL WATER HEATERS

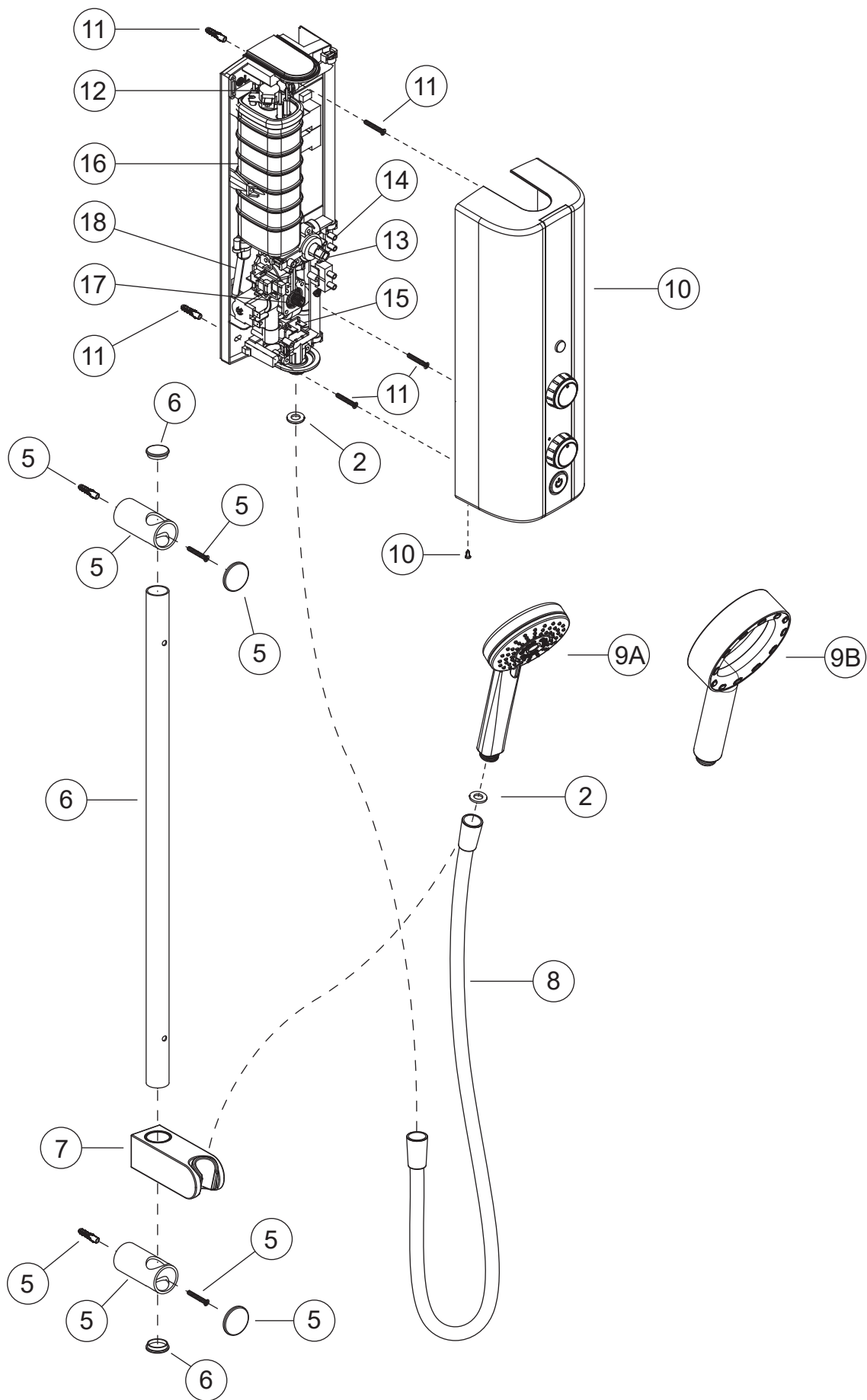


# AQUAMAX TOP 9.5 KW MANUAL WATER HEATERS





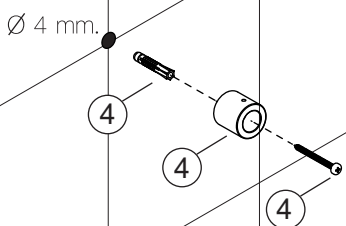
# AQUAMAX PRO 9.5 KW MANUAL WATER HEATERS



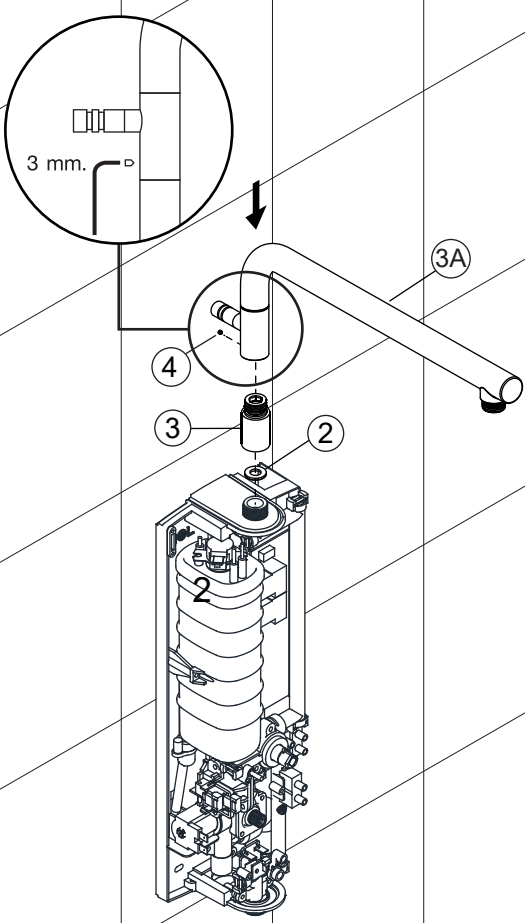
# ASSEMBLY OF UPPER SHOWERING COMPONENTS

## AQUAMAX FULL PRO FLEX AND AQUAMAX TOP

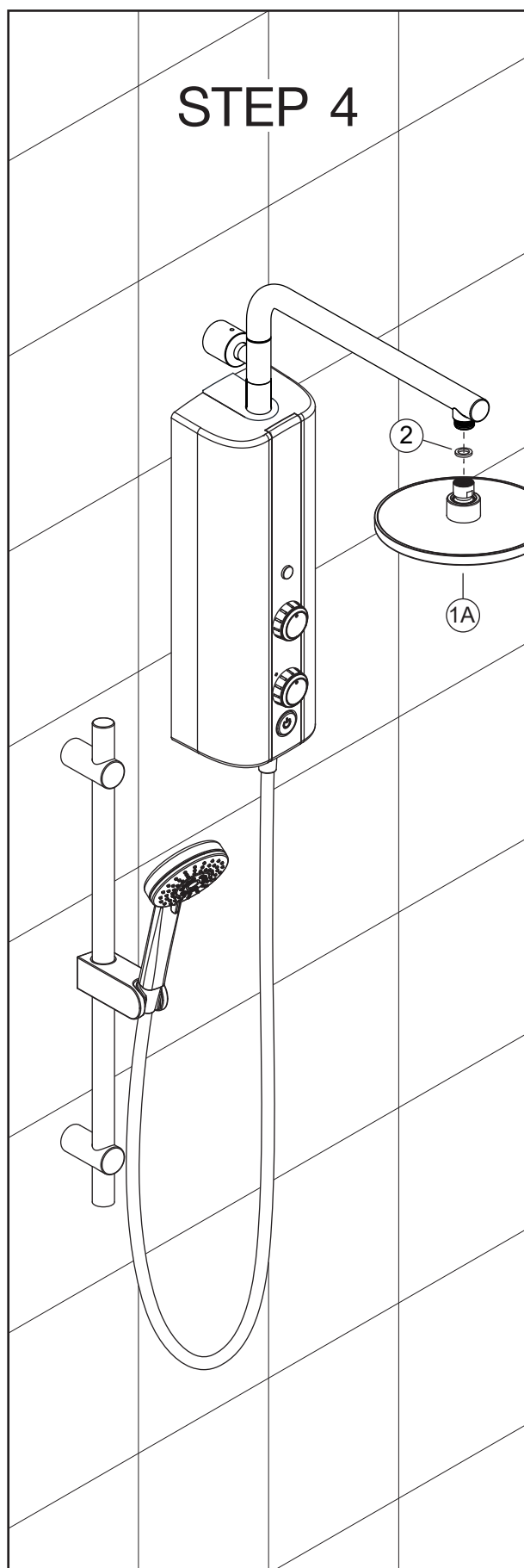
### STEP 1



### STEP 2



## AQUAMAX FULL PRO FLEX AND AQUAMAX PRO



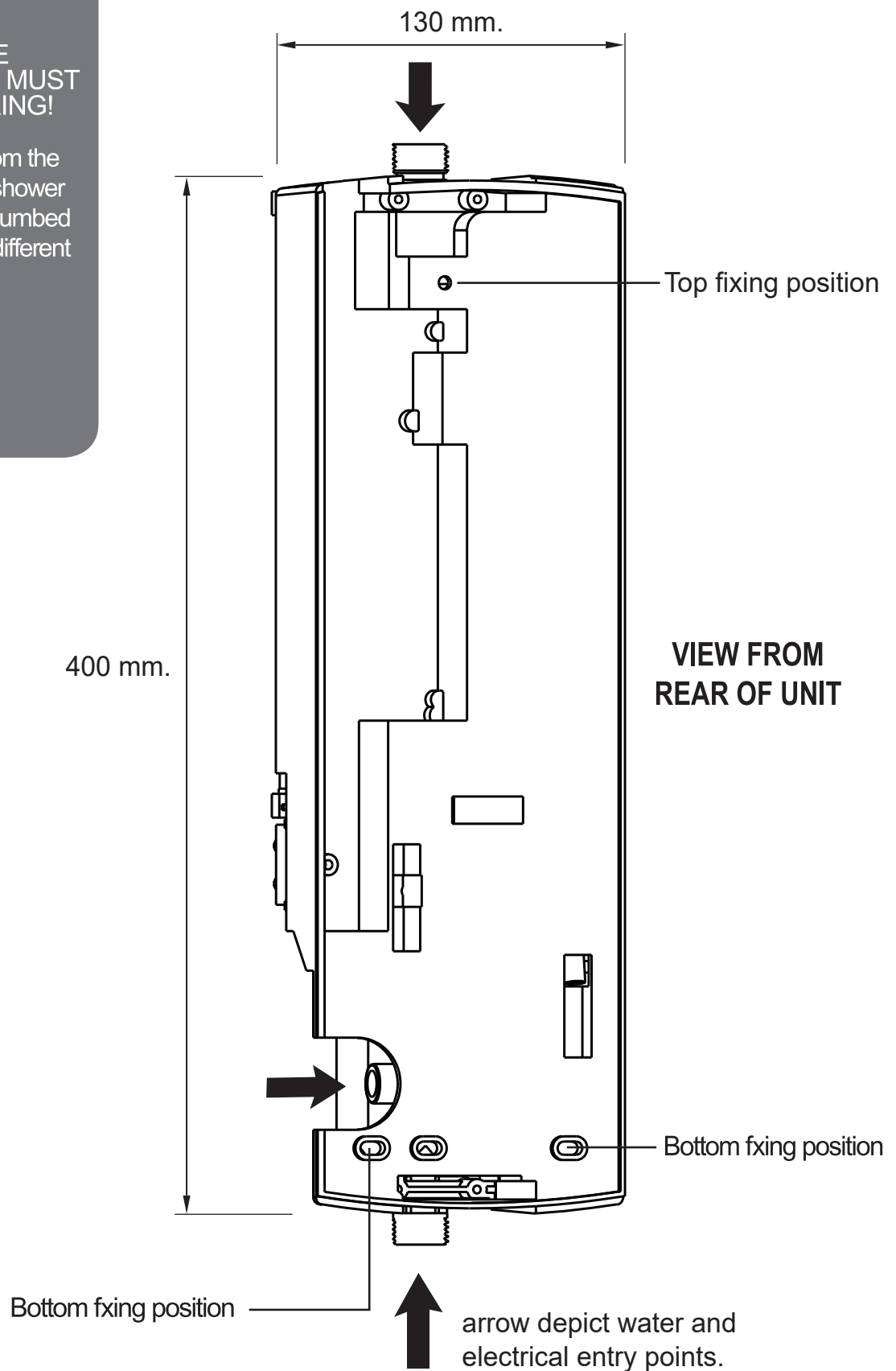
# PLUMBING CONNECTIONS

## NOTE!

PLUMBING THE SHOWER UNIT MUST PROCEED WIRING!

As you can see from the diagram right the shower unit can be both plumbed and wired from 3 different positions;

- Top right
- Bottom right
- Rear right



# PLUMBLING CONNECTIONS

---

Turn off the water supply at the isolating stop tap. Having determined the direction of the inlet water supply: Top (falling), Bottom (rising), or Back inlets. It is necessary to remove the appropriate plastic cross section from the back plate, before commencing with the installation.

We have incorporated into the bottom right & left-hand side of the back plate easy removable trim sections to allow easy access when connecting the water supply.

(Please Note! Remember to replace this trim section before refitting the cover).

Connect the mains water supply to the inlet of the shower unit using a 15mm copper, stainless or plastic pipe with a 15mm compression elbow or 15mm push-fit elbow.

Do not use excessive force when making the connection to the unit.

## DEFAULT PLUMBING SETTING

The shower unit is supplied for right hand installation. To plumb the unit on the left you must remove the blanking cap and refit it to the inlet pipe on the right hand side of the unit ensuring the metal fixing clip is pushed firmly into the groove. When leak testing the installation you must ensure there are no leaks from this area.

## ⚠ IMPORTANT ⚠

To comply with water regulations, building regulations or any specific local water company regulations and should be in accordance with BS EN 806. A double check valve must be fitted with all flexible shower accessories where it is possible that the showerhead may come into contact with used water i.e. In the bath or shower tray.

## ⚠ IMPORTANT ⚠

Before turning on the water supply to the shower unit the water supply pipe should be flushed out to remove debris. After flushing the pipework ensure that the shower unit is positioned squarely on the wall and tighten the screws. Tighten all plumbing connections and check the pipework for leaks.

# ELECTRICAL CONNECTIONS

## ELECTRICAL SPECIFICATIONS

Nominal Power rating at 240V	Nominal Power rating at 230V
9.5kW - (40A MCB rating)	8.7kW - (40A MCB rating)

The shower unit must be permanently connected to the electricity supply, direct from the consumer unit via a double pole linked switch with a minimum contact gap of 3mm. The switch must be readily accessible and clearly identifiable and out of reach of a person using a fixed bath or shower tray, unless the switch is cord operated. The wiring must be connected to the switch without the use of a plug or socket outlet.

The cable size required is determined by the kW rating of the shower and the distance between the shower and the consumer unit. The table below will help you choose the correct cable for your installation, but it will depend upon the precise circumstances of the installation. If you are in any doubt consult an electrician.

The incoming cable should be hidden.

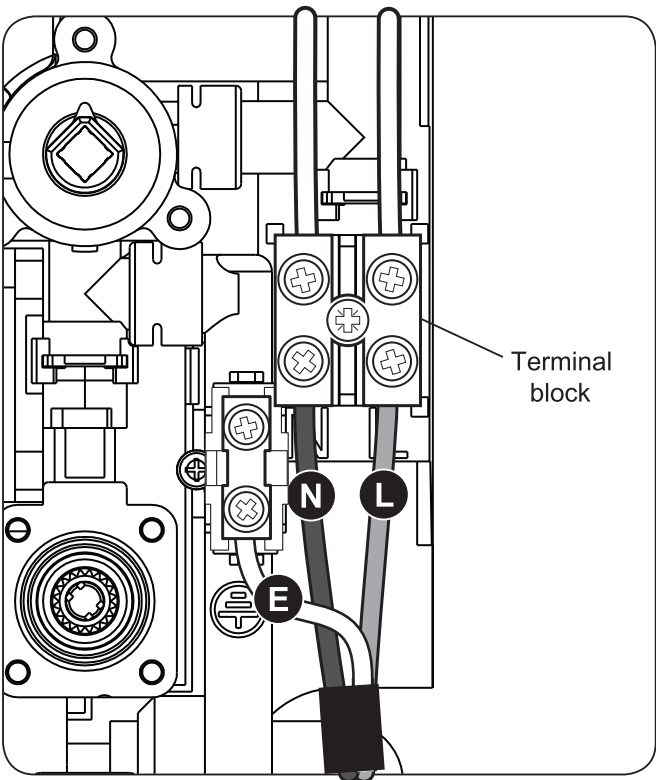
KW RATING	NOMINAL AT 240V	MIN RATING OF ISOLATING SWITCH	FUSE RATING	MAX CABLE RUN	
				6mm	10mm
9.5	39.58amps	40amps	40amps	21m	32m

The diagram below shows the route of the cable into the shower unit for connection to the terminal blocks, connect as follows:

Earth cable to terminal marked 

Neutral cable to terminal marked N

Live cable to terminal marked L



### IMPORTANT

Ensure that the terminal block screws are fully tightened and that no cable insulation is trapped under screws. Ensure the cable clamp is used to secure the cable. The earth continuity conductor of the electrical installation must be effectively connected to all exposed metal parts of other appliances and services in the room in which the shower unit is installed to confirm

# ELECTRICAL WIRING

---

**IMPORTANT:** When connecting the cable fully tighten the terminal block screws and make sure that no cable insulation is trapped under the screws. Loose connections can result in cable overheating.

**NOTE:** The elements on UK models are to 240V specification and will give a lower kW rating if the voltage supply is below 240V.

**NOTE:** The supply cable earth conductor must be sleeved. The outer sheath of the supply cable must be stripped back to the minimum.

The use of connections within the unit or other points in the shower circuit to supply power to other equipment i.e. extractor fans, pumps etc. will invalidate the guarantee.

**DO NOT** switch on the electricity supply until the shower cover has been fitted.

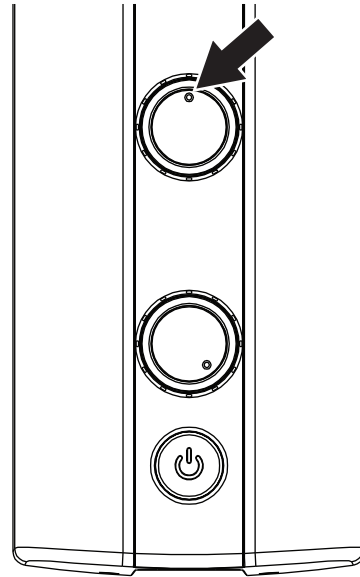
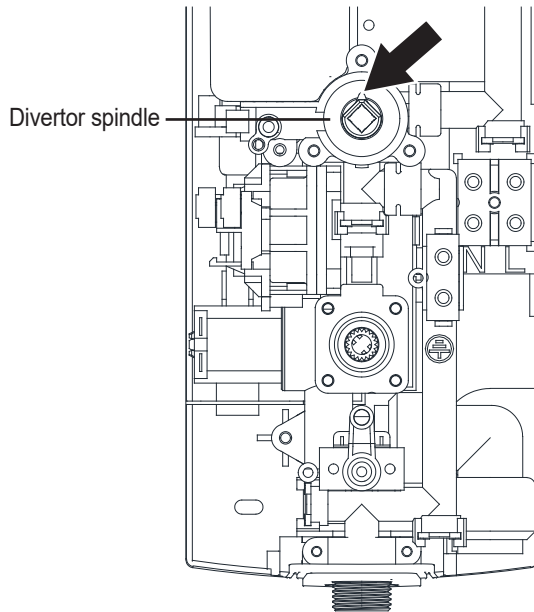
# FITTING THE BACK COVER INTO POSITION

---

When fitting the cover, it is important to align the diverter spindle and volume control spindle inside the heater.

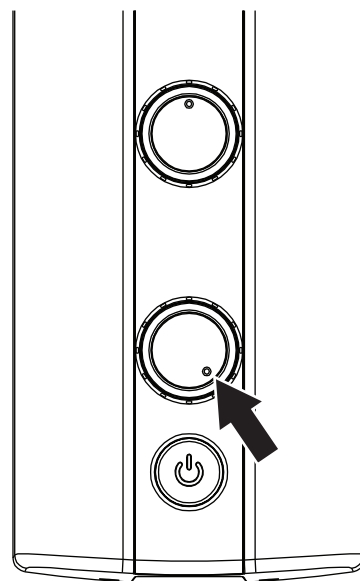
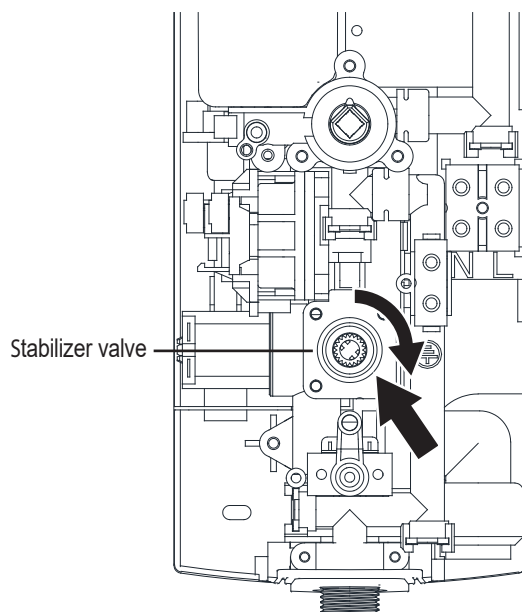
## DIVERTOR HANDLE ( UPPER HANDLE )

Make sure that the Divertor spindle and the raised button on the diverter handle are in the 12 O'clock position before fitting the cover.



## VOLUME CONTROL HANDLE ( LOWER HANDLE )

Turn the stabilizer valve spindle and volume handle fully clockwise until resistance is felt.



Fit cover into position and re-fit cover fixation screws.



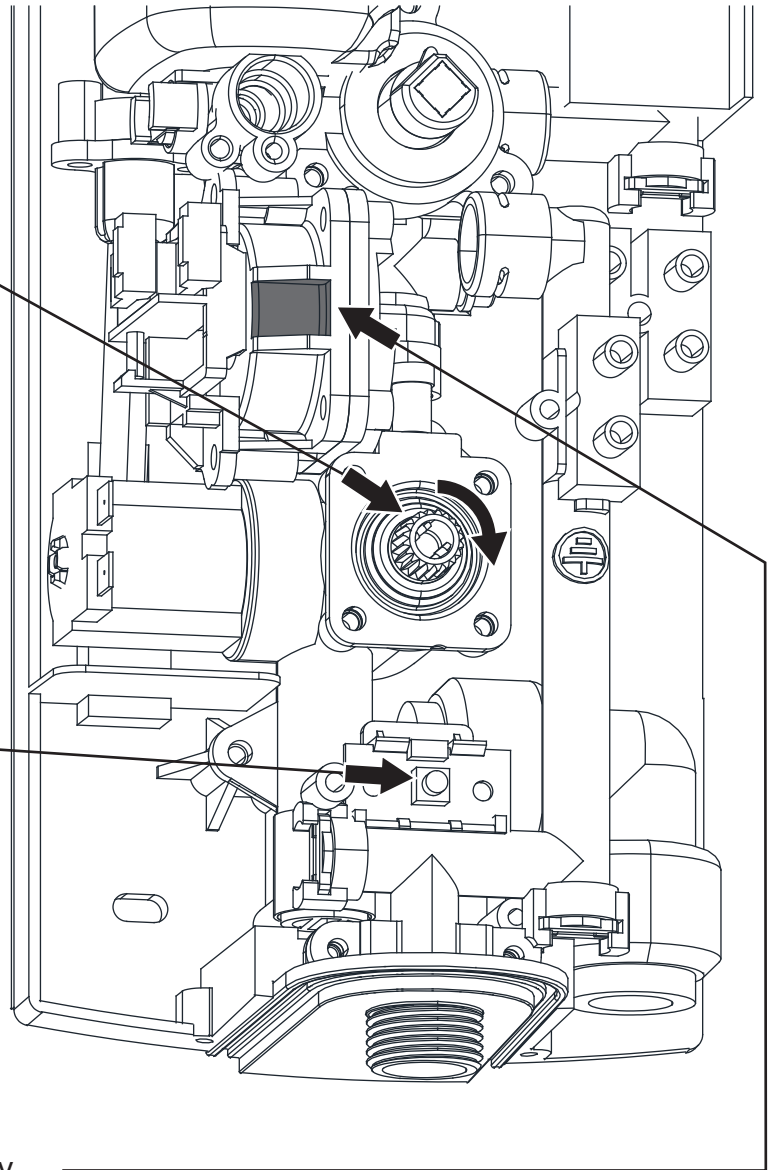
# COMMISSIONING THE SHOWER HEATER

## IMPORTANT NOTE FOR THE INSTALLER

1. Before installation,  
rotate the volume control  
handle clockwise until  
resistance is felt.  
Connect the water  
and electricity supply.

2. Turn on the water  
and electricity,  
before fitting the front cover.  
Push the on/off button,  
to check water flow and  
if there is any leakage  
inside the heater or  
at any shower connection.

3. Before fitting the cover,  
turn off the electricity supply.  
Remove this square plastic part  
in the picture. Fit the front cover.  
Turn on the water and electricity again,  
and the product should now work normally



**WARNING** ....failure to remove that part after commissioning  
will result in NO hot water reaching the shower.

### ⚠ IMPORTANT ⚠

Turn the Temperature control knob anticlockwise until the valve is fully open before switching on the unit.  
This will ensure a fast fill up of the unit when the shower is first switched on.

### ⚠ IMPORTANT ⚠

The shower unit must be full of water before heat settings are used.

# OPERATING THE SHOWER

---

1. Switch on electrical supply - pull cord or wall mounted switch.

2. Press the ON / Off Button to start the flow of water.

3. Turn the diverter handle  
to select the showering  
function you require  
Left for Hand-shower  
& Right for Overhead.

4. When turning the Volume  
Control Handle, this will  
change the output  
temperature of the water.

5. In the winter months,  
the heater should be operated  
at full power ( 9.5 KW )  
to ensure an adequate amount  
of hot water  
In the summer months,  
the ECO button can be activated  
which will reduce the KW output  
down to 5.0 KW.

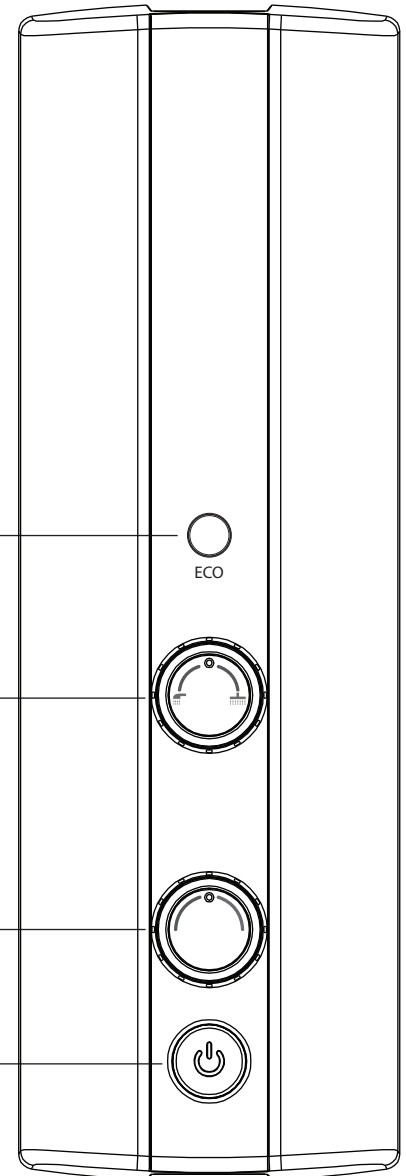
6. To turn off the shower unit,  
press the ON / OFF button.

SUMMER SETTING /  
ECO POWER BUTTON

DIVERTOR HANDLE  
HAND-SHOWER  
OR OVERHEAD FUNCTION

VOLUME CONTROL HANDLE

ON / OFF BUTTON



## IMPORTANT NOTES

The Higher the flow the temperature will decrease.

The Lower the flow the temperature will increase.

It is recommended that you start the shower with the volume handle in the fully  
anti clockwise / cold position as this will provide maximum flow

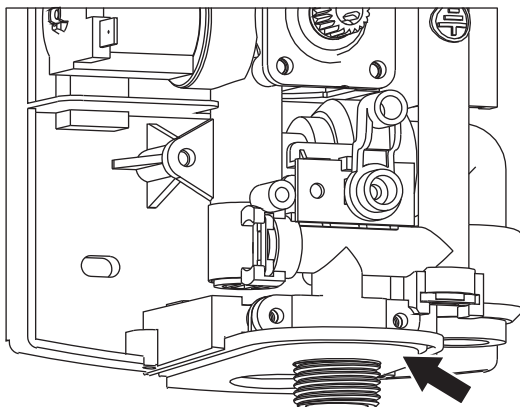
If a higher outlet temperature is required, Rotate the volume handle in a clockwise direction.

# MAINTENANCE – CLEANING THE FILTER

---

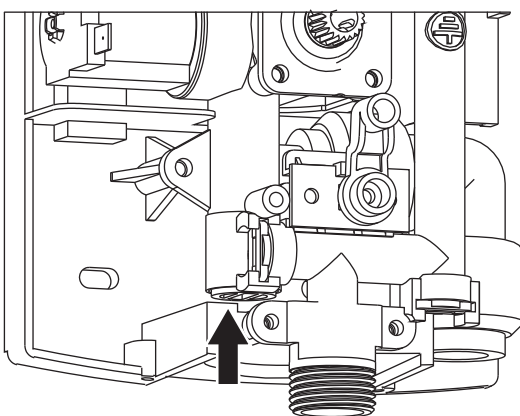
## STEP 1

Remove front cover assembly, loosen these two screws, the decor cover can be removed.



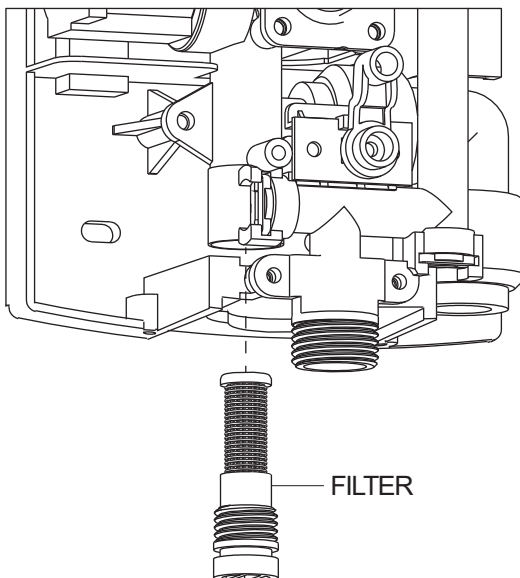
## STEP 2

Use flat-head screw driver to remove filter, clean it, and refit.



## STEP 3

Clean the filter and refit.



# SHOWERHEAD CLEANING INSTRUCTIONS

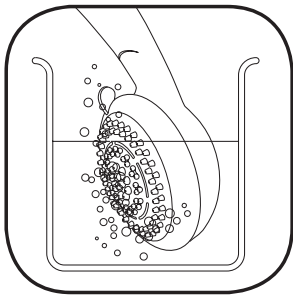
---

The showerhead should be cleaned periodically to remove limescale or debris which will reduce the performance of the shower. The frequency of cleaning will vary according to local water quality.

## PERIODICAL MAINTENANCE

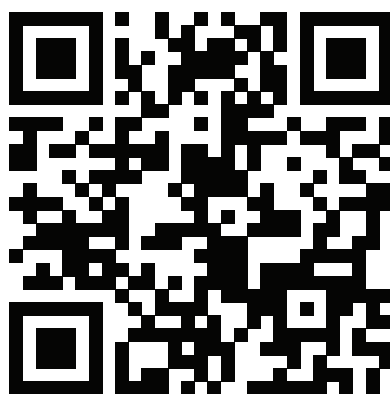


1. To break away scale deposits on a daily basis simply rub your thumb over the surface whilst the shower is running.



2. If scale deposits are stubborn, Soak the shower-head or hand-shower in a proprietary Limescale remover and rinse thoroughly before use.

**Register your product  
for full warranty!**



[http://aquasshower.co.uk/  
en/info/service-registration](http://aquasshower.co.uk/en/info/service-registration)

Your AQUAS Branded heaters are supplied by Aquabella Shower Co.,Ltd. in Thailand.  
For information or service assistance , please contact the installer or the local  
UK distributor from where the heater was purchased.