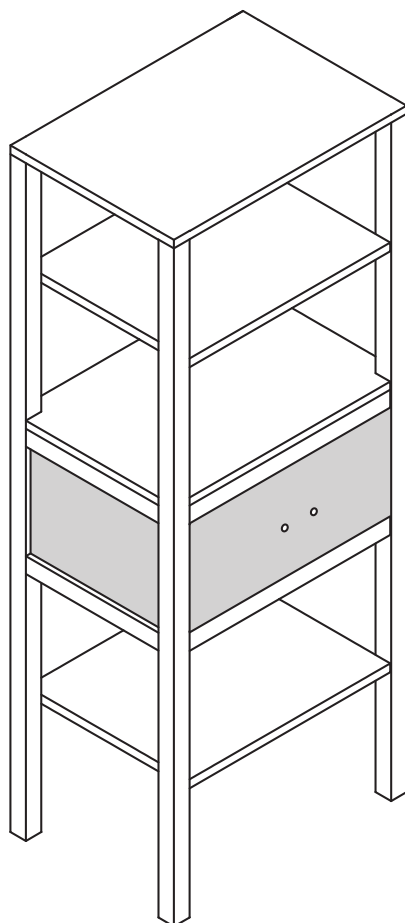




## **Alchemy Tall Shelf Unit**



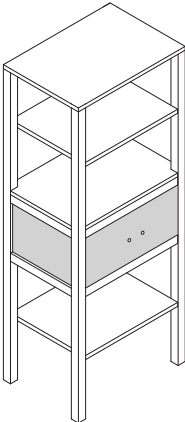
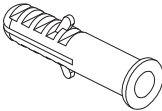
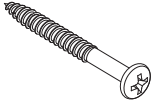
## **Fitting Instructions**

Please follow them carefully and  
leave this manual with end user

Before you begin:

- 1. We recommend that this product is installed by a qualified tradesperson, Victorian Plumbing Ltd. accept no liability for products incorrectly installed or any damage to the floor, walls, plumbing, vanity cabinet or personal injury during installation.
- 2. Check the chosen wall space for any pipes/cables prior to drilling.
- 3. We recommend that Wall Mounted Tall Units must be fastened to a load bearing wall. Check the type of wall you are fixing into and use suitable fixings.
- 4. Observe all local plumbing and building codes & regulations.
- 5. Unpack the product then read these instructions before proceeding. Inspect the product for damage. If any damage is found, contact our Customer Relations team.

Items Included:

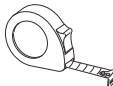
No.	Description	Picture	Qty
A	Tall Shelf Unit		1
B	Ø10x42mm Rawl Plug		2
C	M6x60mm Screw		2

Tools Required (Not Included):

\*Ensure the appropriate PPE is used during installation\*



Pencil



Tape Measure



Drill



Screw Driver



Spirit Level



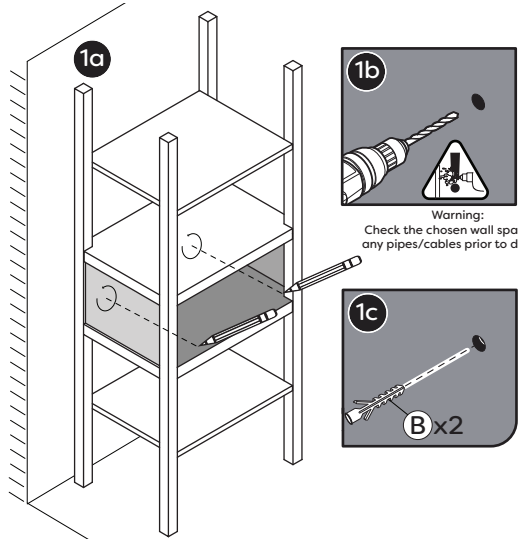
Adhesive

# Installation

Diagrams are for illustration purposes only. Your Tall Unit may superficially differ from these drawings however the installation guide steps still apply.

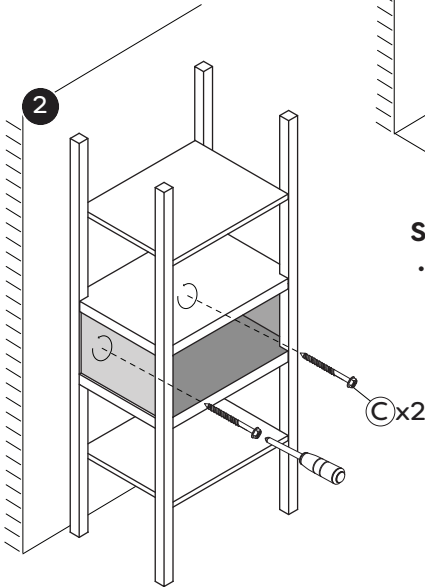
## Step 1:

- Place the unit up against your desired wall then mark the positions of the pre-drilled holes at the back plinth of the unit.
- Drill the holes in the wall using the appropriate sized drill bit, then insert the rawl plugs.



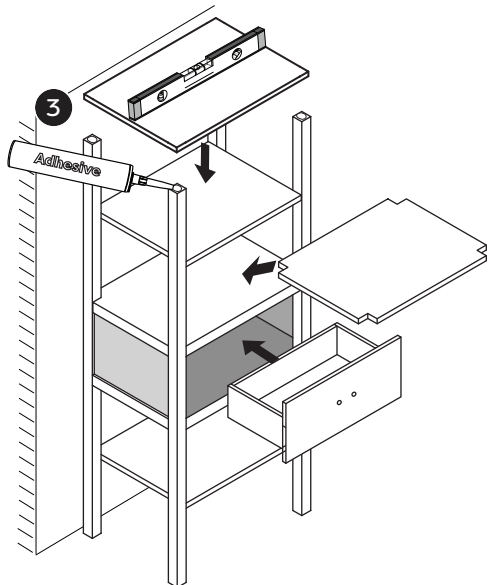
## Step 2:

- Place the unit up against your chosen wall. Using the screws provided. Secure the unit to the wall by screwing into the rawl plugs.



## Step 3:

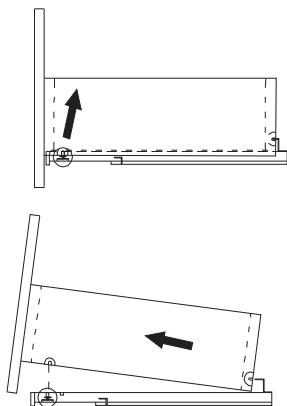
- Pipe a fine bead of good quality adhesive across the tops of the legs then carefully place the top shelf on the legs. Ensure the shelf is level using a spirit level.
- Slide the drawer into the unit by slotting the drawer onto the rails. Slot the countertop on top of the drawer.



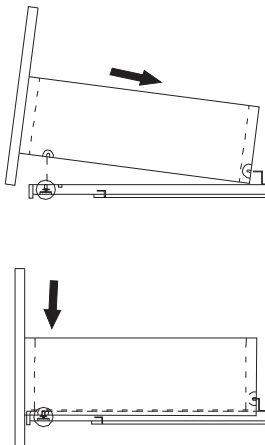
## Remove and Re-fit Drawer

- Remove the drawer from the cabinet prior to fitting the unit to the wall. Pull out the drawer to its full extension and gently lift the drawer box upwards until it disengages from the runner.
- To re-fit the drawer, fully extend the drawer runners and locate the drawer box onto the runners. Push the drawer box fully in until you hear a 'click'. The drawer should now be correctly located onto the runners.

### Remove Drawer



### Re-Fit Drawer



---

## Cleaning and Maintenance:

### Drawers, and Runners:

These should be wiped out with a damp soapy cloth and wiped dry with a soft cloth as necessary. The roller runners and hinges are lubricated and should not be cleaned with a degreasing agent as this will affect the action of the moving parts. Never lean on partially or fully opened drawers in order to gain access to the units. The hinges are specified to adequately support the weight of the drawer, plus small additional weights such as wire accessories. It is advised that once the vanity unit has been installed you should check every six months that all screws on the hinges are tight.

**Please Note:** Unit is water resistant, but not waterproof. All spillages and splashes should be wiped dry, failure to do so may shorten the life expectancy of the product and invalidate any guarantees.

### Recycling and Disposal:

Please recycle the packaging in accordance with your local government regulations on waste handling and follow the same advice at the end of the products life.