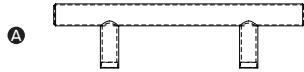


Handle Installation Instructions

Pack Contents:



A

A. Handle x 1

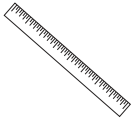


B

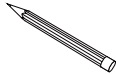
B. Screws x 2

Please keep these instructions for further reference

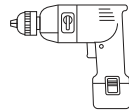
Tools Required:



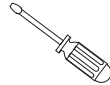
Ruler



Pencil



Electric Drill



Screwdriver

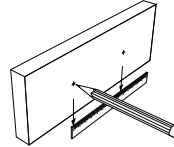
Health And Safety:

When using the product, basic safety precautions should always be followed to reduce the risk of injury including the following:

- This product must be installed by a competent adult.
- The provided screws are designed for mounting the product on wooden doors.
- Ensure children and pets are kept at a safe distance during installation.

Assembly And Use:

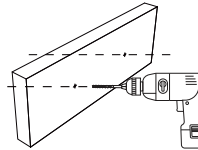
1



Measure and Mark

Measure each hole location using a ruler and mark it with a pencil. Be sure to check for level.

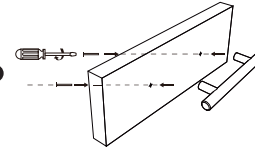
2



Drill

Drill through the drawer or cabinet door fronts. Use a 4.5MM drill bit.

3



Mount

Install the cabinet hardware with a screwdriver and the screws provided.

Care And Cleaning:

To ensure a longer-lasting finish for your handles, please adhere to the following requirements:

- Avoid using cleaners or acidic chemicals to polish or clean the product to prevent oxidation.
- Refrain from scrubbing handles with heavy or sharp-edged objects.
- Regularly check the components to ensure all screws are tightened securely.

For more information visit: www.victorianplumbing.co.uk