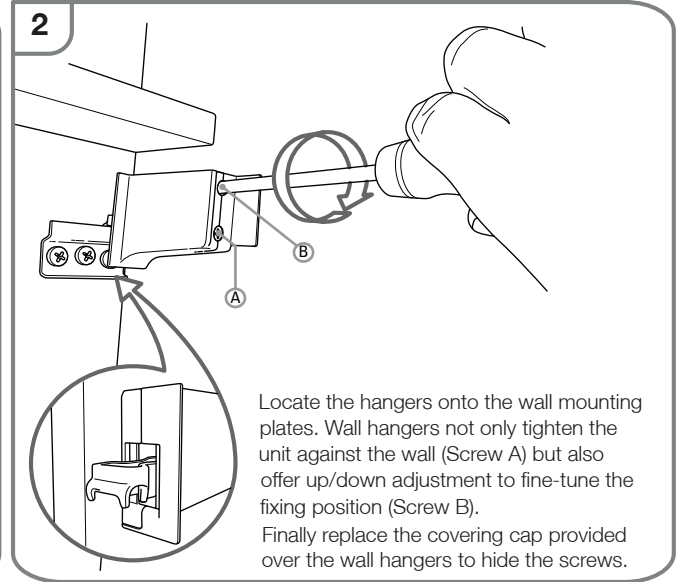
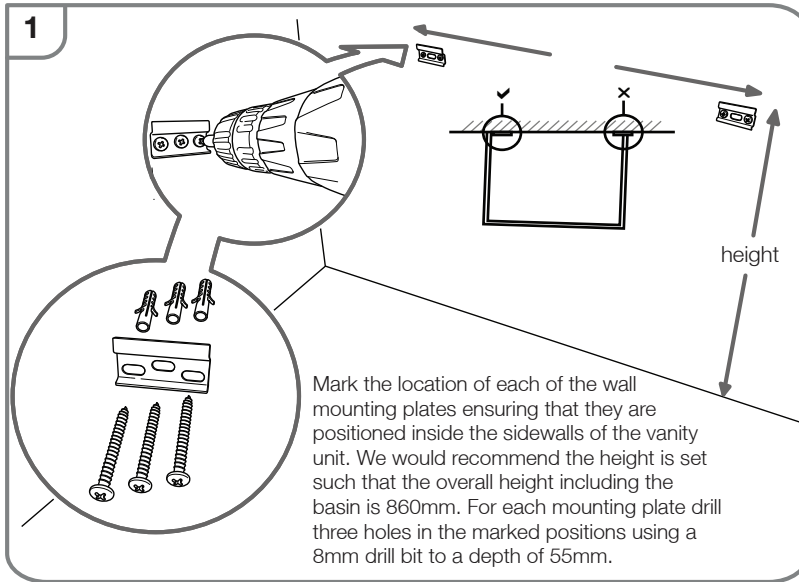


Please retain for future reference.

Before you start

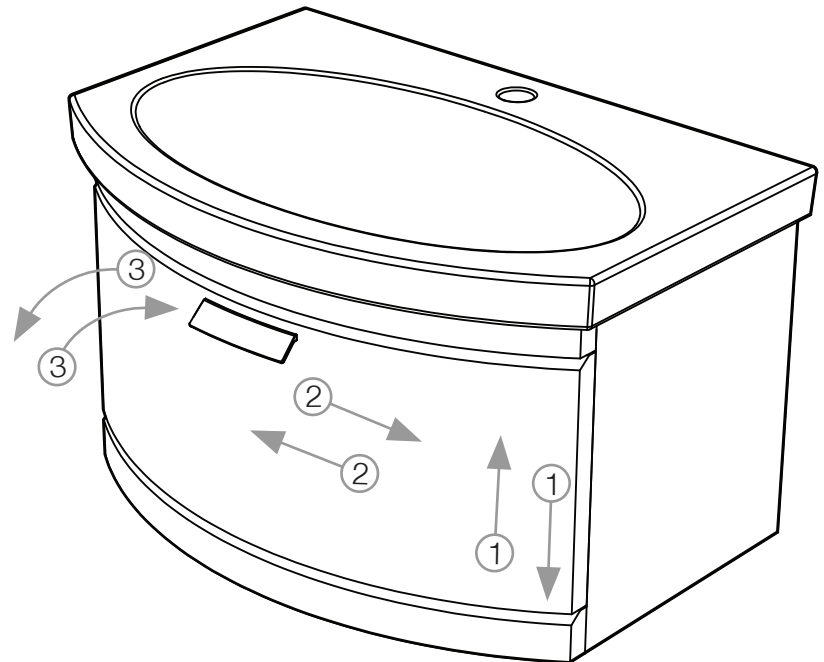
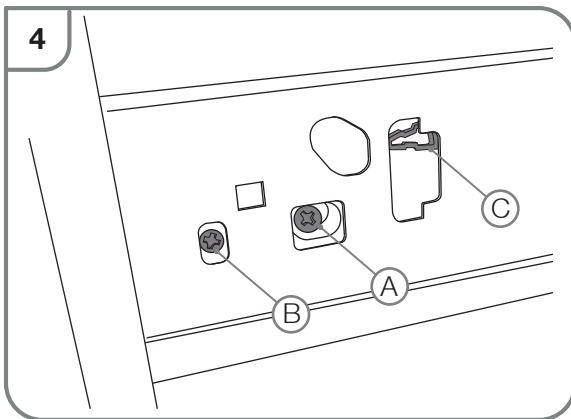
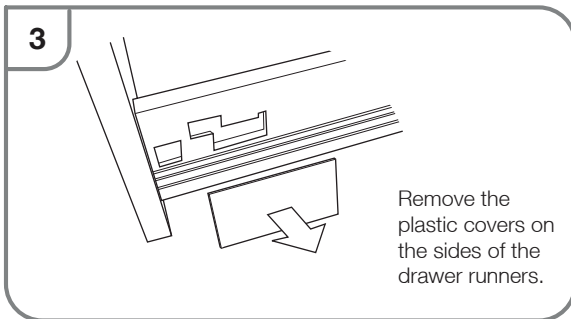
It is recommended that the unit and basin are secured to a suitably reinforced wall to ensure stability. This should be done by screwing through the upper brace. Screws not supplied.

Wear suitable eye protection when drilling. Take care when using power tools near water - the use of a residual current device (RCD) is recommended. Beware of hidden pipes or cables. Take care when drilling tiled surfaces as the drill might slip. Use a piece of masking tape to prevent the drill from wandering.



Drawer Fascia Adjustment

Fascias may require adjustment for correct alignment. If adjustment is required follow instructions below.



To make adjustment 1 (Up and Down)
turn screw A (see Drawing 4)

To make adjustment 2 (Left and Right)
turn screw B (see Drawing 4)

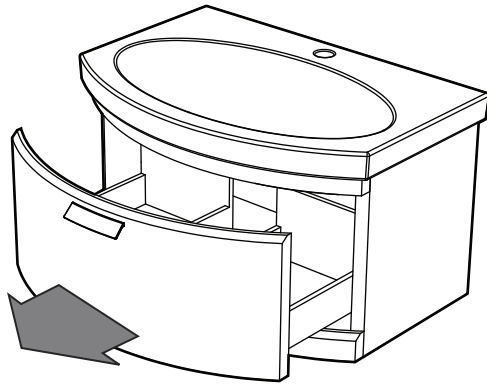
To make adjustment 3 (In and Out)
adjust rail (see Drawing 5)

Please retain for future reference.

Drawer Removal

The drawers of this unit can be removed. To remove the drawers, follow the instructions below.

6



Fully extend the drawer, pull up on the clips C (shown in figure 4) and give a short sharp pull. The drawer will come away from the runners.

Fitting ceramic basin

Once the basin has been plumbed in finish by securing to the washstand using a silicone sealant (not supplied).

Replacement components

Should you require any replacement components for this product please contact Tavistock using the contact details below.

Real wood finishes

This applies to the Maple and Walnut finishes. Real wood finishes can change colour over time if exposed to large amounts of direct sunlight. This is a property of the finish. To prevent this, position the furniture in an area where there will be minimal exposure to direct sunlight.

All wooden furniture should be treated with care...

We recommend



Wipe away any water splashes or condensation after use. Excessive exposure to water will deteriorate the furniture.



All bathrooms should be well ventilated with a suitable extractor fan.



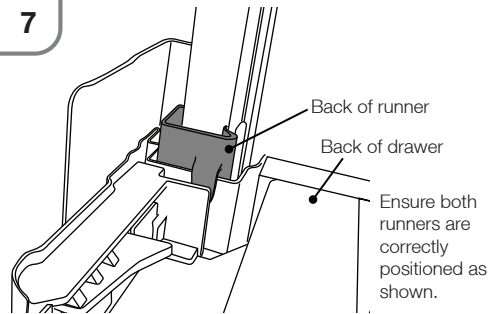
Clean with a soft damp cloth only.



Use a wax free polish if one must be used.

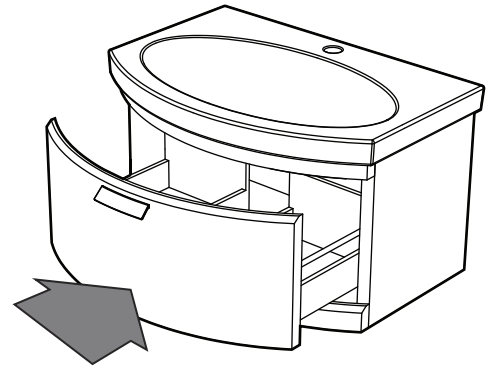
For removal of lime scale deposits use a suitable proprietary cleaner. If necessary test on an inconspicuous area first.

7



To replace the drawer put the drawer back on the runners. Slide the drawer backwards as you would normally to close it, and push firmly until you here the drawer click in place at the back of the runners.

To test whether it is in properly, simply pull the drawer out to full extension and see whether the drawer holds in place.



Please DO NOT...



Do not scrub or scour



Do not use abrasive cleaning agents