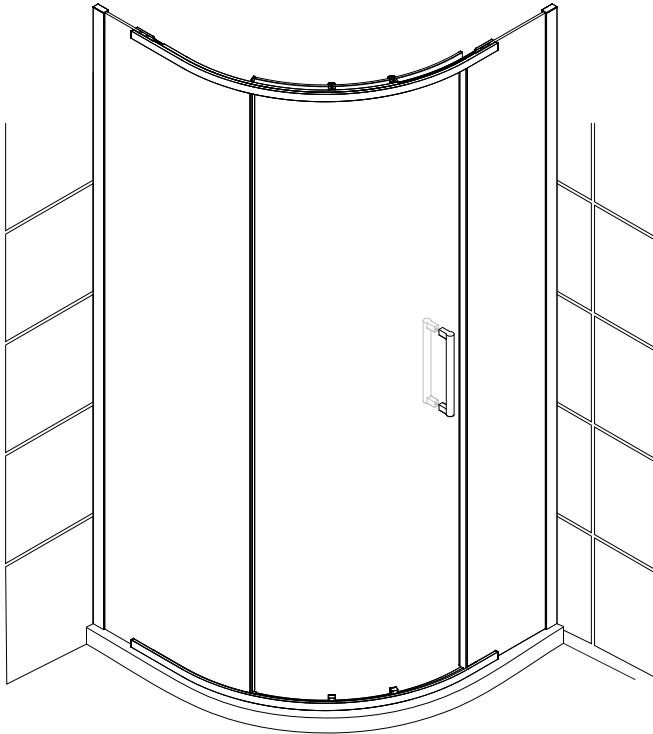


# Frameless Quadrant Enclosure



These instructions must be left with the user

---

## Installation Guide

---

# Introduction

---

Thank you for purchasing a quality Mira product. To enjoy the full potential of your new product, please take time to read this guide thoroughly, having done so, keep it handy for future reference.

The following pages aim to provide comprehensive installation instructions, plus advice on how to care and maintain your product.

We recommend that the unit is installed by a qualified plumber or engineer.

## General Information

---

### General

1. Read all of these instructions and retain this guide for later use.
2. Pass on this guide in the event of change of ownership of the installation site.
3. Follow all warnings, cautions and instructions contained in this guide.
4. Remove all protective tape from the enclosure before installation.
5. Excessive flow rates may lead to overflowing and leaking.
6. Water Spray may extend beyond the entrance of walk-in enclosures and we recommend tiling of the adjacent area.
7. We recommend a drainage test is carried out to ensure the waste is adequate for the flow delivered.
8. Doors that open outwards may drip water onto floor, ensure the floor covering will not be affected by water.
9. Walk ins and divider panels are designed to minimise water escaping outside the enclosure but by their very nature are not fully water tight.

### Safety Information

1. Care should be taken when drilling into walls and floors to avoid any hidden pipes or wires.
2. We strongly recommend that all glass panels are moved by a minimum of two people and that any protective packaging along the glass edges is kept in place for as long as possible to prevent damage before installation.
3. Wear protective footwear when lifting panels.
4. Wear safety glasses when drilling.

## Before Fitting the Enclosure

1. Ensure the tray is level and walls are vertical and square.
2. Shower fittings should be positioned such that water discharges down the centre line of a bath or across the opening of a shower cubicle door.
3. Ensure water is not directed at the shower door or side panels. This could result in water spraying outside of the enclosure.
4. Ensure the door opening is positioned correctly and is adequate for all users.
5. Ensure there is a complete silicone seal between the tray and finished wall.
6. Ensure the door is undamaged and no parts are missing.
7. Ensure the size of door/panel is suitable for the installation. Tempered safety glass cannot be cut.
8. Ensure nothing can impact the door or glass panels during operation.

## When Fitting the Enclosure

1. The wall channels must be installed onto a tiled or waterproof finished flat and even wall surface. Failure to do so will result in an unsatisfactory seal, which may cause property damage.
2. We recommend our enclosures are fitted onto shower trays.

**Warning!** The use of grout/tile cleaners, scale removers, abrasive scourers, drain unblockers and other powerful detergents may lead to damage of metallic, plated and plastic surfaces, including the tray and shower waste.

## Use of the Enclosure

1. High water pressure and flow may lead to excessive splashing causing water to escape outside of the enclosure.
2. In certain circumstances such as cleaning, water sprayed directly at the seals may escape outside of the enclosure.
3. With any walk in or open ended enclosure, splashing may cause water to escape outside of the enclosure.

# Guarantee

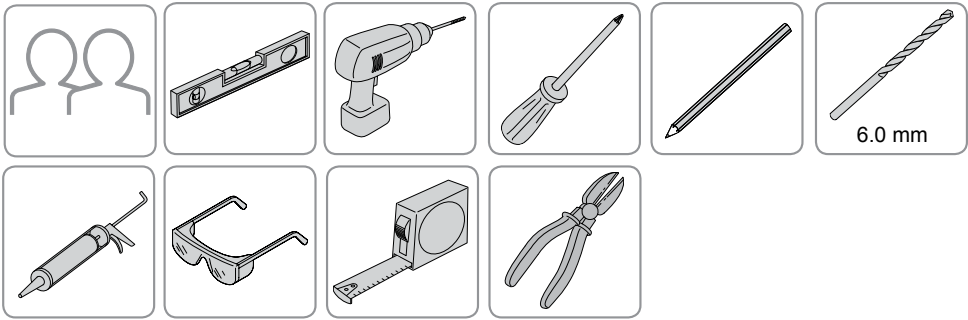
---

Your enclosure has the benefit of our guarantee which starts from date of purchase. For terms and conditions refer to the guarantee booklet packed with the product.

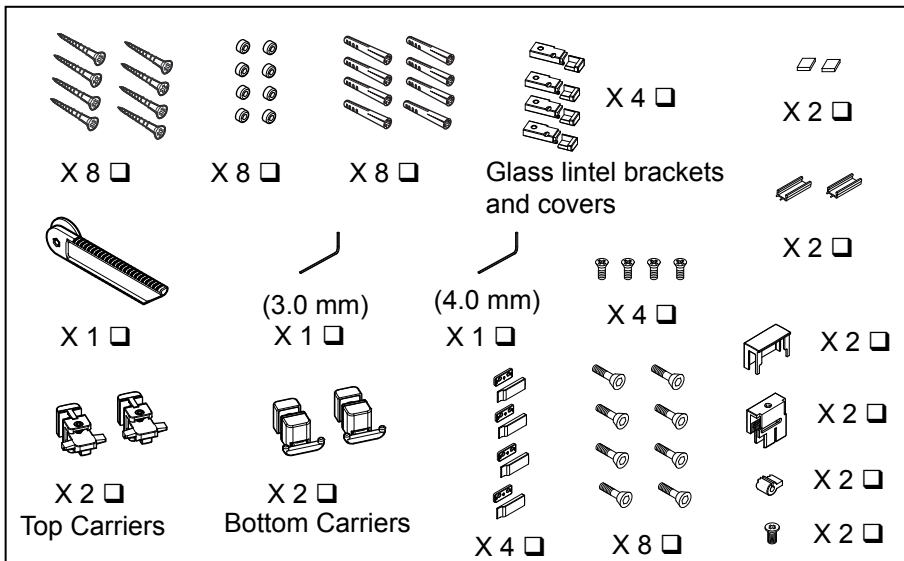
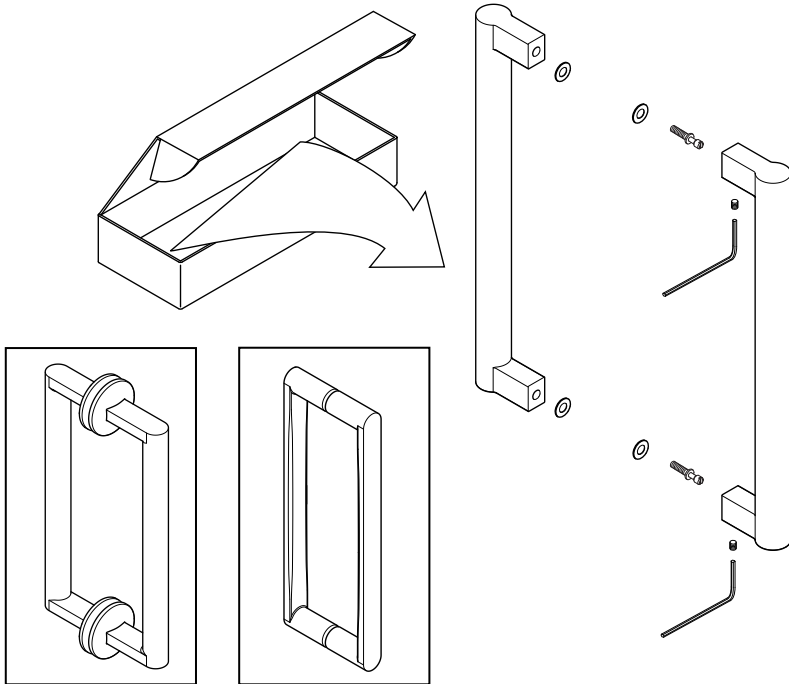
# Recommended Usage

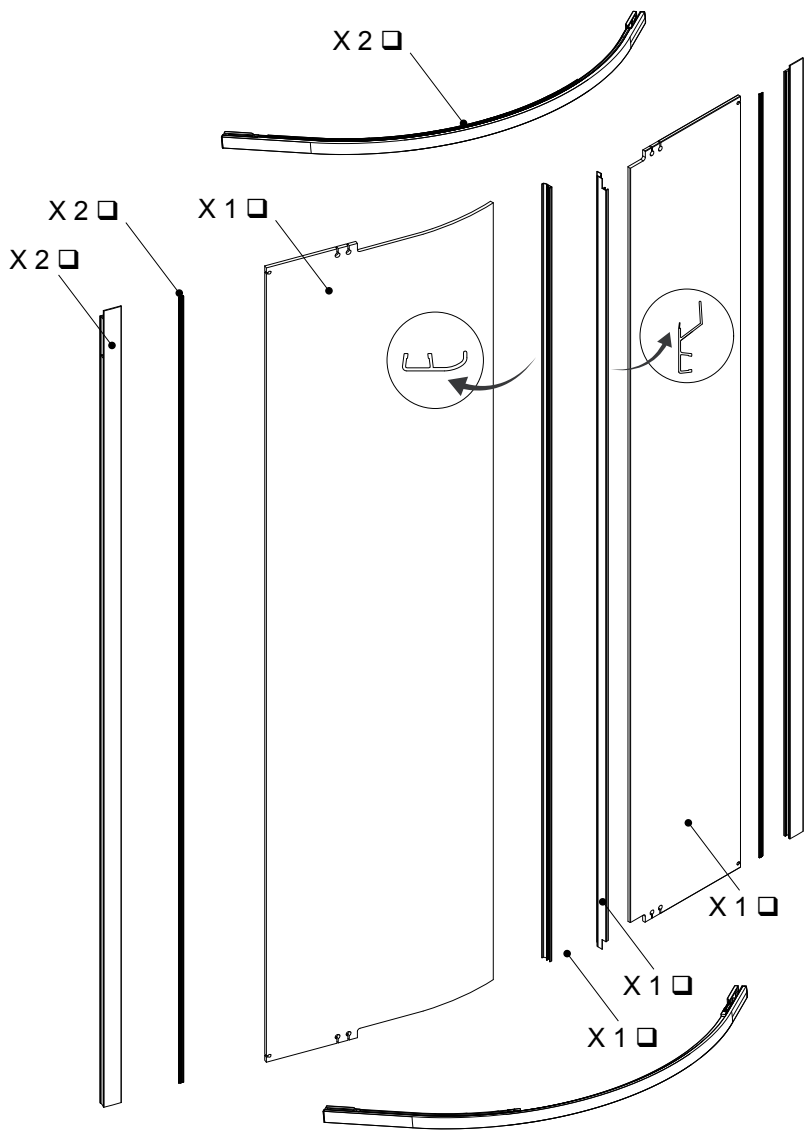
Domestic	✓
Light Commercial	✓
Heavy Commercial	✗
Healthcare	✗

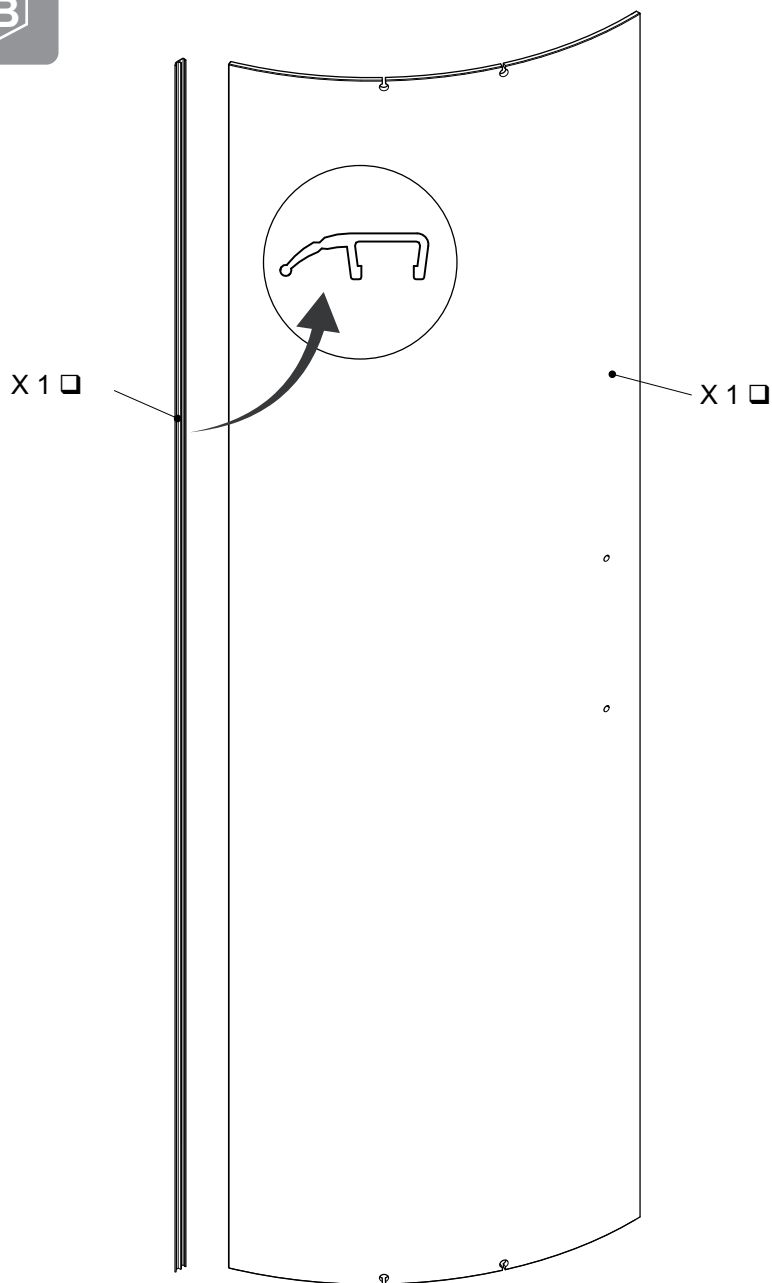
# Tools Required



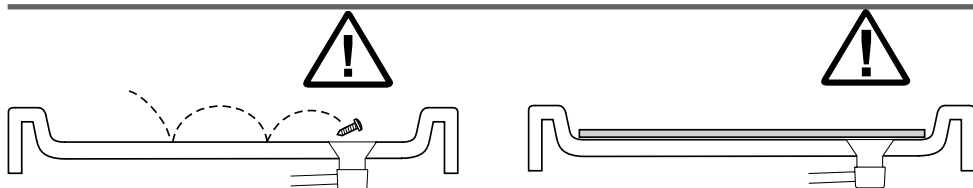
# Pack Contents







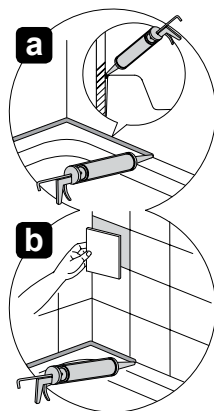
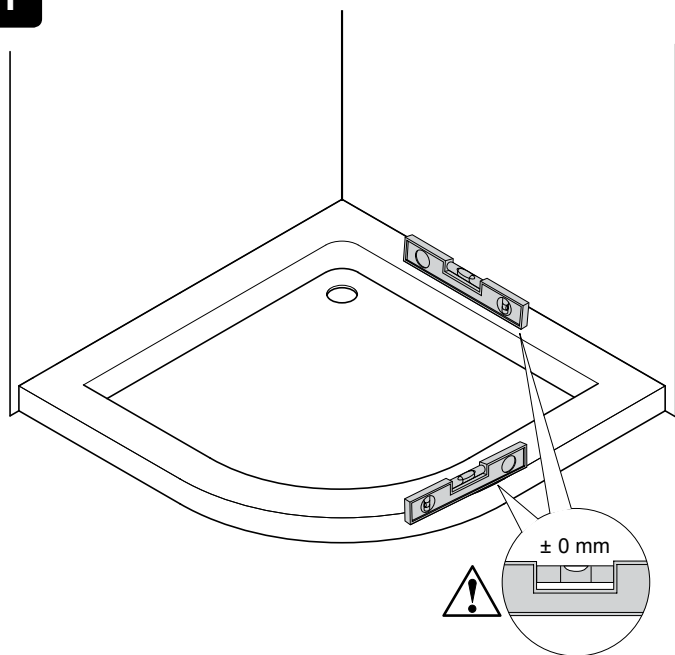
# Installation



**Note!** Cover the tray waste to prevent the loss of small parts.

**Note!** Protect the tray surface during enclosure installation.

1

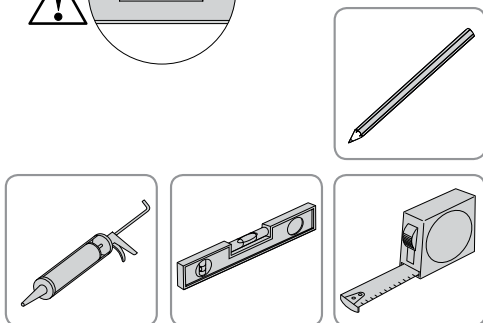


## Note!

Make sure that the walls have been tiled down to the tray.

Make sure the Tray is leveled.

Make sure the walls are flat and square.



(a) Install the shower tray in accordance with the manufacturer's instructions.

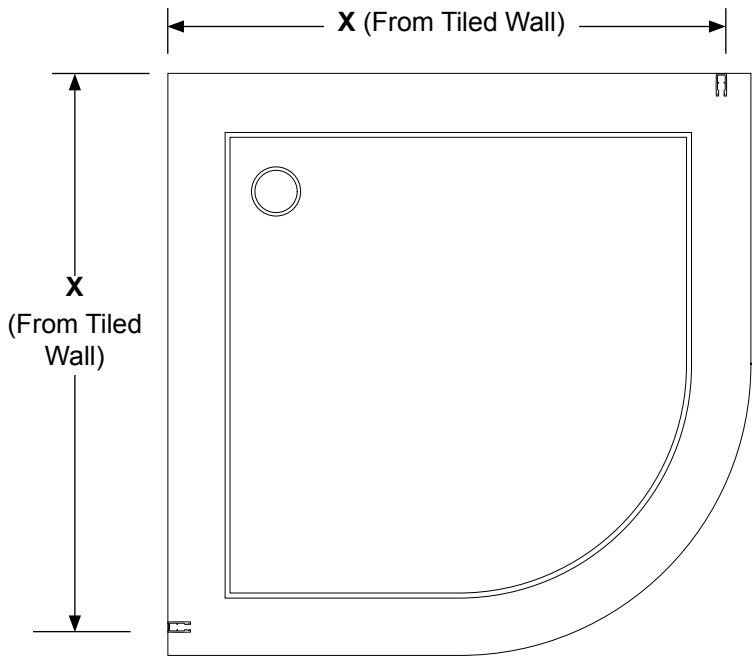
**Caution!** Make sure that the shower tray is level in all directions and that the walls are vertical and square.



# Adjustment Dimensions

Min/Max Frame Adjustment	Enclosure Size	Minimum X (mm)	Maximum X (mm)
20	900 x 900	870 870	890 890
20	1000 x 800	970 770	990 790
20	1000 x 1000	970 970	990 990
20	1200 x 900	1170 870	1190 890

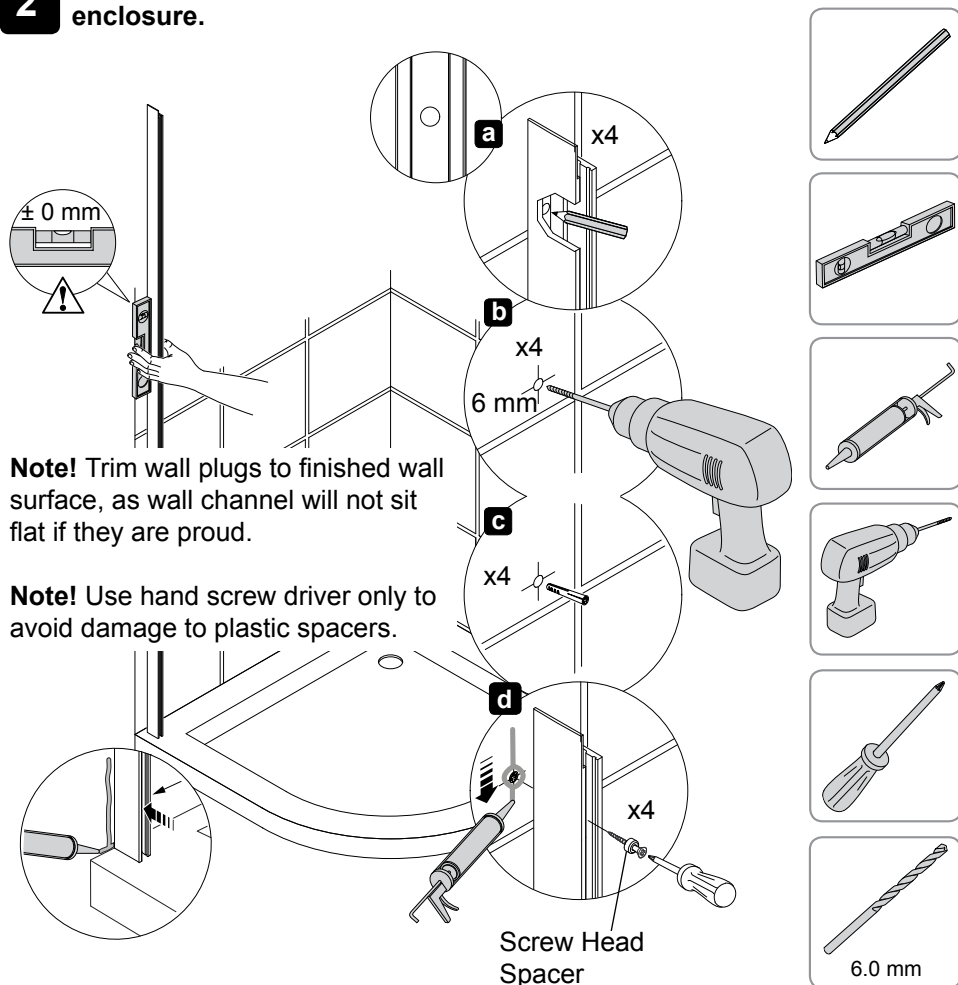
**Note!** All dimensions shown are in mm.



Door Configuration Table <b>(ALWAYS AS BELOW)</b>	
900 X 900	Opens towards curved (larger) panel
1000 X 1000	Opens towards curved (larger) panel
1000 X 800	Opens towards curved (larger) panel
1200 X 900	Opens towards curved (shorter) panel

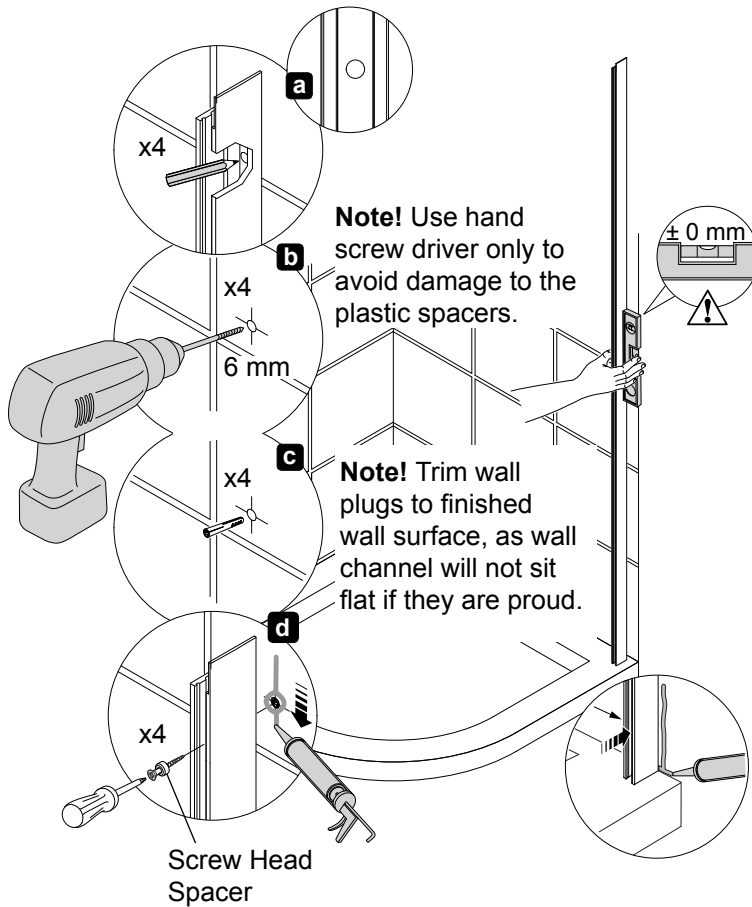
**2**

**Note! Ensure longer face of wall channel is on the outside of the enclosure.**



**3**

**Note! Ensure longer face of the wall channel is on outside of the enclosure.**



- (a) Position the second wall channel on the wall using the dimensions supplied in the above table on page 10 for correct enclosure size. Using a spirit level make sure that it is upright.
- (b) Mark the position of the fixing holes, then remove the wall channel.
- (c) Drill with a 6 mm masonry bit (not supplied) and plug using the wall plugs (supplied).
- (d) Position the wall channel on the wall and partially install the fixing screws.
- (e) Apply silicone sealant according to the manufacturers instructions along the length of the wall and at the bottom of the wall channel.
- (f) Ensure spacers are on the screws. Fully tighten the fixing screws, making sure that the wall channel is upright.

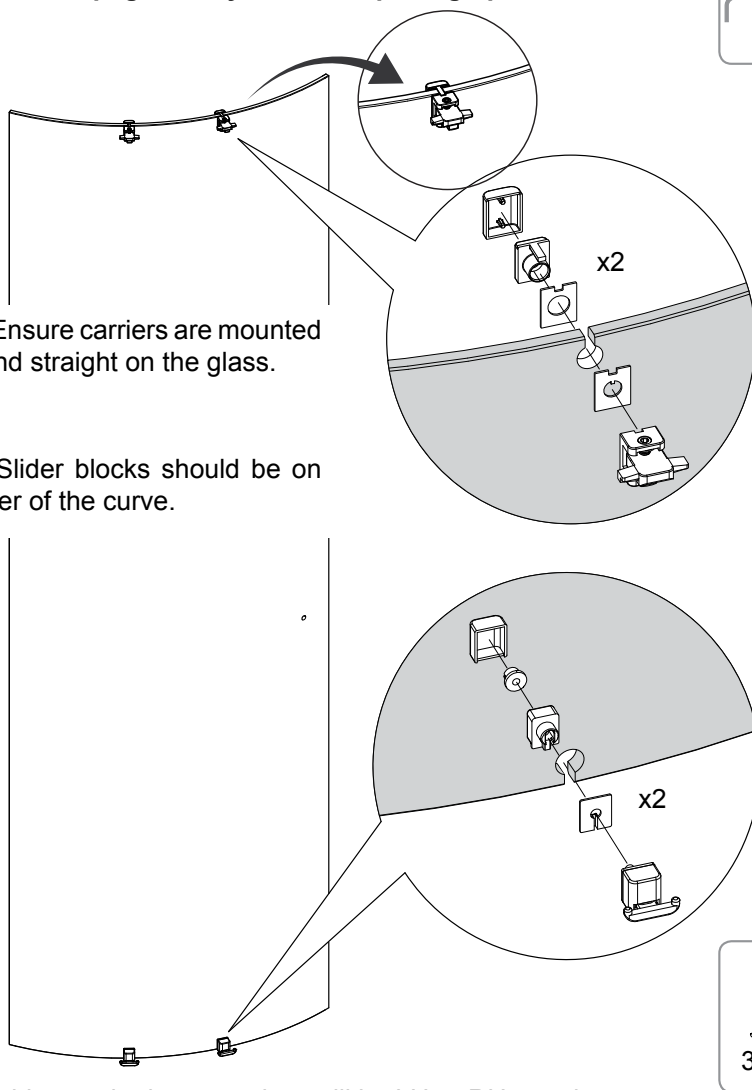
**4**

**Note!** The door on the enclosure is reversible and can be altered to suit your configuration. See the door opening table on page 9 for your door opening options

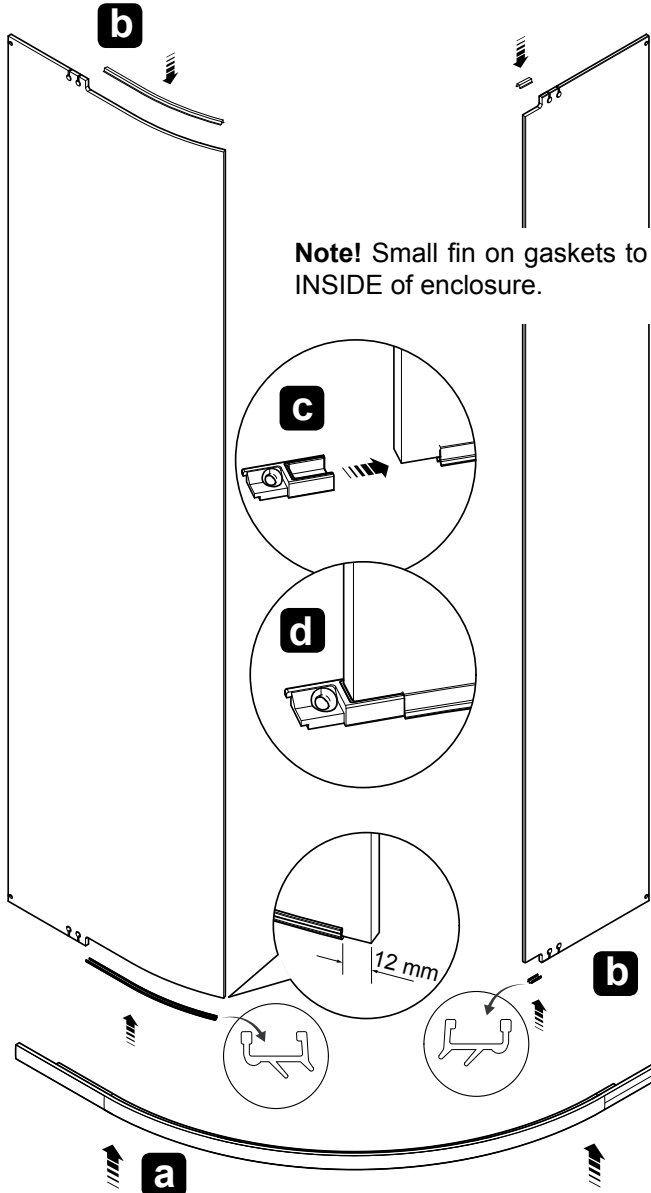


**Note!** Ensure carriers are mounted level and straight on the glass.

**Note!** Slider blocks should be on the outer of the curve.



- (a) Decide on whether your door will be LH or RH opening.
- (b) Install the top and bottom carriers as shown in the above diagram.(pre assembled in parts pack)
- (c) Install the bottom carriers loosely on door.
- (d) Install the covers onto all the carriers.
- (e) To aid assembly later, place the assembled door inside the enclosure / tray area (lean carefully against wall).

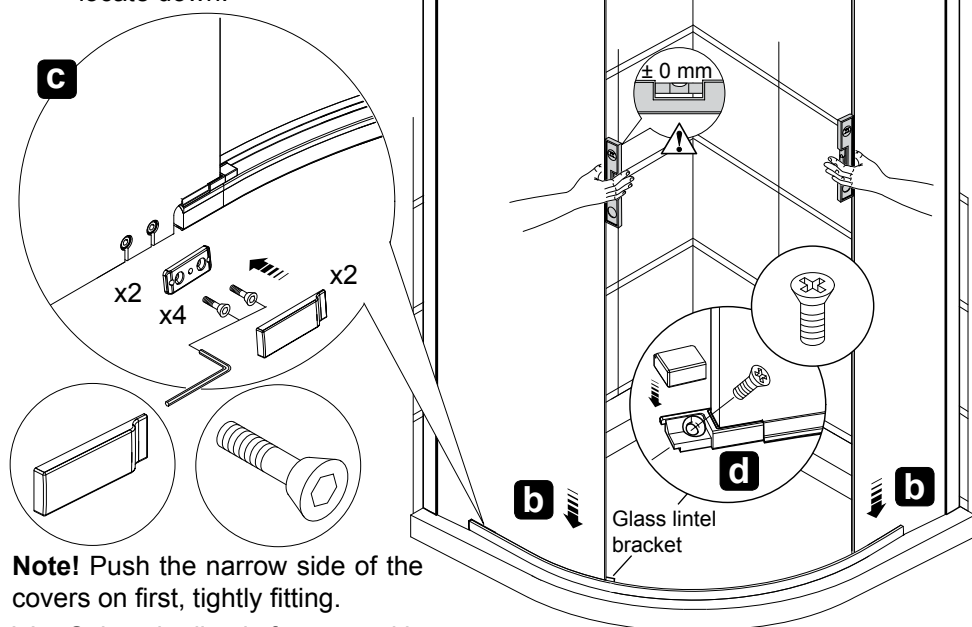
**5****Prepare the fixed panels for installation, fitting the panel gaskets.**

- (a) Use the glass lintel bracket as a guide, place at the end of the glass panel, as illustrated.
- (b) Push gaskets onto the glass and up to glass lintel bracket to get your measurement. (12 mm as shown)
- (c) Remove glass lintel bracket for later use.

**6**

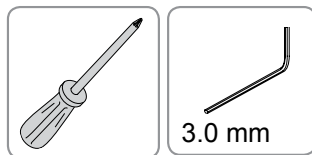
**Note!** Be careful not to lose the lollipop down the wall channel.

**Note!** The lollipop must sit within the thickness of the glass, pushing it too far in will result in the top bracket not being able to locate down.

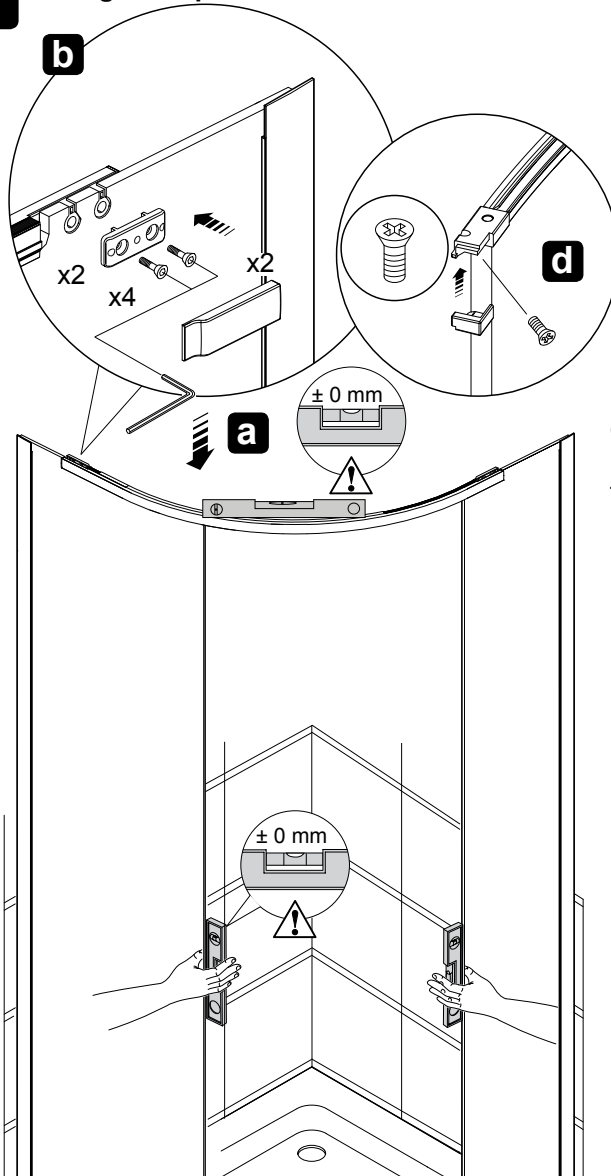


**Note!** Push the narrow side of the covers on first, tightly fitting.

- (a) Select the lintels for top and bottom as per your glass configuration.
- (b) Place the opening and closing glass panels into the wall channel while positioning on the bottom lintel with cutouts on glass.
- (c) Place the back plates on the internal side of glass on both panels and tighten the two screws on each side.
- (d) Screw the 2 glass lintel brackets into place onto the bottom lintel.
- (e) Make sure proper alignment of the two glass panels and the bottom rail along the tray.
- (f) Make sure that glass panels are set inside L shape bracket.
- (g) Insert the glass lollipop spacers (1) with serrations facing inside unit.
- (h) Place retaining block (2) over the glass.
- (i) Fit the screws (3). (j) Fit the cover (4).

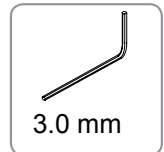
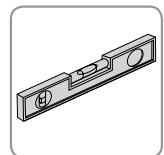


## 7 Fitting the top lintel



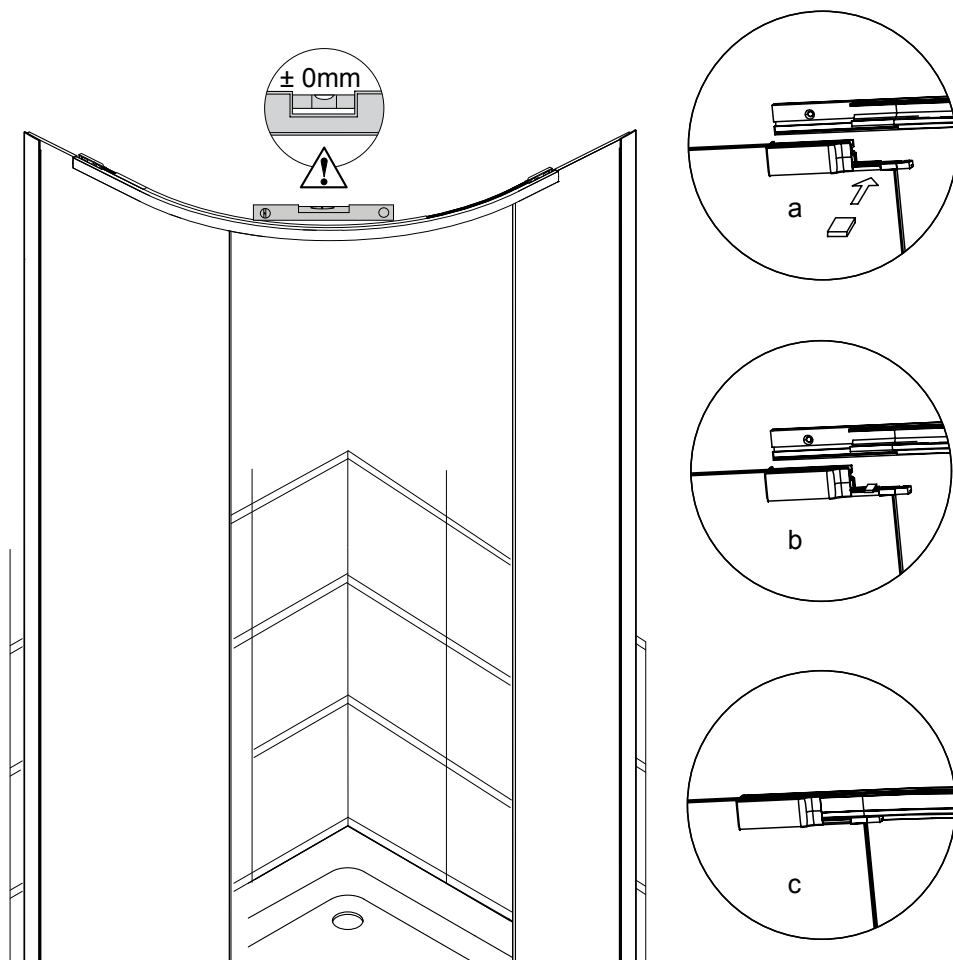
**Note!** Should your top lintel not be level, you can use the packers (supplied). See next page for details.

- (a) Position the top lintel with the cutouts on the glass.
- (b) Place the back plates on the internal side of glass on both panels and tighten the two screws on each side.
- (c) Using a spirit level make sure that both glass panels are upright and the top lintel is level.
- (d) Screw the two glass lintel brackets into place onto the top lintel.



## Support packers for top lintel level

After positioning the top lintel with the cutouts on the glass, you need to ensure the level before fully tightening the two screws on each side. The support packers are an option to get the lintel fully level. Please follow steps below to install the support packers.

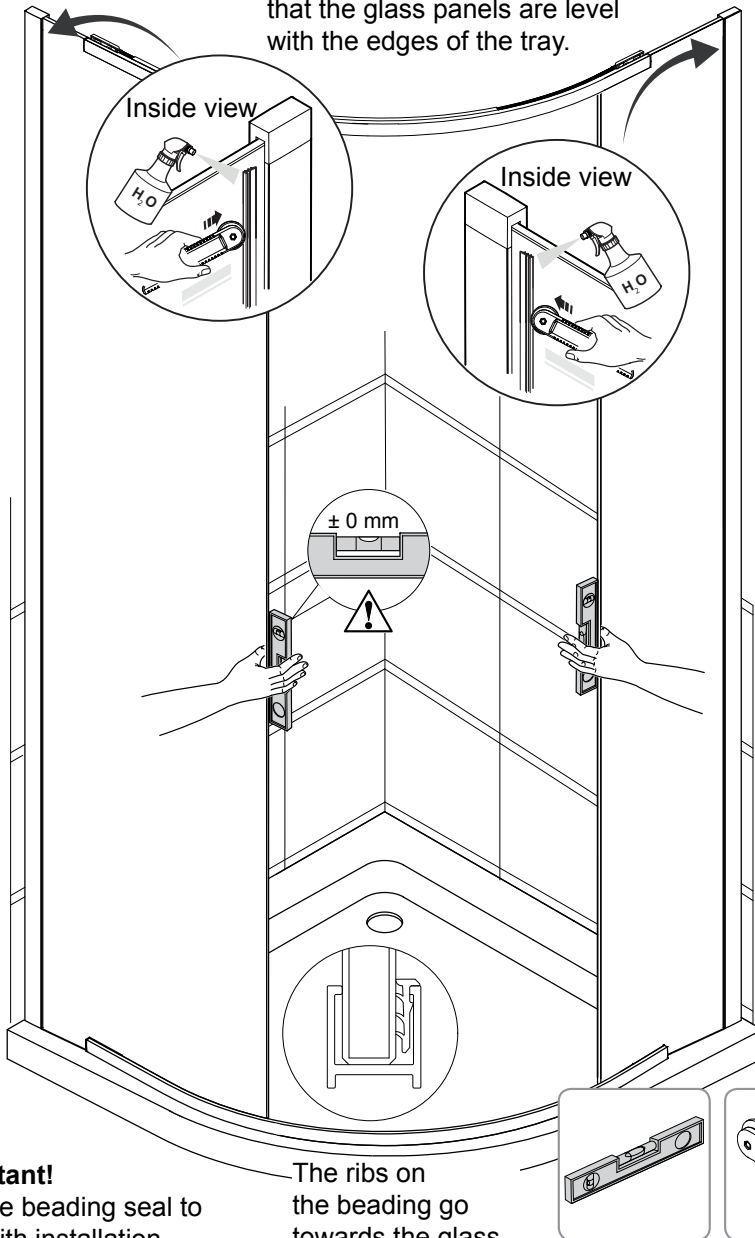


- (a) Loosen the screws and pull up the top lintel.
- (b) Locate the support packer onto the gasket.
- (c) Pull back the top lintel and measure the level.



8

**Note!** Prior to beading, ensure that the glass panels are level with the edges of the tray.

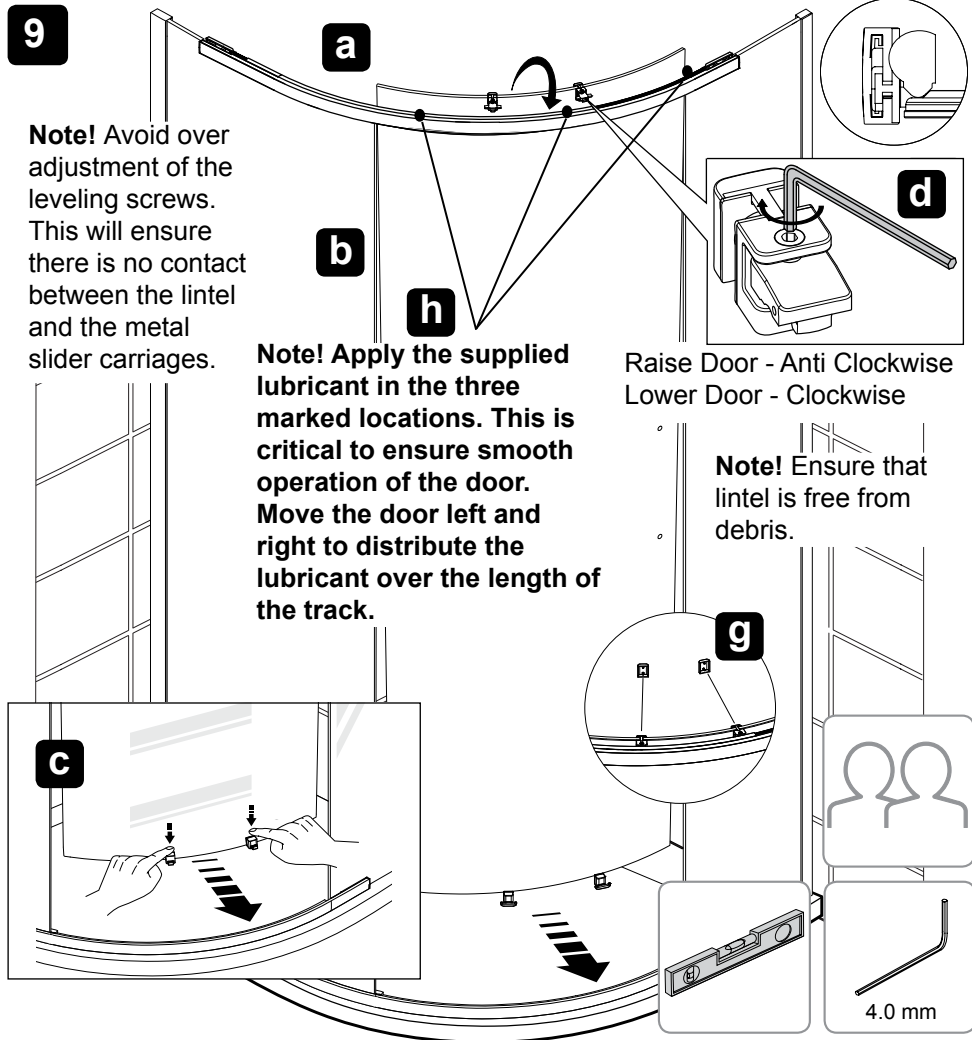


**Important!**

Wet the beading seal to help with installation.

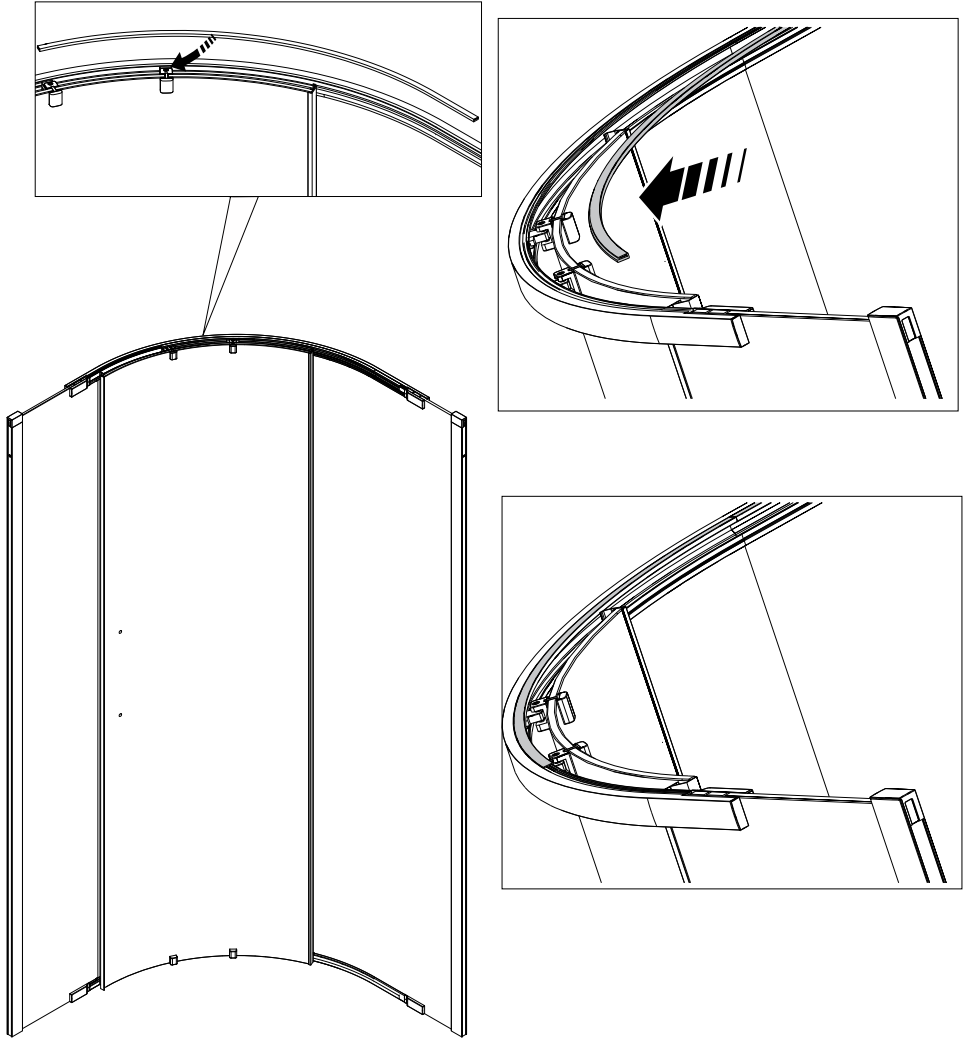
The ribs on the beading go towards the glass.

- (a) Push in the beading seals using the roller provided for both channels on the inside of the enclosure, starting at the bottom and working upwards.
- (b) Make sure that both the glass panels are level and equal about the tray.



- (a) Turn the sliding door (pre-installed with carriers) so it is in the correct orientation. As determined in step 4.
- (b) Mount the sliding door onto the top lintel.
- (c) Carefully push the bottom door carriers into the bottom lintel, pressing down on the carriers as required.
- (d) Adjust the door level by rotating the adjustment screws on top of the door. Clockwise = Lower Door. Anti-clockwise = Raise Door.
- (e) The bottom carriers can be adjusted individually. If required loosen the bolts and move the carriers up or down on the glass, when the desired position is achieved re-tighten the bolts.
- (f) Once all adjustments have been made, ensure the door edges are vertical.

- (g) Fit carrier covers.
- (h) Apply the supplied lubricant within the trackway of the lintel at the 3 spots detailed above. Move the door left and right to distribute the lubricant.

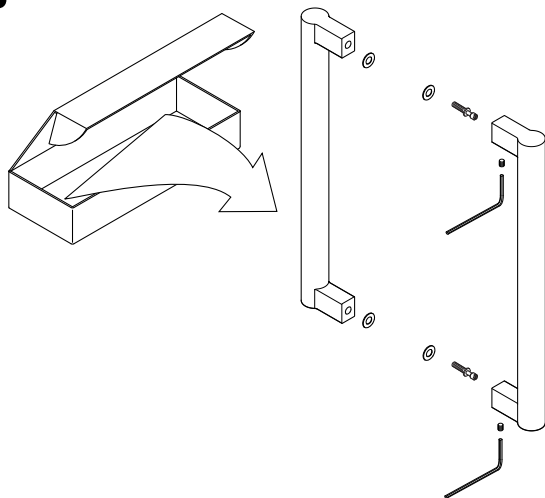
**10****Anti Jump Strip****VIEW FROM INSIDE OF ENCLOSURE**

- (a) Fit anti jump strip on the top lintel.

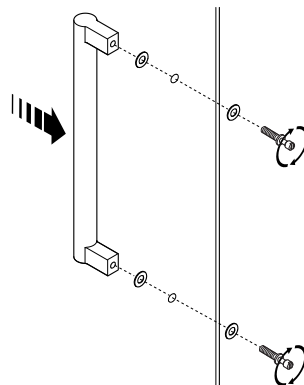
# 11 Handle Installation

**Note!** Handle installations are the same for all the handle options.

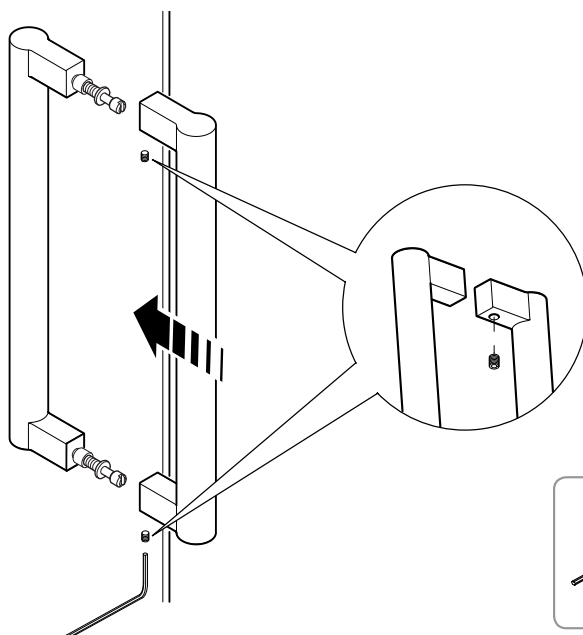
**a**

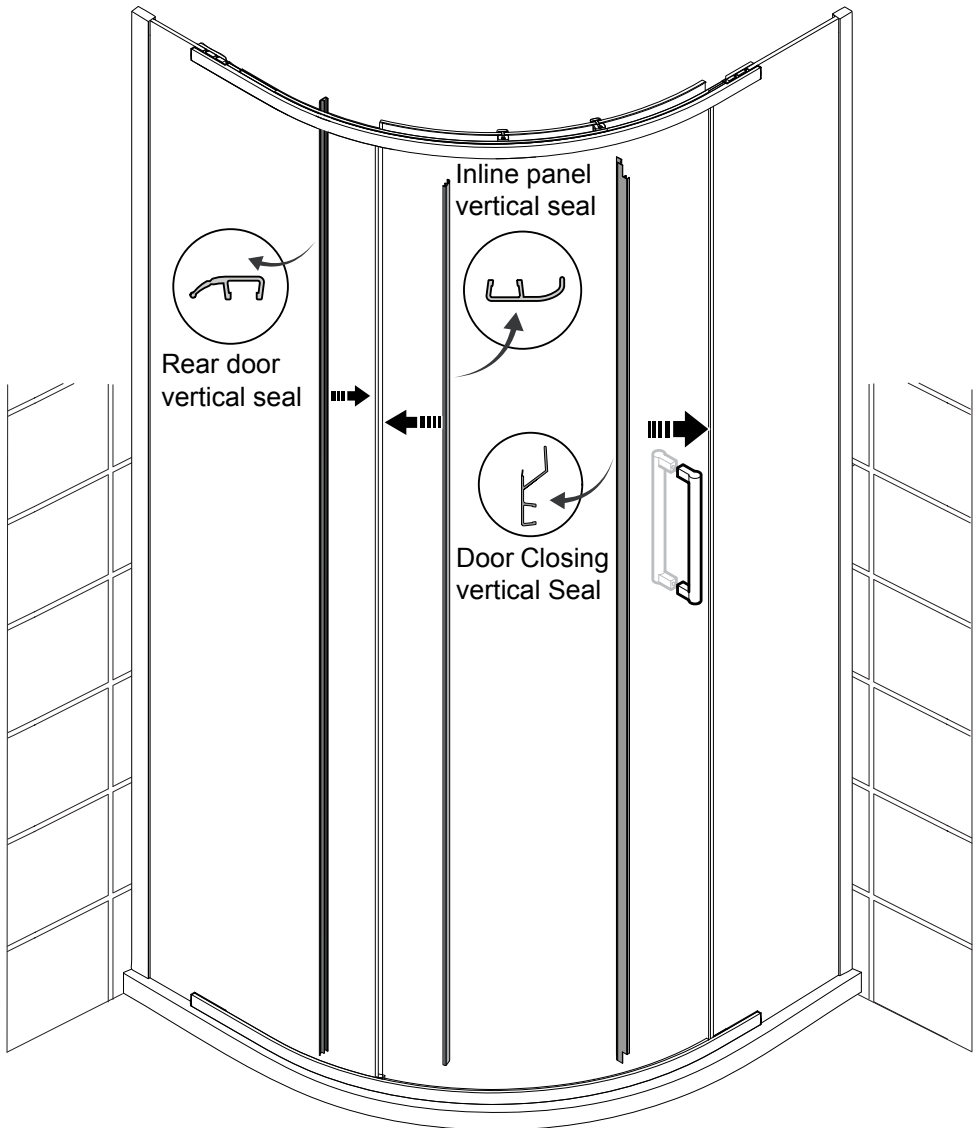


**b**

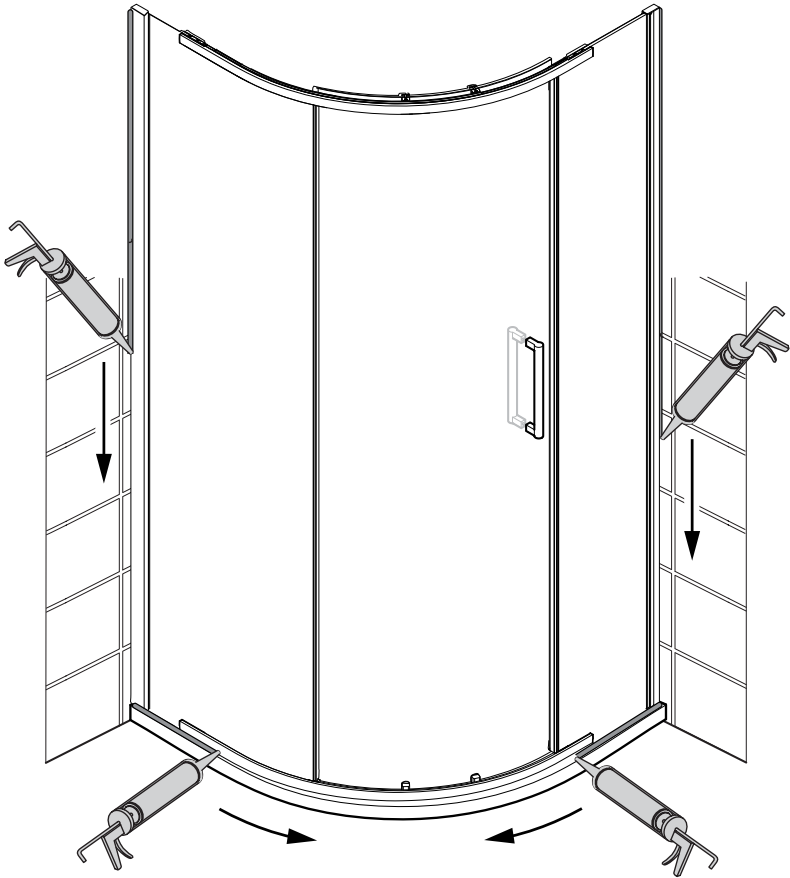


**c**



**12**

**(a)** Fit the 3 vertical seals as shown above.



**24hrs**



- (a) Apply sealant in accordance with the sealant manufacturers instructions along the outside surfaces of the door frame only.
- (b) Allow the silicone sealant to cure for 24 hours before use.

# Maintenance

## General Maintenance

Providing the shower enclosure has been correctly installed and is operated in accordance with the instructions contained in this guide, difficulties should not arise. If any maintenance is required then it must be carried out by a competent tradesperson to whom the maintenance instructions are provided.

Before replacing any parts ensure the underlying cause of the malfunction has been resolved.

If the door becomes difficult to slide, then apply more lubrication.

## Cleaning

**Warning!** The use of grout/tile cleaners, scale removers, abrasive scourers, drain unblockers and other powerful detergents may lead to damage of metallic, plated and plastic surfaces, including the tray and shower waste.

Avoid the use of 'spray and leave' cleaners. Any cleaner used should have a pH level between 4 and 8 and immediately wiped dry using a soft cloth.

## Care

To preserve the beauty of your shower enclosure for many years, please observe the following care instructions:

Rinse glass and frame with clear water after showering. Remove water droplets with a squeegee. **Do not rub dry!** To clean your shower hygienically and easily, we recommend the use of a biodegradable cleanser.

Regular cleansing with a biodegradable cleanser prevents stubborn stains and ensures a clean and hygienic surface for many years. Do not use scouring or caustic cleansers under any circumstances! These can damage the surface of the frame, glass and decorative parts as well as the plastic parts.

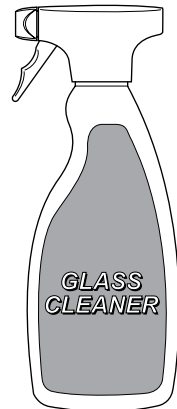
## Chrome Parts

Use only cleansers expressly specified for chrome!

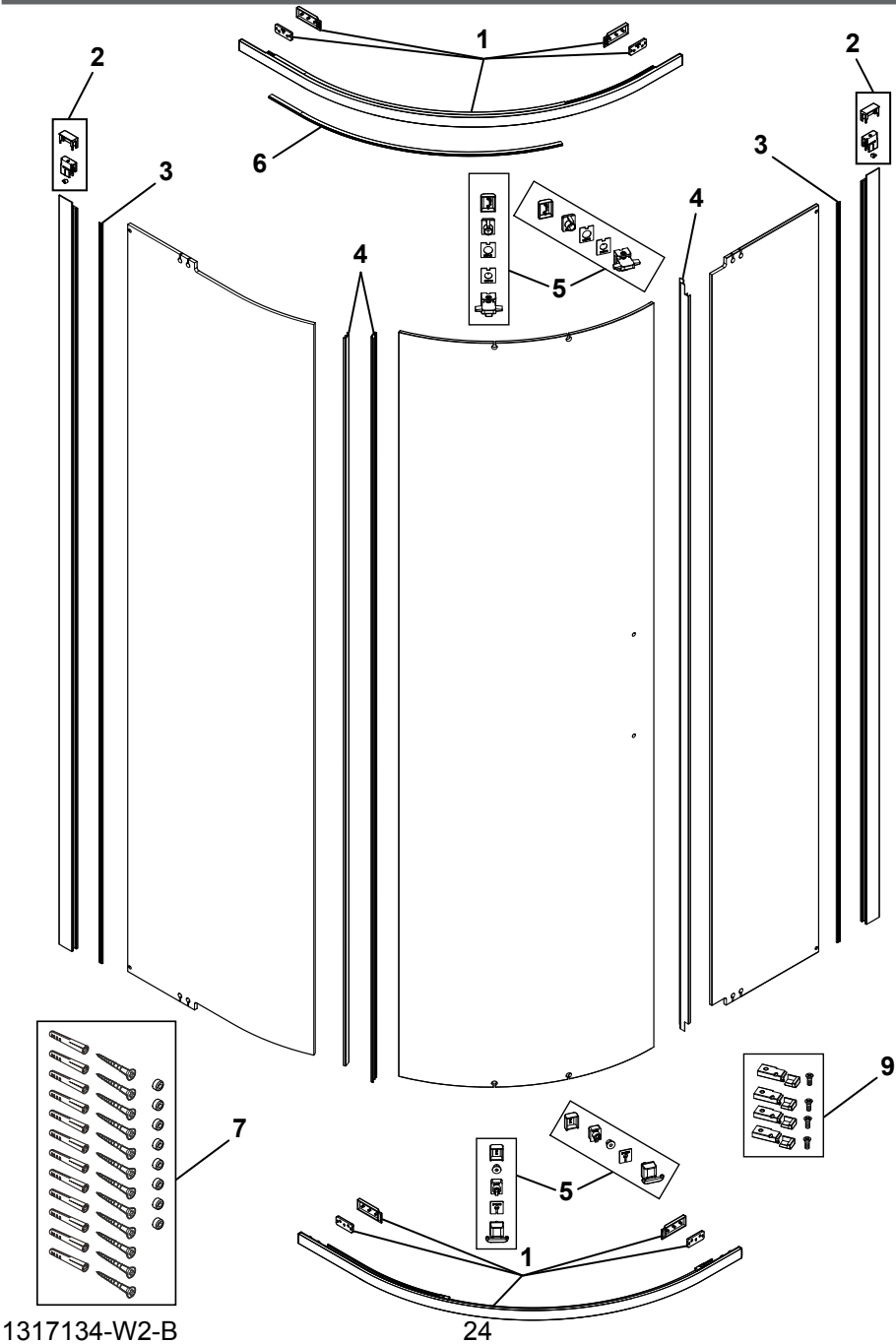
## KOHLER Glass Cleaner

For occasional cleaning of glass treated with KOHLER Glass Protector or for more regular maintenance of untreated surfaces, we recommend using KOHLER Glass Cleaner.

The cleaner cleans and polishes without smearing or streaking and rejuvenates the Glass Protector.



# Spare Parts





# Part Numbers

---

1	4.1922.094	Spare Quad Lintel Pack - Pair
2	4.1922.079	Spare Slider Enclosure Parts Pack
3	4.1922.057	Spare Glazing Bead Pack
4	4.1922.096	Spare Quad Seal Pack
5	4.1922.095	Spare Quad Carriers Pack
6	4.1922.099	Spare Quad Anti Jump
7	4.1922.141	Spare Fixing Pack
8	4.1922.108	Spare Lubrication
9	4.1922.144	Spare Glass Lintel Brackets, Screws and Covers. (x4 of each)

# Notes

---

# Declaration of Performance

**KOHLER.**

## DECLARATION OF PERFORMANCE

Kohler Mira Ltd.  
Cromwell Road  
Cheltenham  
Gloucestershire  
GL52 5EP  
United Kingdom

Tel: 0844 571 1155  
Fax: 0844 581 1100

[www.kohlermira.co.uk](http://www.kohlermira.co.uk)

**Brand name:** Kohler Mira

**Product name:** Ascend & Composed Shower Enclosures (all sizes)

**Product Range:**

Hinged Alcove Door	Wet Room Side Panel
Hinged Enclosure	Wet Room Panel
Sliding Alcove Door	Wet Room Hinged Return Panel
Sliding Door Enclosure	Bath Screen (In-line Panel with Hinged Door)
Side Panel	Quadrant Enclosure

**Product type:** Domestic Shower Enclosure

**Manufacturer:** Kohler Mira Ltd  
Cromwell Road, Cheltenham  
Gloucestershire GL52 5EP  
United Kingdom

**Directives:** EU 305/2011 Construction Products Regulations

**System of assessment:** System 4  
Type testing / Factory production Control

**Standards:** EN 14428:2015.  
Shower enclosures – Functional requirements and test methods.

Essential Characteristics	Performance	Harmonised technical specification
IR-CA-DA	Compliant	EN 14428:2015

The performance of the products described above, are in conformity with the relevant community harmonisation legislation.

This declaration of performance is issued under the sole responsibility of Kohler Mira Ltd.

Signed for and on behalf of Kohler Mira Ltd.

**Signature:**



**Name:** Jon Ramsdale  
**Place:** Cheltenham, UK  
**Doc. No.:** CE 0120

**Position:** NPD Director  
**Date:** 04<sup>th</sup> June 2018  
**Issue:** 1

**CE 18**

