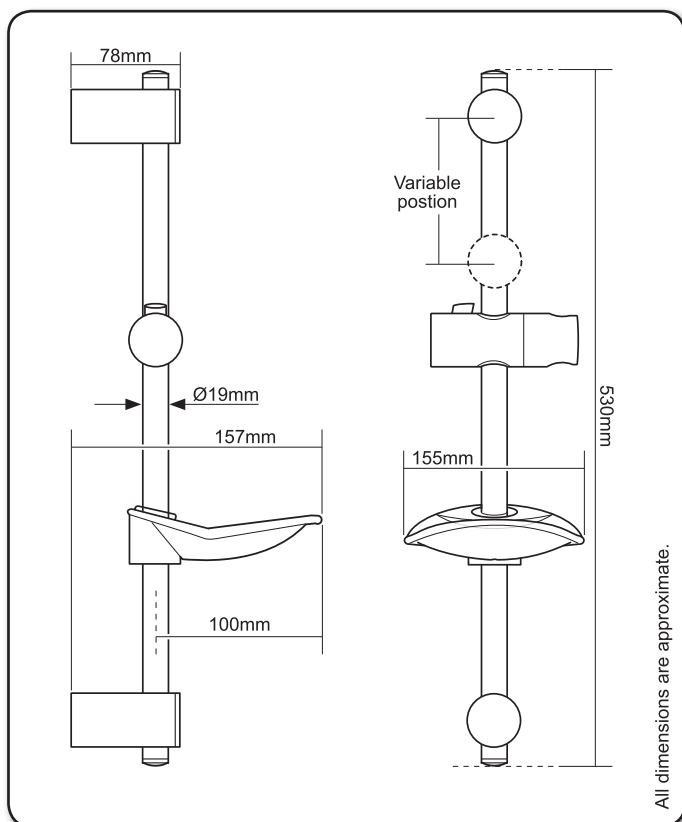


# **LEWIS**

## ***Riser rail assembly***

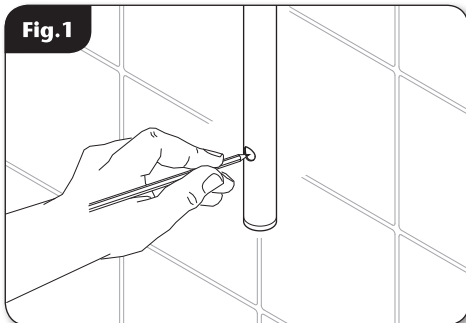


## **Installation Instructions**

INSTALLERS PLEASE NOTE THESE INSTRUCTIONS ARE TO BE LEFT WITH THE USER

## FITTING THE RISER RAIL ASSEMBLY

Fig.1



### FITTING THE RISER RAIL

#### ⚠ WARNING!

**Check there are no hidden cables or pipes before drilling holes for wall plugs. Use great care when using power tools near water. The use of a residual current device (RCD) is recommended.**

Fig.2

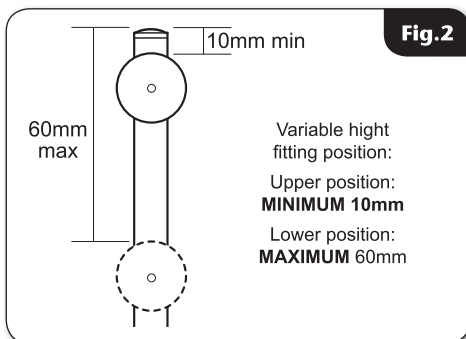
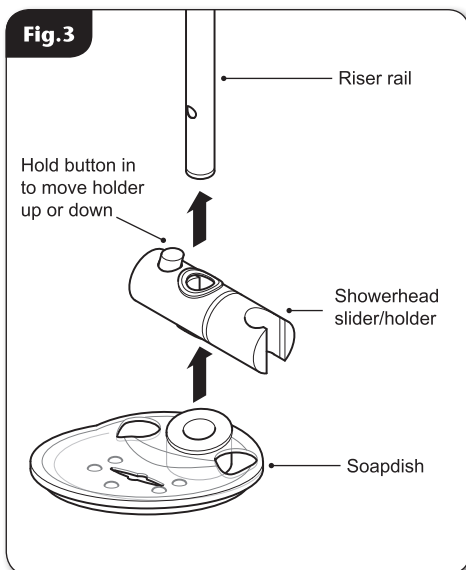


Fig.3



- Using the riser rail as a guide, decide the position of the top of the riser rail. Once determined, this will allow the bottom fixing bracket hole to be marked. The rail has two different size holes in it. The rail should be fitted with the larger hole facing out and at the bottom.
- Drill and plug the bottom hole. *(An appropriate drill bit should be used. If the wall is brick, plasterboard or a soft building block, appropriate wall plugs and screws should be fitted).*
- Making sure that the riser is vertical and that the top of the fixing bracket will be **no closer than 10mm** to the top of the riser rail, mark the position of the top fixing hole. The bracket may be fitted at a variable height. It is advised that the bracket is **NOT** fitted more than **60mm** from top of the riser rail (**fig.2**).
- Once the upper bracket hole has been drilled and plugged, the bracket may be fitted as the retaining screw will sit in behind the riser rail.
- Before the riser rail and bottom bracket can be fitted and secured to the wall, the following items need to be fitted in the order and orientation shown in (**fig.3**) - the slider/holder can be fitted with the showerhead on either the left or right of the riser rail. The soapdish has two in built hose retaining rings for left or right hose fitting.

## FITTING THE RISER RAIL ASSEMBLY

- Once all of the items are in place the riser rail can be inserted into the top and bottom brackets and the bottom bracket secured in place with the retaining screw (**fig.4**).
- Finally the top and bottom trims can be clicked into place.

*Should the need arise, the trim cover can be removed by inserting a screwdriver and very carefully levering it away from the bracket.*

## FITTING THE HOSE AND SHOWERHEAD\*

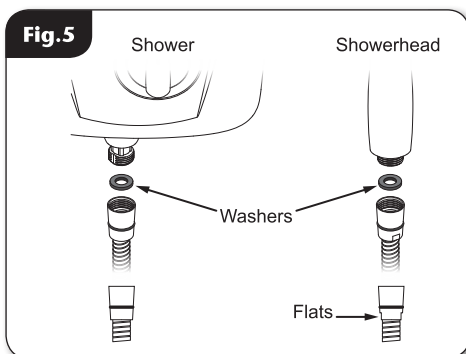
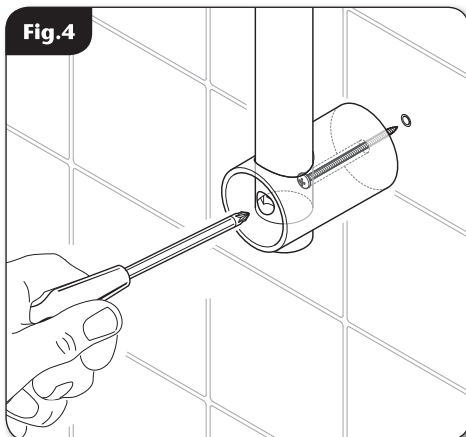
**NOTE:** The hose has two different ends. One end has two flats on it, this is the end that should be connected to the showerhead (**fig.5**).

- Feed the flexible hose through a hose retainer hole in the soapdish (The hose retainer **MUST** be used to comply with Water Regulations).

**NOTE:** The holder is slightly tapered and the showerhead and hose will only fit from the top.

**IMPORTANT:** It is the conical end of the hose which grips into the holder. The showerhead will not fit in the holder without the hose attached.

- Screw the flexible hose to the shower outlet and showerhead, making sure the supplied washers are in place at both ends of the flexible hose and the correct ends are fitted to the shower and showerhead (**fig.5**).
- Place the showerhead into the holder and check that it fits correctly.



\*Not supplied unless otherwise stated.

## SPARE PARTS

<b>Ref. Description</b>	<b>Part Number</b>
-------------------------	--------------------

- |                    |          |
|--------------------|----------|
| - Kit without rail |          |
| white .....        | 88900033 |
| chrome .....       | 88900034 |

- |                                   |          |
|-----------------------------------|----------|
| <b>1.</b> Brackets & trims (pair) |          |
| white .....                       | 83314660 |
| chrome .....                      | 83314670 |

- |                         |          |
|-------------------------|----------|
| <b>2.</b> Trim (single) |          |
| white .....             | 83314690 |
| chrome .....            | 83314700 |

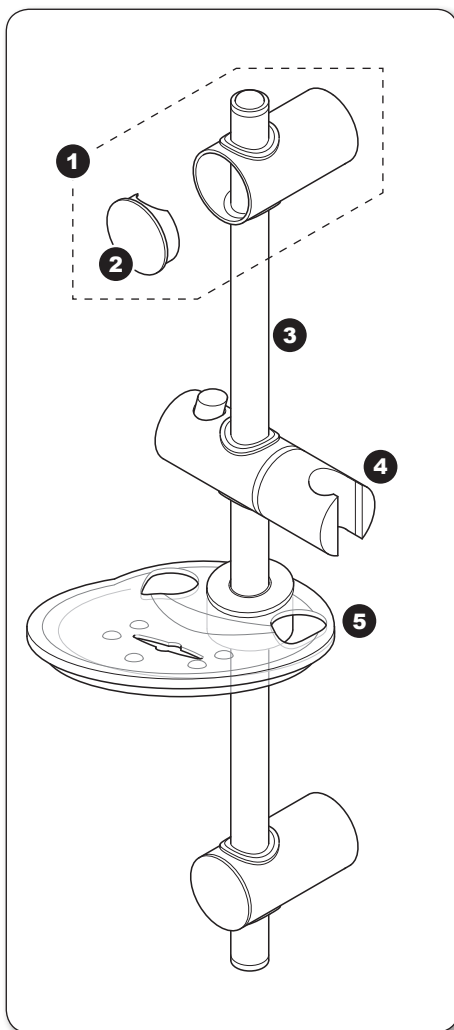
- |                            |          |
|----------------------------|----------|
| <b>3.</b> Riser rail 530mm |          |
| chrome .....               | 88800024 |

- |                                    |          |
|------------------------------------|----------|
| <b>4.</b> Showerhead holder/slider |          |
| white .....                        | 83314710 |
| chrome .....                       | 83314720 |

- |                                  |          |
|----------------------------------|----------|
| <b>5.</b> Soap dish (clear)..... | 83314730 |
|----------------------------------|----------|

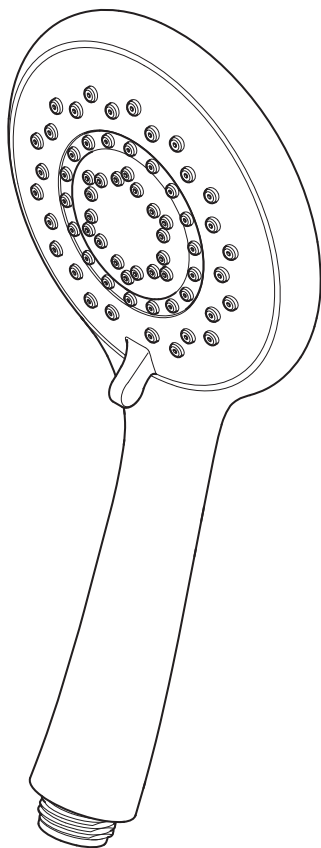
Flexible hoses available in the following sizes:

- 1.00m in white, chrome and gold
- 1.25m in white, chrome and gold
- 1.75m in chrome only

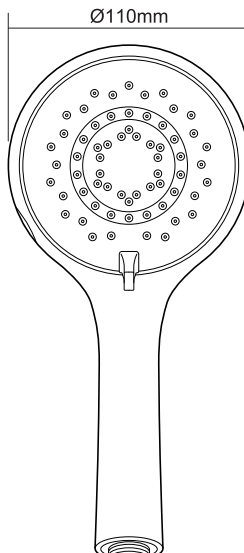
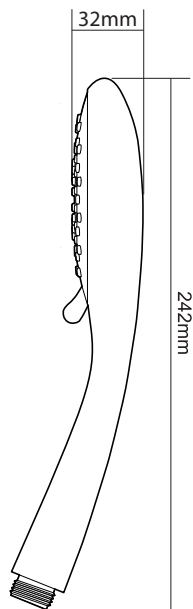


**Please refer to shower installation and operating instructions for service details.**

## **8000 Series Showerhead**

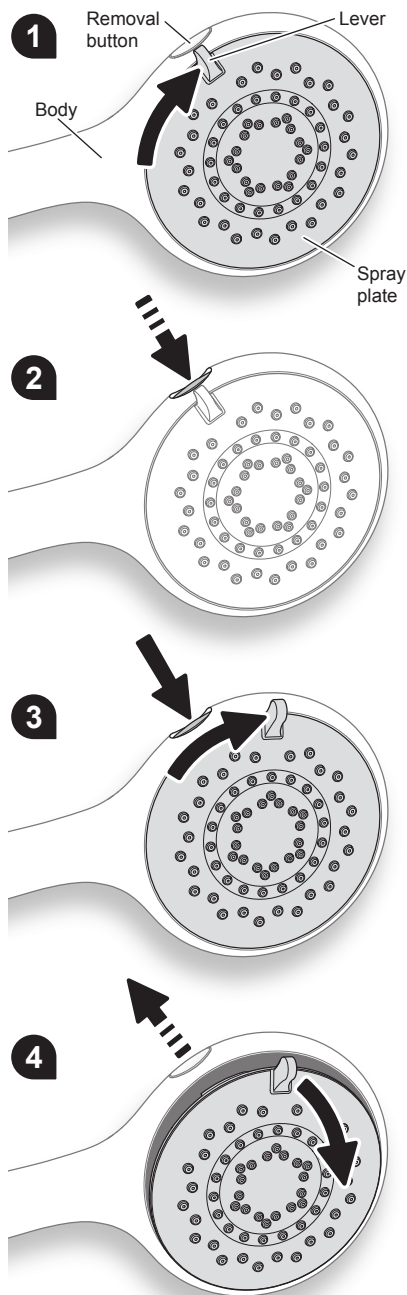


### **Maintenance Instructions**



INSTALLERS PLEASE NOTE THESE INSTRUCTIONS ARE TO BE LEFT WITH THE USER

## 8000 SERIES SHOWERHEAD



This instruction book covers the operation and cleaning of the showerhead.

### SHOWERHEAD SPRAY POSITIONS

Five showerhead patterns are available.

Adjust the spray pattern by turning the lever on the showerhead in either direction until the desired pattern is obtained. These positions are located at 4, 5, 6, 7 and 8 o'clock, when the showerhead is in the vertical position.

### REMOVING THE SPRAY PLATE

**IMPORTANT:** Before cleaning, turn off the unit at the mains supply to avoid the shower being accidentally switched on.

- 1 Rotate the spray plate clockwise until it reaches its 'stop' position facing the removal button.
- 2 Press and hold the removal button in.
- 3 With the removal button held in, rotate the face plate clockwise past the removal button until it stops.
- 4 Release the removal button and gently pull the face plate away from the body using the adjustment lever.



#### IMPORTANT

Should any difficulty arise when trying to remove the spray plate (image 4) **DO NOT** try to force it out of the body by hand, or by using tools such as a screwdriver. Reset the spray plate to the position shown in image 7 and repeat steps 1-4 as listed above.

**DO NOT** remove the inner plate (image 5). Removing this, **WILL** invalidate any product warranty.

## 8000 SERIES SHOWERHEAD

### CLEANING

Triton recommends that all products are cleaned using warm, soapy water.

**DO NOT** use abrasive or aggressive chemical cleaning products as this may affect the product surface and finish and invalidate your guarantee.

**NOTE:** *The showerhead can be cleaned quickly by simply rubbing your fingers over the spray plate.*

IT IS IMPORTANT TO KEEP THE SHOWERHEAD CLEAN TO MAINTAIN THE PERFORMANCE OF THE SHOWER. The hardness of the water will determine the frequency of cleaning. For example, if the shower is used every day in a very hard water area, it may be necessary to clean the showerhead on a weekly basis.

### REPLACING THE SPRAY PLATE

**5** The spray plate and face plate **MUST** be aligned correctly for reinstallation. To align them correctly, please do the following:

**a** Ensure that the inner plate is turned fully clockwise until it stops. The alignment arrow position is approximately 9 o'clock, when the showerhead is in the vertical position.

**b** The lever **MUST** then be matched up with the arrows position to reinstall the spray plate correctly.

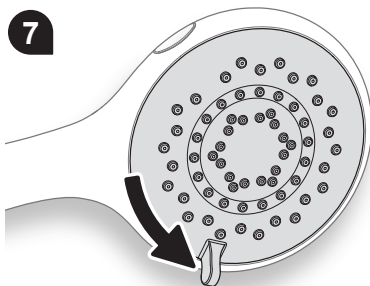
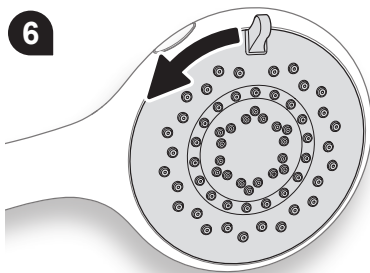
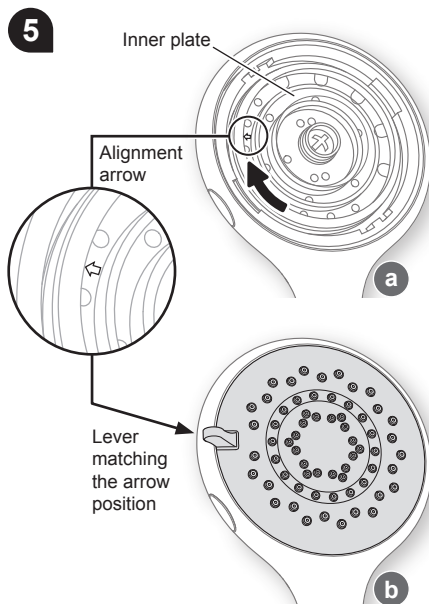
Should any difficulty arise when trying to refit the spray plate **DO NOT** try to force it back into position. Please make sure the arrow and lever positions are correct.

Once in place, the spray plate face should be gently pressed until its edges sit flush with the body.

**6** Now installed into the body, start to turn the spray plate anti-clockwise.

**7** To lock the plate back into the mechanism, the spray plate **MUST** be rotated fully anti-clockwise until it stops.

**IMPORTANT:** *The showerhead should be directed towards waste, and the shower switched on to ensure the spray plate is locked into the mechanism before use.*



**SPARE PARTS**

<i>Ref.</i>	<i>Description</i>	<i>Part number</i>
-------------	--------------------	--------------------

**1. 5 mode rub clean showerheads**

**SHOWER HEADS**

*(mixer showers only)*

88500060	.....WHITE MIXER
88500061	.....CHROME MIXER
88500068	.....SATIN MIXER

*(electric showers only)*

88500062	.....INCLUSIVE WHT
88500069	.....ELEC SATIN
88500070	.....INCLUSIVE CHROME
88500074	.....ELEC WHITE
88500075	.....ELEC CHROME

**2. Flow Regulator**

**FLOW REGULATORS**

22011740	.....4 L/MIN
22011750	.....5 L/MIN
22011760	.....6 L/MIN
22011610	.....7 L/MIN
22011280	.....8 L/MIN

