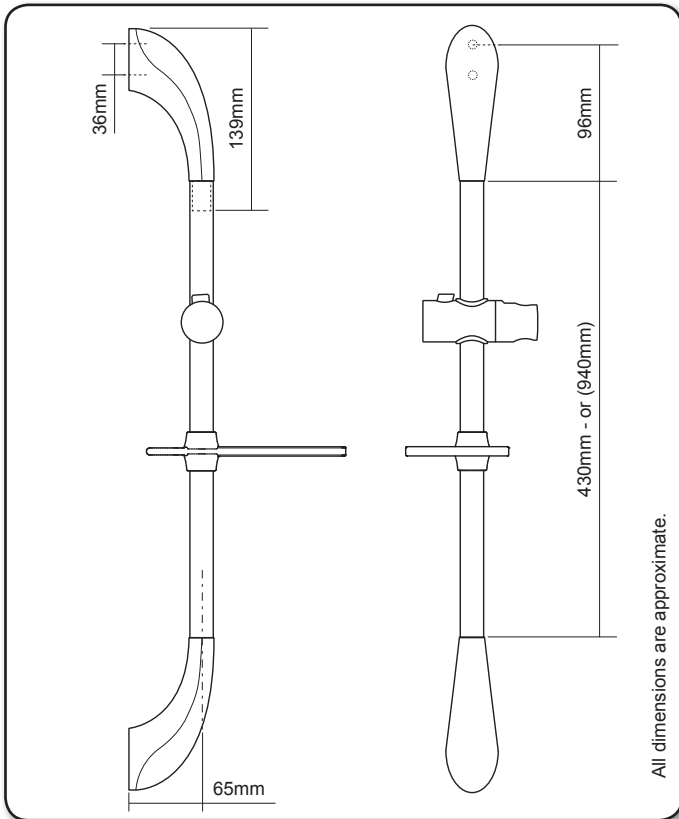


88900024
WHITE

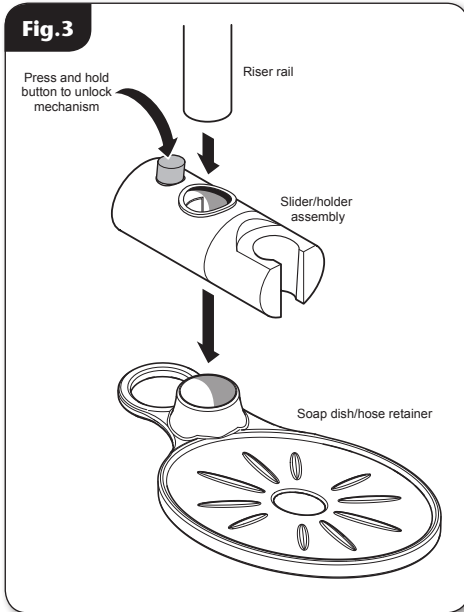
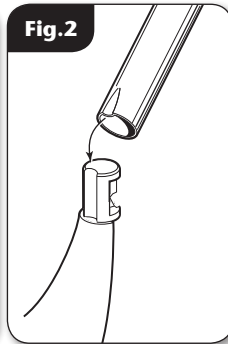
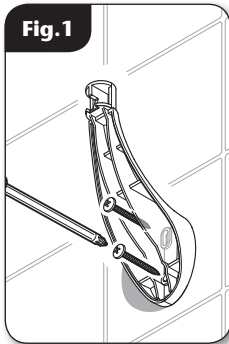
JOSHUA ***Riser rail*** ***assembly***



Installation Instructions

INSTALLERS PLEASE NOTE THESE INSTRUCTIONS ARE TO BE LEFT WITH THE USER

FITTING THE RISER RAIL ASSEMBLY



FITTING THE RISER RAIL

WARNING!

Check there are no hidden cables or pipes before drilling holes for wall plugs. Use great care when using power tools near water. The use of a residual current device (RCD) is recommended.

Decide on the position for the rail on the wall within the shower area. Proceed as follows:

- Offer one of the brackets to the wall for the lower position only. Note there are three holes in the brackets but two screws will usually be enough. Mark the centre hole and one of the other two.
- Drill and plug the wall. (*An appropriate drill bit should be used. If the wall is brick, plasterboard or a soft building block, appropriate wall plugs and screws should be fitted.*)
- Replace the bracket to the wall and secure **(fig. 1)**.
- Locate the rail onto this lower bracket, making sure the rail engages fully on the bracket. Check that the indent in the riser rail engages into the cut-out on the bracket end **(fig. 2)**.
- Locate the second bracket on top of the rail. Check the rail is vertical then mark the centre hole and of the other two holes. Remove the bracket and rail. Drill and plug the wall.
- Fit the slider/holder assembly and the soap dish onto the riser rail. The slider can be fitted with the showerhead on either the left or right of the riser rail and the soap dish can be fitted either way up **(fig. 3)**.

FITTING THE RISER RAIL ASSEMBLY

- Place the rail onto the installed lower bracket. Replace the upper bracket onto the rail and secure the bracket to the wall with the screws supplied (**fig.4**).
- Place a trim cover onto each bracket. Make sure the large tab at the narrow end of the trim cover fits into the slot between the rail and bracket (**fig.5**) before pushing and clicking the other end into place.

Should the need arise, the trim covers can be removed by inserting a screwdriver into the slot and carefully levering off the trim.

FITTING THE HOSE AND SHOWERHEAD

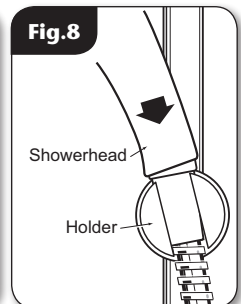
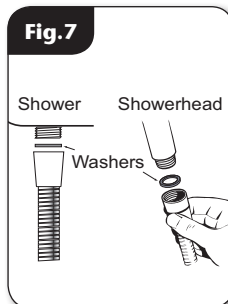
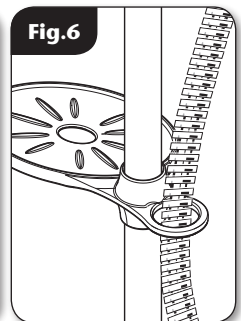
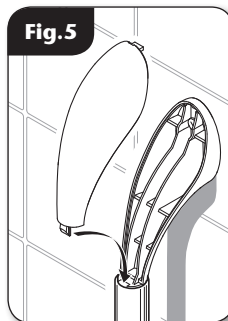
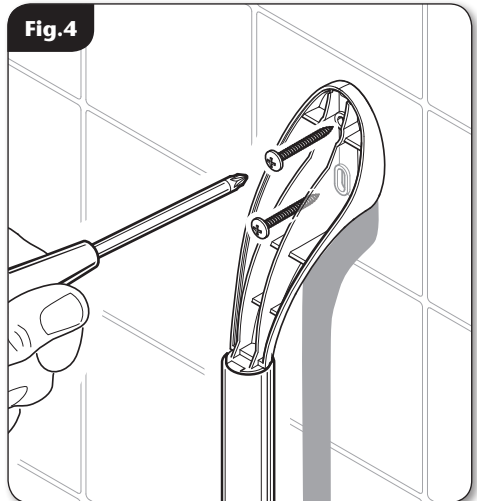
- Feed the flexible hose through the appropriate soap dish opening (**fig.6**) so that the dish acts as a retaining ring (Water Regulations).

Note: *The holder is slightly tapered and the showerhead and hose will only fit from one direction.*

- Screw the flexible hose onto the shower outlet and showerhead (**fig.7**), making sure the supplied washers are in place at both ends of the flexible hose.
- Place the showerhead into the holder (**fig.8**) and check that it fits correctly.

IMPORTANT: This riser rail assembly is supplied with a hose retainer. Water Regulations require the fitting of a double check valve or similar device in the supply pipework to prevent backflow if the retainer is not used.

IMPORTANT: It is the conical end of the hose which grips into the holder. The showerhead will not fit in the holder without the hose attached.



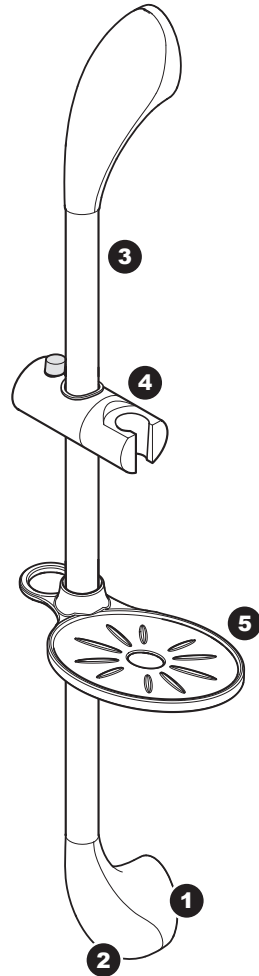
SPARE PARTS

Ref. Description	Part Number
-------------------------	--------------------

Kit without riser rail	
White	88900024
Satin grey	88900025
Chrome	88900026
1. Bracket (<i>single</i>)	
White	7054060
Chrome	7054064
Satin	7054062
2. Bracket Cap (<i>single</i>)	
White	7054061
Chrome	7054065
Satin	7054063
3. Riser rail	
430 mm - <i>anodised</i>	7042409
430 mm - <i>white</i>	7042411
430 mm - <i>chrome</i>	7042412
940 mm - <i>anodised</i>	7042935
4. Showerhead holder	
White	83313470
Chrome	83314210
Satin	83314200
5. Soap dish - <i>white</i>	7054123
Soap dish - <i>clear</i>	7054124

Flexible hoses available in the following sizes:

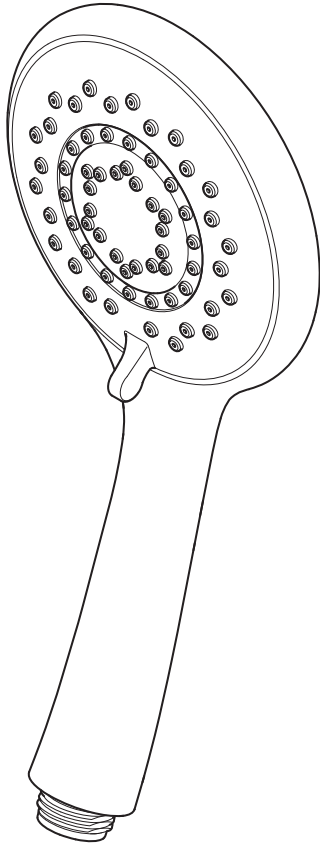
- 1.00 m in white, chrome and gold
- 1.25 m in white, chrome and gold
- 1.75 m in chrome only



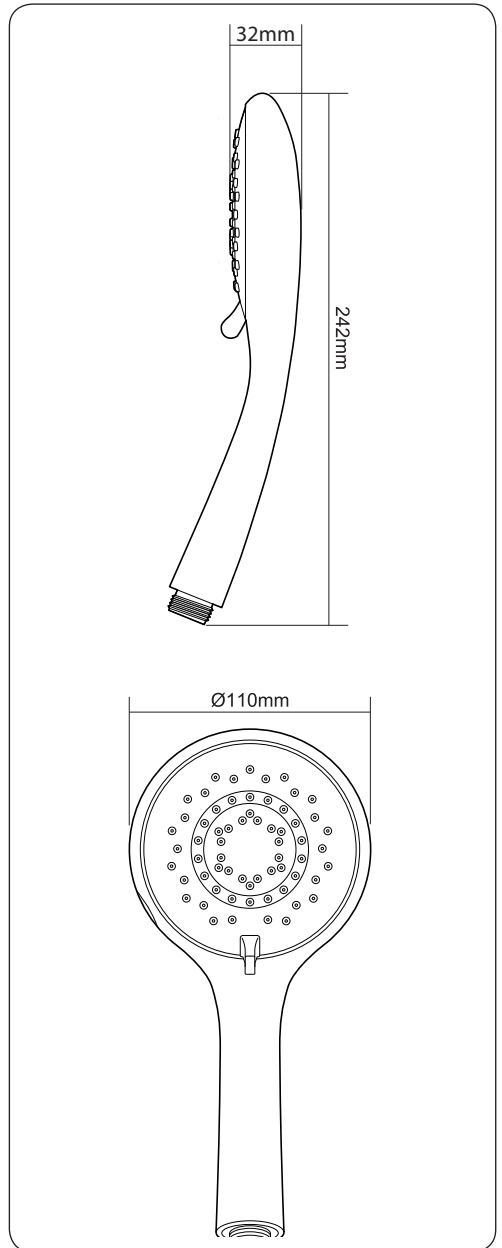
Please note: No 1 and 2 are used for both top and bottom bracket.

Please refer to shower installation and operating instructions for service details

8000 Series Showerhead

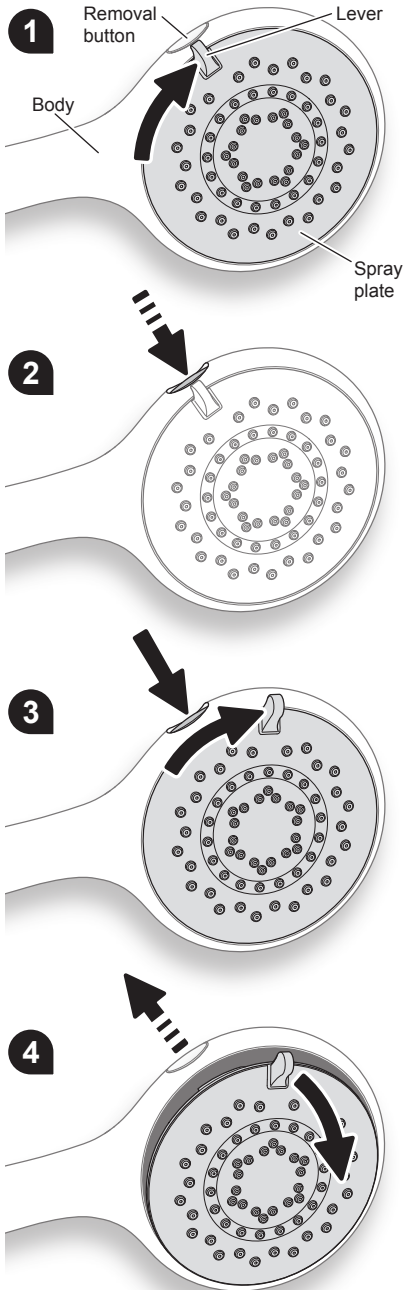


Maintenance Instructions



INSTALLERS PLEASE NOTE THESE INSTRUCTIONS ARE TO BE LEFT WITH THE USER

8000 SERIES SHOWERHEAD



This instruction book covers the operation and cleaning of the showerhead.

SHOWERHEAD SPRAY POSITIONS

Five showerhead patterns are available.

Adjust the spray pattern by turning the lever on the showerhead in either direction until the desired pattern is obtained. These positions are located at 4, 5, 6, 7 and 8 o'clock, when the showerhead is in the vertical position.

REMOVING THE SPRAY PLATE

IMPORTANT: Before cleaning, turn off the unit at the mains supply to avoid the shower being accidentally switched on.

- 1 Rotate the spray plate clockwise until it reaches its 'stop' position facing the removal button.
- 2 Press and hold the removal button in.
- 3 With the removal button held in, rotate the face plate clockwise past the removal button until it stops.
- 4 Release the removal button and gently pull the face plate away from the body using the adjustment lever.

IMPORTANT

Should any difficulty arise when trying to remove the spray plate (image 4) **DO NOT** try to force it out of the body by hand, or by using tools such as a screwdriver. Reset the spray plate to the position shown in image 7 and repeat steps 1-4 as listed above.

DO NOT remove the inner plate (image 5). Removing this, **WILL** invalidate any product warranty.

8000 SERIES SHOWERHEAD

CLEANING

Triton recommends that all products are cleaned using warm, soapy water.

DO NOT use abrasive or aggressive chemical cleaning products as this may affect the product surface and finish and invalidate your guarantee.

NOTE: *The showerhead can be cleaned quickly by simply rubbing your fingers over the spray plate.*

IT IS IMPORTANT TO KEEP THE SHOWERHEAD CLEAN TO MAINTAIN THE PERFORMANCE OF THE SHOWER. The hardness of the water will determine the frequency of cleaning. For example, if the shower is used every day in a very hard water area, it may be necessary to clean the showerhead on a weekly basis.

REPLACING THE SPRAY PLATE

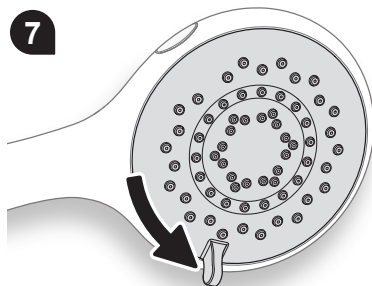
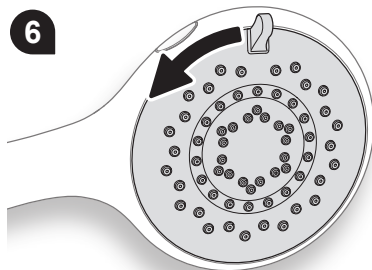
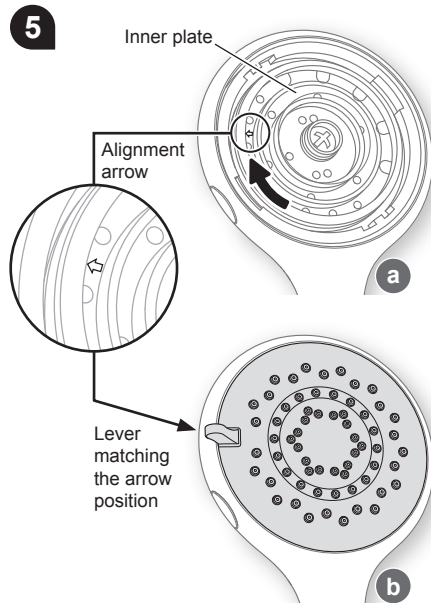
- 5 The spray plate and face plate **MUST** be aligned correctly for reinstallation. To align them correctly, please do the following:
 - a Ensure that the inner plate is turned fully clockwise until it stops. The alignment arrow position is approximately 9 o'clock, when the showerhead is in the vertical position.
 - b The lever **MUST** then be matched up with the arrows position to reinstall the spray plate correctly.

Should any difficulty arise when trying to refit the spray plate **DO NOT** try to force it back into position. Please make sure the arrow and lever positions are correct.

Once in place, the spray plate face should be gently pressed until its edges sit flush with the body.

- 6 Now installed into the body, start to turn the spray plate anti-clockwise.
- 7 To lock the plate back into the mechanism, the spray plate **MUST** be rotated fully anti-clockwise until it stops.

IMPORTANT: *The showerhead should be directed towards waste, and the shower switched on to ensure the spray plate is locked into the mechanism before use.*



SPARE PARTS

Ref. Description **Part number**

1. 5 mode rub clean showerheads

SHOWER HEADS

(mixer showers only)

88500060	WHITE MIXER
88500061	CHROME MIXER
88500068	SATIN MIXER

(electric showers only)

88500062.....	INCLUSIVE WHT
88500069	ELEC SATIN
88500070	INCLUSIVE CHROME
88500074	ELEC WHITE
88500075	ELEC CHROME

2. Flow Regulator

FLOW REGULATORS

22011740.....	4 L/MIN
22011750.....	5 L/MIN
22011760.....	6 L/MIN
22011610.....	7 L/MIN
22011280.....	8 L/MIN

