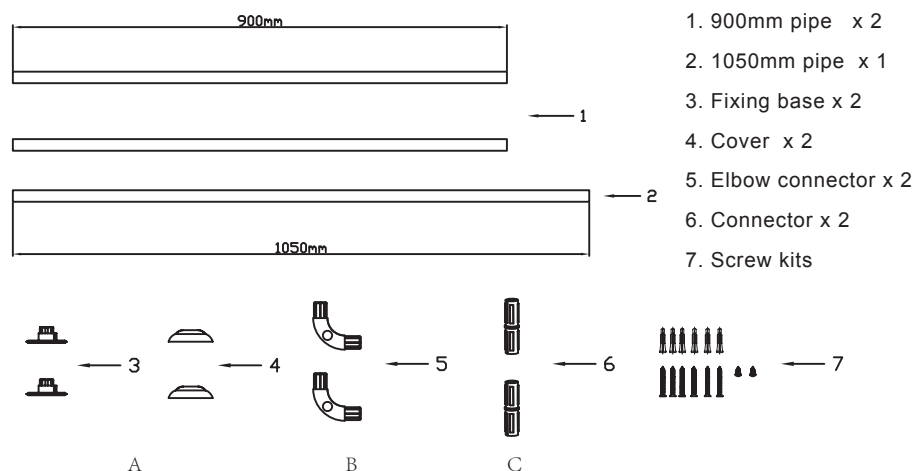


Installation instructions

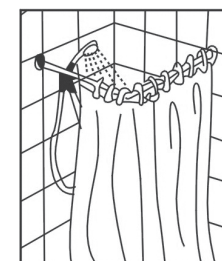
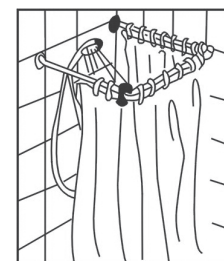
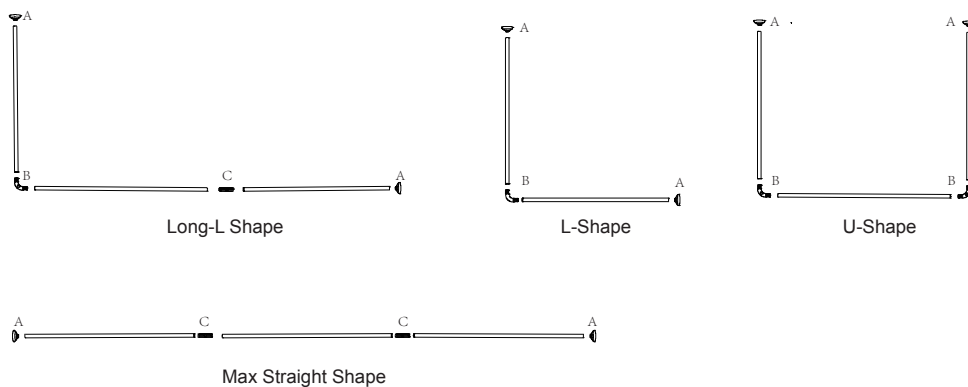


Thank you for purchasing this Victorian Plumbing product. Please follow these care instructions to ensure your product retains its high quality finish - **and retain this leaflet for future reference.**

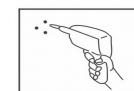
1. Identify all components are present prior to installation



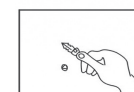
2. Four size selection



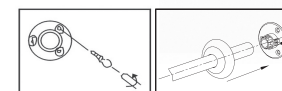
1. Mark position for screw hole



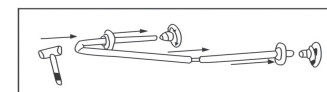
2. Drill holes for Φ 5MM diameter



3. Insert plugs and mount article on the wall using enclosed screws



4. Put the round bracket on wall and screw it by tool



5. Insert the end of pole to the fixed round bracket on wall, put back the cover on round bracket

Choose which one suitable for requirement in bathroom to prevent water from splashing out and maintain the bathroom to be dry

Victorian Plumbing

Diamond House. 41, Stephenson Way. Formby Business Park Formby. England. L37 8EG

Tel: 0044 800 862 0878

Website: www.victorianplumbing.co.uk