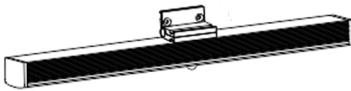


INSTALLATION  
INSTRUCTIONS

1 x TURNABLE LED  
UNDER BED  
BATTERY LIGHT  
WITH PIR SENSOR

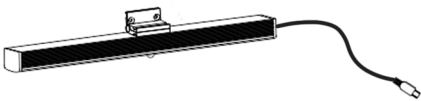


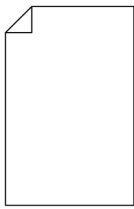

**CODE: SE20292W0**



**IMPORTANT:** Please read these instructions before commencing installation and retain for furture reference.

Components

Tools required

	 4 x Screws			
1 x SE20292W0 Under bed light with cable		1 x Lithium ion battery pack	1 x instructions	Screw Driver

Important Safety Information

Please read these instructions carefully before attempting to install this product. It is advisable to keep these instructions in a safe place for future reference.

We recommend that you consult a qualified electrician. All electrical installation must be carried out in accordance with current IEE wiring regulations (BS7671).

These products must not be modified, if any modification are made, it may invalidate the warranty and may render the product unsafe. This LED light is Lithium ion battery powered.

Do not wire the individual LED light fittings to the mains.  
This product is only to be used indoors.

- If in doubt installation must be carried out by a qualified electrician.
- Install on smooth flat surface(s) only.
- Do not exceed or stretch the cable length of each LED wire.
- The wattage for this under bed light is 0.4W.
- The battery pack supplied with this light should be used to power the LED's using the connecting cable.
- To charge the battery connect the battery pack to the mains using the appropriate Sensio USB charger.

Safety Instructions

1. This product is only suitable for connecting to the supplied battery pack.
2. The lights should be mounted onto a secure surface.
3. Suitable for furniture lighting.
4. When the lamp expires the fitting must be replaced.

Waste Electrical & Electronic Equipment (WEEE)

The symbol on the product, or on the document accompanying the product, the crossed out wheelee bin symbol, indicates that this product may not be treated as household waste. Instead it shall be handed over to the applicable collection point for the recycling of electrical and electronic waste.



**RoHS**  
Compliant ✓ **CE**

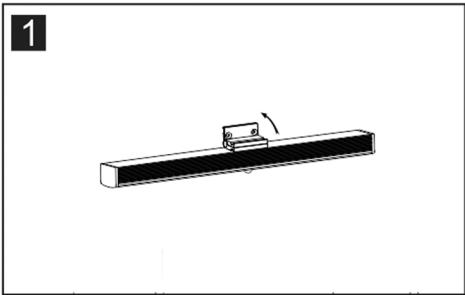
Sensio House, Unit 7, Speedwell Road, Whitwood, Castleford, West Yorkshire, WF10 5PY

[www.sensio.co.uk](http://www.sensio.co.uk)

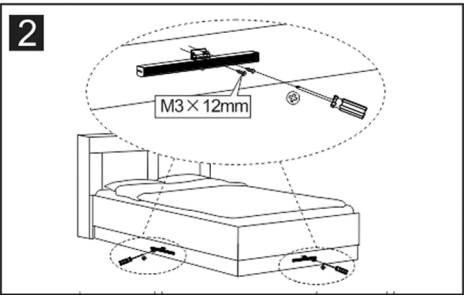
Technical drawings for illustration purposes only, Sensio had the right to change any information without prior notice. Make sure you check all hole cut outs before work commences.

1 x LED UNDER BED BATTERY LIGHT

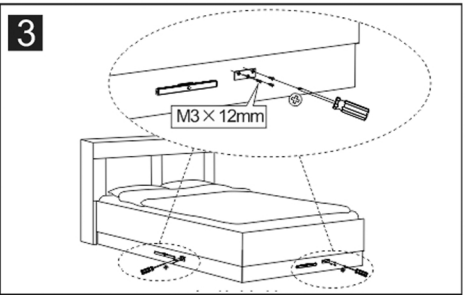
Installation



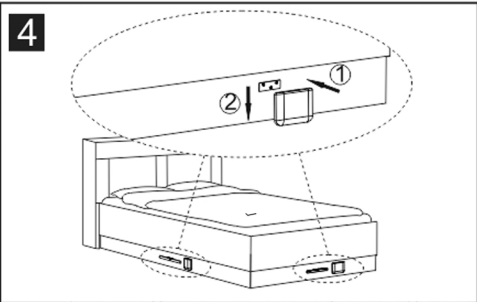
Turn the light so that the screw holes are accessible, as shown above. The light can be turned to a desired position after installation.



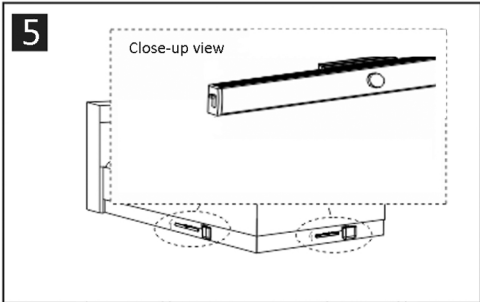
Using the screws provided mount the light to the desired position under the bed, as shown above.



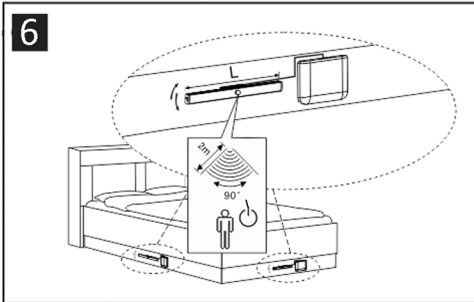
Then, using screws, fix the mounting bracket for the battery pack to the bed, near enough to the light so that the cable can reach.



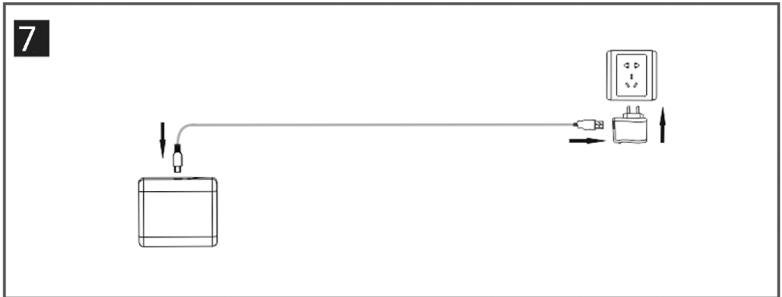
The flat edge of the mouting bracket should lie flush with the surface. Fix the battery pack to the mounting bracket by sliding forward and down, you should hear a click when secure.



Use the switch located on the side of the LED to turn off/on the LED and sensor when desired.

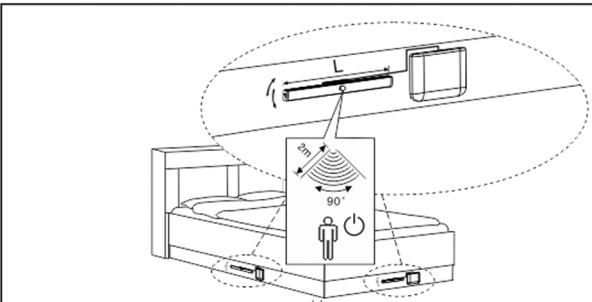


Tilt the under bed light to your desired position and so that movement can be picked up by the sensor.



To recharge the battery remove the battery pack from the mounting bracket by gently pushing up and then pulling towards yourself. Then connect the USB cable to the charger and light. The indicator light will be red whilst charging. When finished charging the light will turn green.  
Charging time: 4hours, continuous working time: 7.5 hours.

Operation



The LED under bed light has a built-in PIR sensor. This sensor will detect motion from a distance of 2m and the light will switch on. Recharge the battery pack unit using the SE2007000 pluggable USB charger.

Maintenance & Care

- Ensure that the power is disconnected prior to cleaning.
- To keep the finish of this product, wipe over with soft cloth periodically.
- Do not use harsh chemical solvents, this may dis-colour or damage the finish.

Sensio House, Unit 7, Speedwell Road, Whitwood, Castleford, West Yorkshire, WF10 5PY  
[www.sensio.co.uk](http://www.sensio.co.uk)

Technical drawings for illustration purposes only, Sensio had the right to change any information without prior notice. Make sure you check all hole cut outs before work commences.