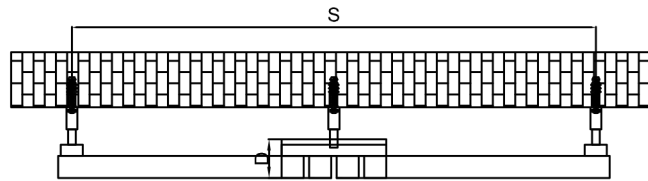
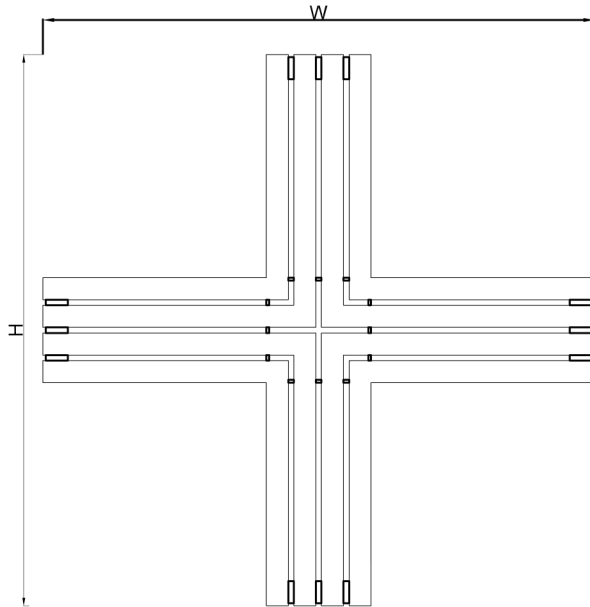


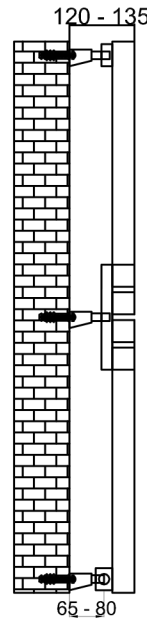
POSITIVE - 1000



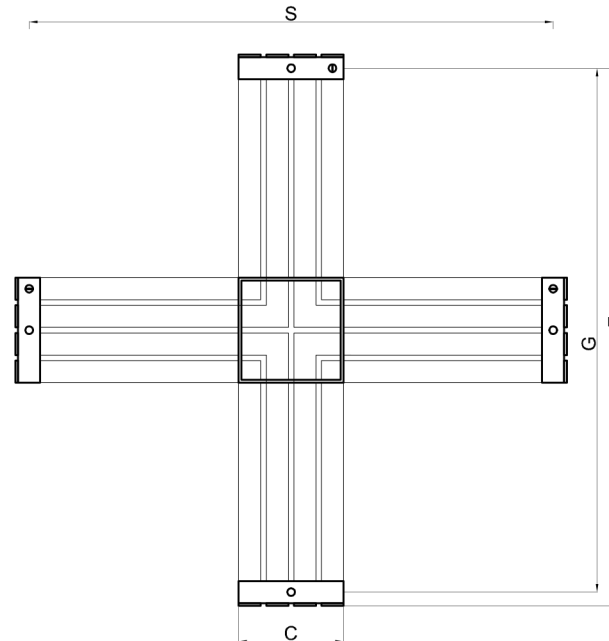
Top View



Front View



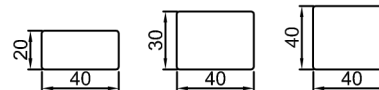
Side View



Back View

| |
|---|
| -Vertical Mounting |
| -Optional 304 QUALITY STAINLESS STEEL RADIATOR: (RNS-PZV1010 : POZITIVE RADIATOR) |
| -SATIN |
| -Max Operational Pressure: 10 Bar |
| -Inlet/Outlet: 1/2" Female Pipe Thread |
| -All Dimensions are in mm |

MATERIAL DETAILS



SUPPLIED INSTALLATION ACCESSORIES



SCREW 4 PCS



WALL PLUG 4 PCS



INSERT 4 PCS



GRAB SCREW 4 PCS



BRACKET 4 PCS



ALIEN KEY 1 PCS

| Product Name | Product Code | Height | Width | Thickness | Plumbing Axes Center to Center | Hanger Axes Horizontal | Hanger to Bottom of the Product | Hanger Axes Vertical | Water Volume | Empty Weight | Thermal Output |
|----------------------|--------------|--------|-------|-----------|--------------------------------|------------------------|---------------------------------|----------------------|--------------|--------------|----------------------|
| | | H | W | D | C | S | F | G | - | - | Watt - BTU/hr (Δ50°) |
| | | mm | mm | mm | mm | mm | mm | mm | L | kg | |
| POZITIVE 1000 X 1000 | RNS-PZV1010 | 1000 | 1000 | 70 | 190 | 950 | 975 | 950 | 10.60 | 20.00 | 882 - 3009 |
| | | | | | | | | | | | |

REINA