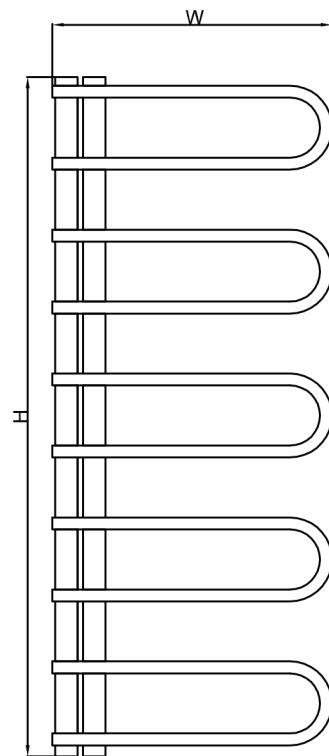
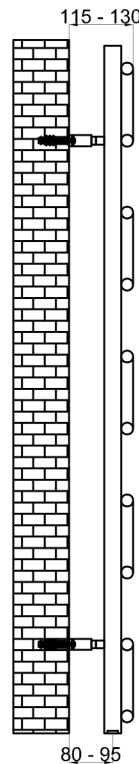


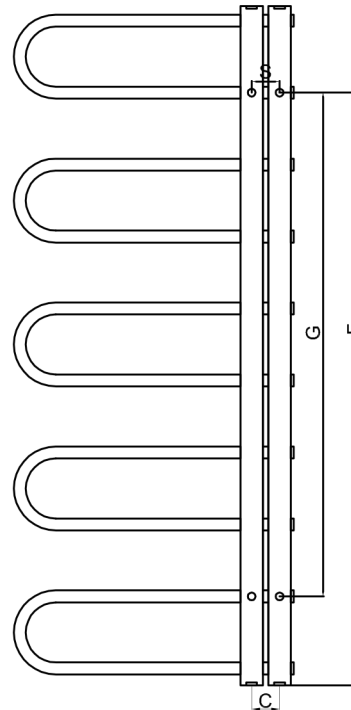
OGLIO - 500



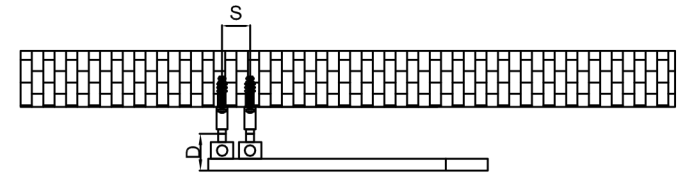
Front View



Side View



Back View



Top View

SUPPLIED INSTALLATION ACCESSORIES



SCREW 4 PCS



WALL PLUG 4 PCS



BRACKET 4 PCS



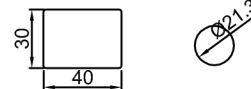
GRAB SCREW 4 PCS



ALIEN KEY 1 PCS

-Vertical Mounting
-Optional 304 QUALITY STAINLESS STEEL TOWEL RADIATOR: (RNS-OGL5121P : OGLIO RADIATORS)
-POLISHED
-Max Operational Pressure: 10 Bar
-Inlet/Outlet: 1/2" Female Pipe Thread
-All Dimensions are in mm

MATERIAL DETAILS



Product Name	Product Code	Height	Width	Thickness	Plumbing Axes Center to Center	Hanger Axes Horizontal	Hanger to Bottom of the Product	Hanger Axes Vertical	Water Volume	Empty Weight	Thermal Output
		H	W	D	C	S	F	G	-	-	Watt - BTU/hr (Δ50°)
		mm	mm	mm	mm	mm	mm	mm	L	kg	
OGLIO 700 X 500	RNS - OGL5070P	700	500	66.2	50	50	545	386	2.23	4.57	193 - 658
OGLIO 1215 X 500	RNS - OGL5121P	1215	500	66.2	50	50	1060	810	3.90	6.70	470 - 1603

REINA