

Safety

Target group and qualification


The Geberit product is only allowed to be mounted by a trained plumber in accordance with the installation instructions and the safety regulations.

Use

The AquaClean 5000 and AquaClean 5000*plus* may only be used as add-on units for WC ceramic appliances with exposed or concealed cisterns.

Do not install the AquaClean 5000 and AquaClean 5000*plus* in rooms where there is a risk of frost. The minimum ambient temperature is 10 °C.

Explanation of symbols

Symbol	Meaning
	Pay special attention to the activity step.

Contact

For technical information or if you have any questions, please contact the responsible Geberit sales company or visit www.geberit.com.

Technical data

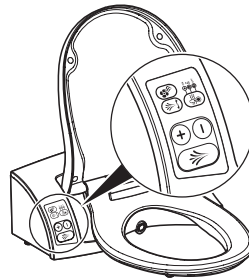
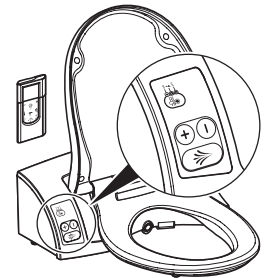
Frequency	50 - 60	Hz
Nominal voltage	230	V AC
Cable length	2	m
Power consumption	850	W
Flow pressure range	1 - 10	bar
Humidity	max. 95	% relative
Net weight	6.3	kg

Installation

Installation difference

These installation instructions show the installation of the AquaClean 5000*plus* add-on unit. The steps for the AquaClean 5000 add-on unit are not shown but are identical.

AquaClean 5000


AquaClean 5000*plus*


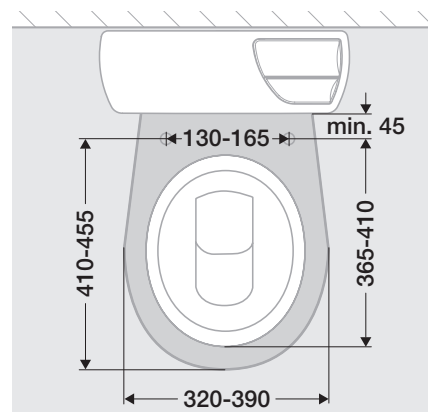
Installation consists of the following steps:

- Establish the water supply and electrical connection
- Mount add-on unit on WC ceramic appliance
- Connect add-on unit to water supply connection
- Connect add-on unit to electrical connection

The water supply connection of the add-on unit can be established with an exposed or a concealed cistern.

Prerequisites

- Earthed electrical connection provided
- Water supply connection provided
- Dimensions of WC ceramic appliance checked in view of use with AquaClean 5000, AquaClean 5000*plus* (sample template 998.425.00.0)



Establishing the water supply connection with an exposed cistern

It depends on the type of water supply connection whether or not a water supply connection set is required. The following water supply connection sets are available:

- Water supply connection to the side on the left
→ Included in standard connection set
- Water supply connection to the rear in the centre
→ Water supply connection set art. no. 115.438.00.1
- Water supply connection to the side on the right
→ Water supply connection set art. no. 240.396.00.1

- 1 Determine the position of the water supply connection (left side, rear centre, right side)
- 2 Check if the correct water supply connection set is at hand
- 3 Establish the water supply connection according to the installation instructions supplied with the water supply connection set.

Establishing the water supply connection with a concealed cistern

It depends on the type of cistern whether a water supply connection set is required. The following water supply connection sets are available:

- UP300 / UP320 concealed cistern with conduit pipe
→ Water supply connection set art. no. 249.801.00.1
- UP200 concealed cistern element height 82 cm with conduit pipe
→ Water supply connection set art. no. 240.634.00.1
- UP200 concealed cistern element height 98 cm with conduit pipe
→ Water supply connection set art. no. 240.635.00.1

- 1 Check whether the concealed cistern is already equipped with a conduit pipe



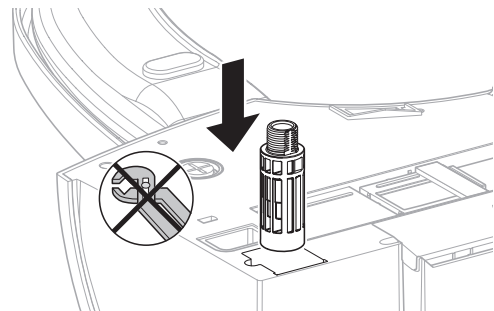
The sticker on the protection plate under the actuator plate indicates if the concealed cistern is equipped with a conduit pipe. If the cistern is not equipped with a pre-assembled conduit pipe, the water supply connection can be established visibly over tiles / plaster or through an external connection.



- 2 Check the type of concealed cistern and the element height
- 3 Check if the correct water supply connection set is at hand
- 4 Establish the water supply connection according to the installation instructions supplied with the water supply connection set

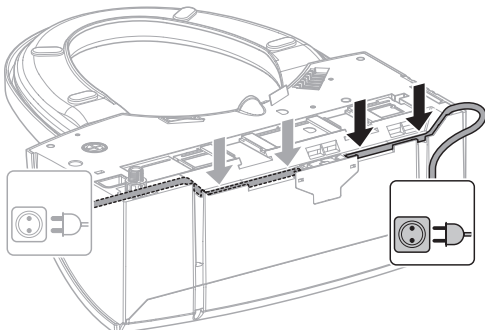
Mounting add-on unit to WC ceramic appliance

- 1 Tightly screw the filter element onto the underside

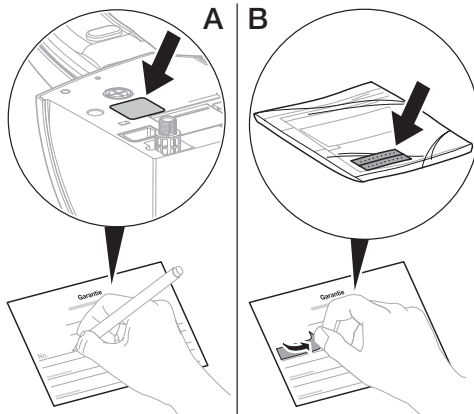


- 2 Check on which side of the WC ceramic appliance the mains connection is located

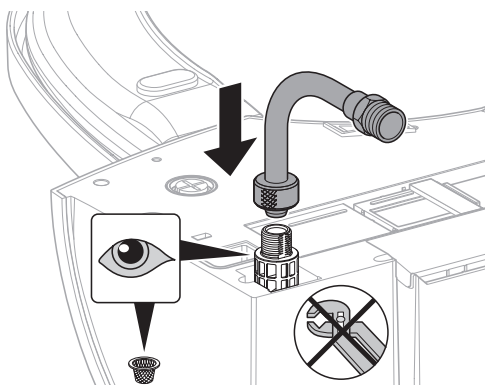
- 3** According to the position, install the mains connection cable on the underside on the left or on the right



- 4** Read the serial number from the specification plate and transfer it to the guarantee card (A) or otherwise remove the sticker with the serial number from the packaging of the end-user documentation and attach it to the guarantee card (B)



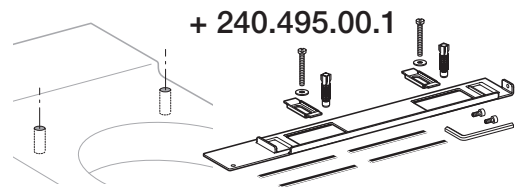
- 5** Screw the connection bend onto the valve



6

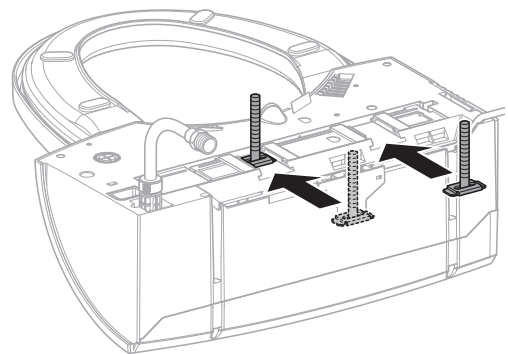


With WC ceramic appliances with holes that are not continuous (blind holes), use adapter plate (art. no. 240.495.00.1) to fasten the add-on unit and install it according to the installation instructions included with the adapter plate.



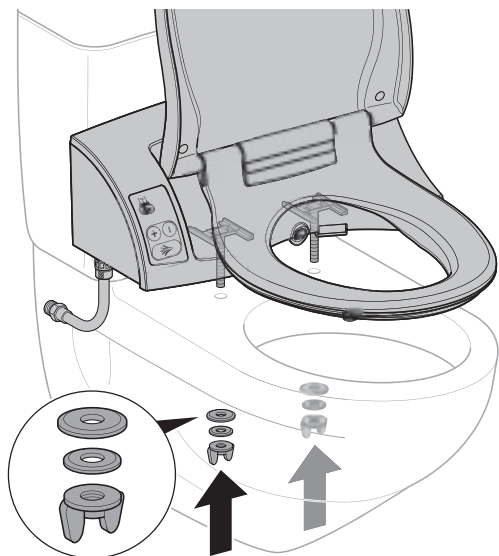
7

Insert the fastening screws

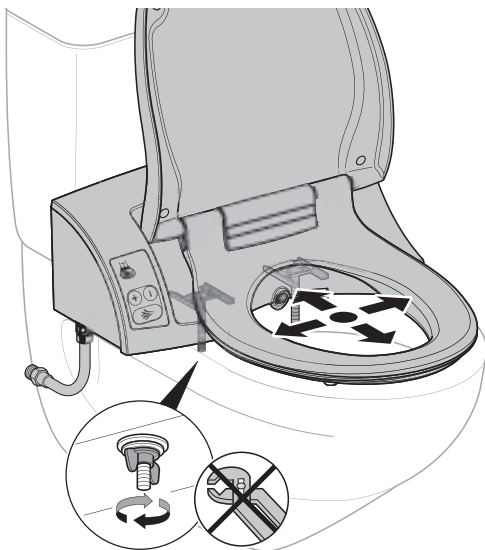


8

Put add-on unit with fastening screws onto WC ceramic appliance and slightly tighten wing nuts



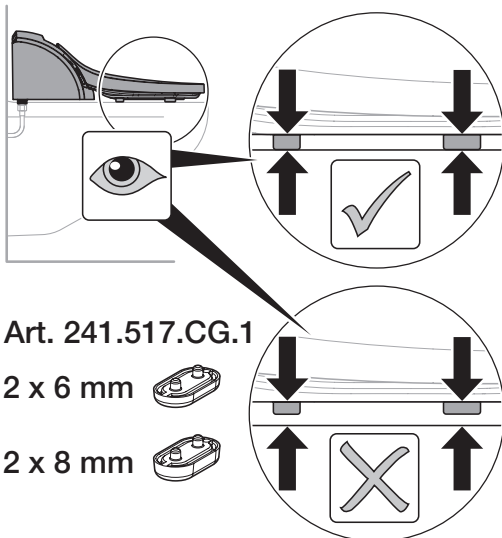
9 Align add-on unit and tighten wing nuts



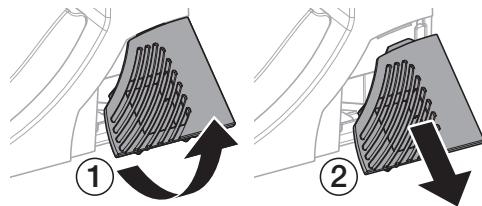
10

i The add-on unit can be damaged if the compensation pads do not lie evenly on the WC ceramic appliance.

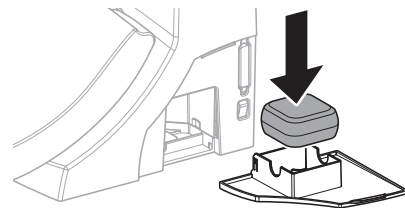
Check the position of the compensation pads and replace them if necessary



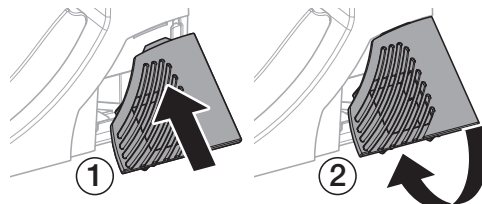
11 Open filter compartment



12 Remove active carbon filter from the bag and insert it into the filter compartment



13 Close filter compartment again



Connecting add-on unit to water supply connection

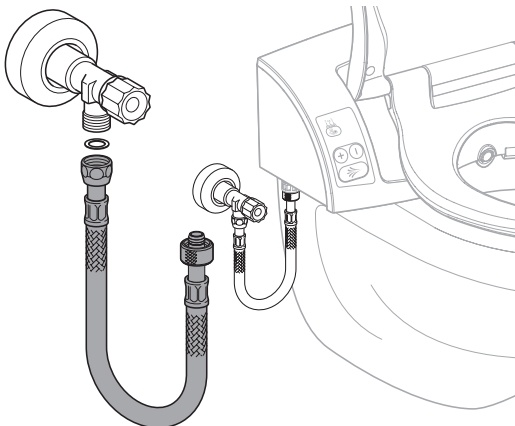
Depending on the type of water supply connection of the concealed or exposed cistern, the add-on unit is connected differently.

Prerequisites

Water supply connection of concealed or exposed cistern has been established.

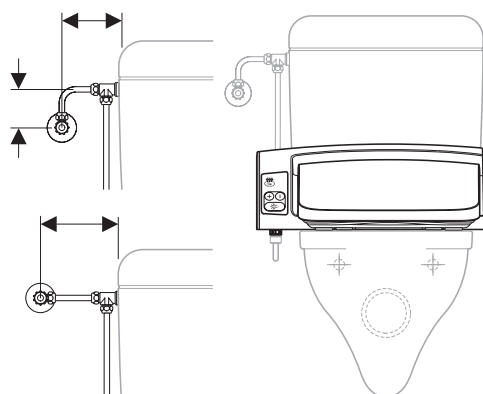
1 Close the central water tap

i With concealed cisterns, the add-on unit can be connected to the angle stop valve according to the installation instructions supplied with the water supply connection set.

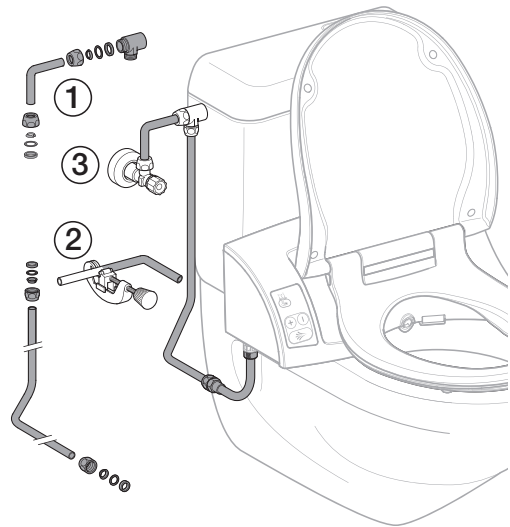


i With exposed cisterns, the add-on unit can be connected to the angle stop valve according to the following steps or to the installation instructions supplied with the water supply connection set.

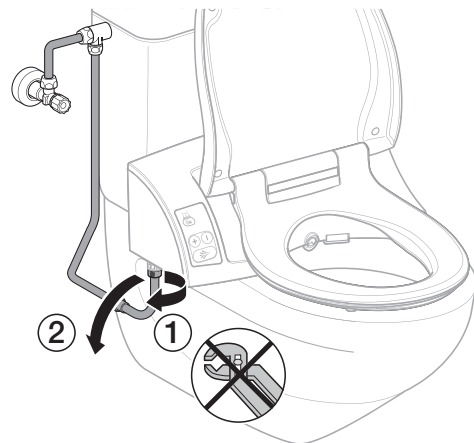
2 Measure the water supply connection



3 Connect the water supply connection to the connection bend

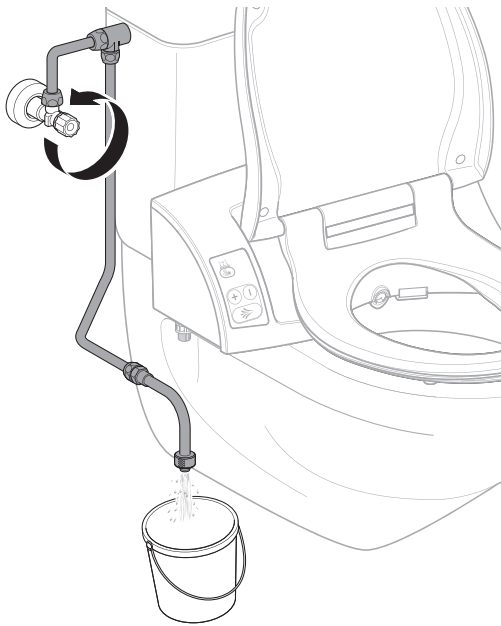


4 Loosen the connection bend from the add-on unit and turn it downwards

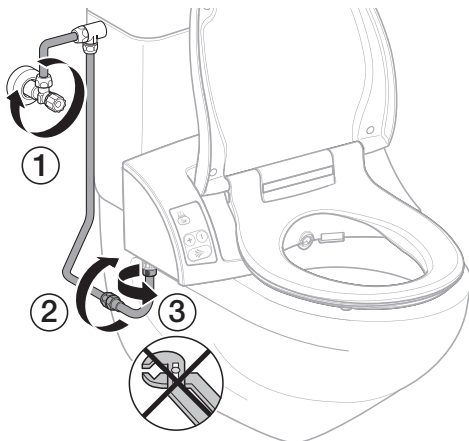


5 Open the central water tap

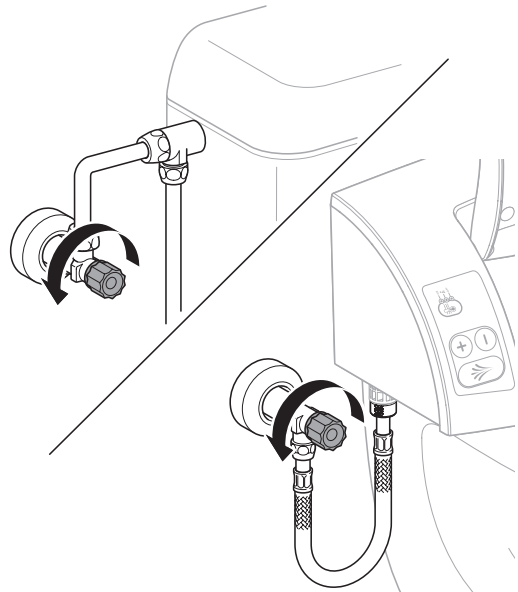
6 Open the angle stop valve and flush the pipe



7 Close the angle stop valve again, turn the connection bend upwards and connect it to the add-on unit



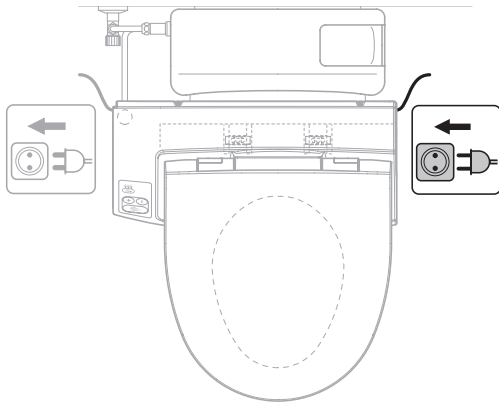
8 Open the angle stop valve



Tests after installation

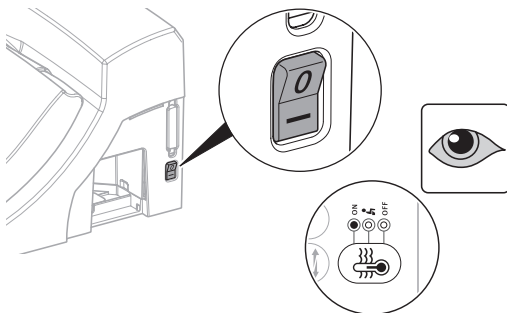
Checking functions with the control panel

- 1 Connect the mains plug



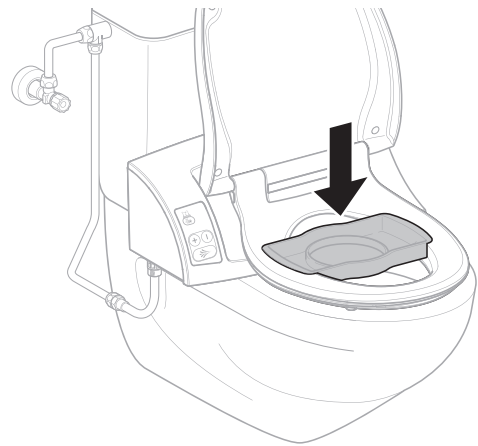
- 2 Open the filter compartment

- 3 Switch on the power switch

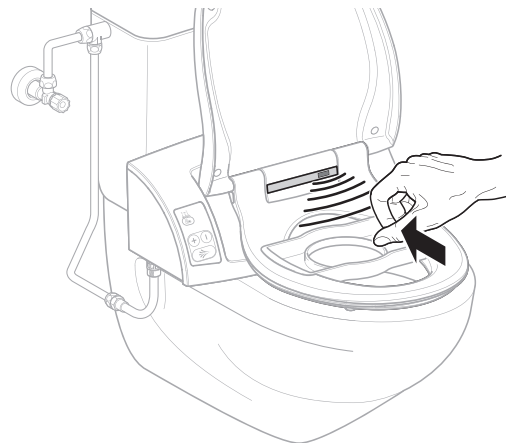


- 4 Close filter compartment again

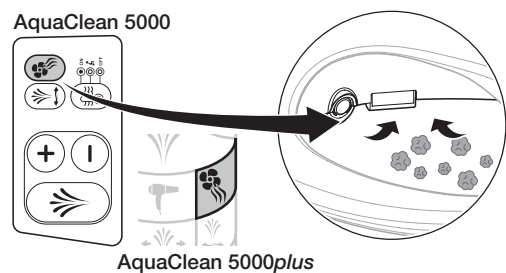
- 5 Place spray shield on the add-on unit



- 6 Cover the window of the user detection with your hand

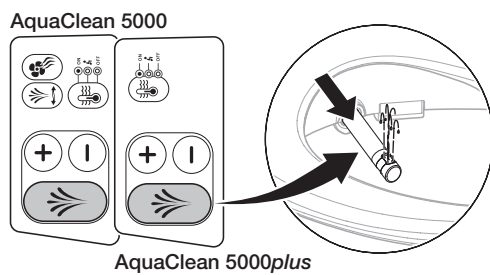


- 7 The air purification automatically starts after 4 - 6 s. Press button (ON / OFF) to start air purification manually

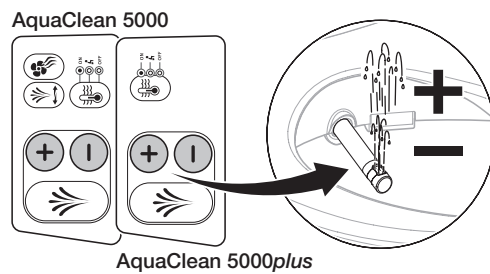


i The spray nozzle is automatically cleaned before and after each shower operation.

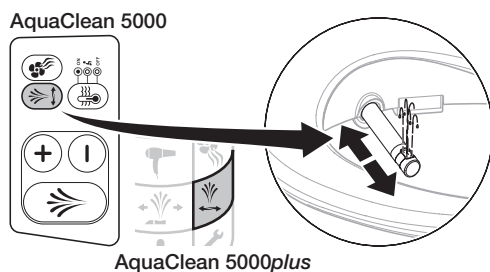
8 Press the shower button on the control panel: The spray arm is extended, the shower starts



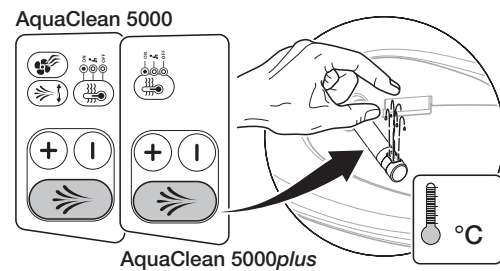
9 Check the spray intensity by pressing the buttons



10 Start and stop oscillation by pressing the button

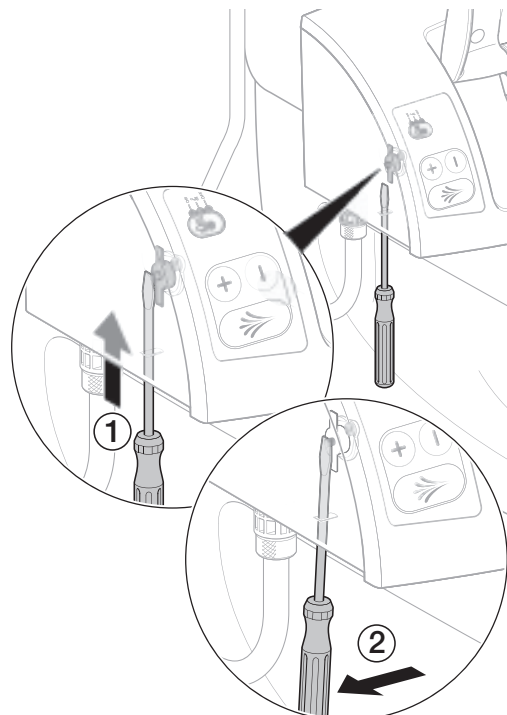


11 Wait 3 min. Press shower button again and check whether shower water is at body temperature



i If the storage or transport temperature exceeds 45 °C, the safety thermostat will be tripped.

12 If water is cold, reset safety thermostat



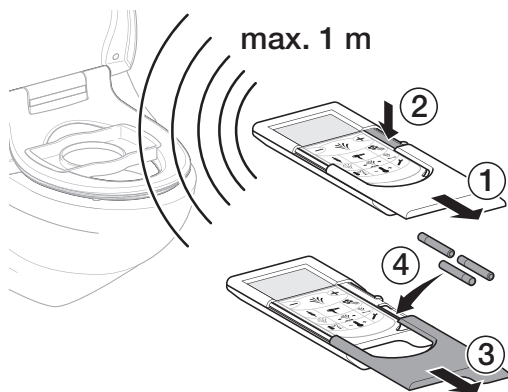
Checking functions of AquaClean 5000plus with the remote control

Prerequisites

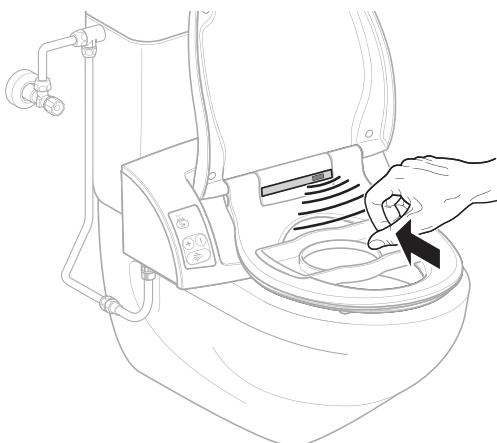
Functions are checked at the control panel and control panel is ready for operation.

- 1 Insert batteries into remote control

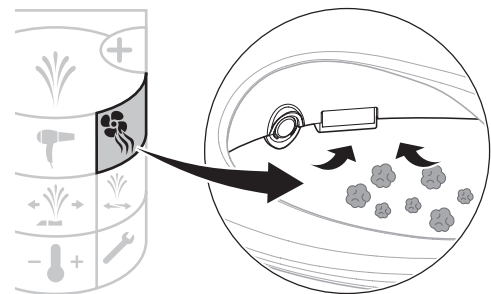
i To recognise the add-on unit at commissioning, the remote control has to be closer than 1 m to the add-on unit when the batteries are inserted.



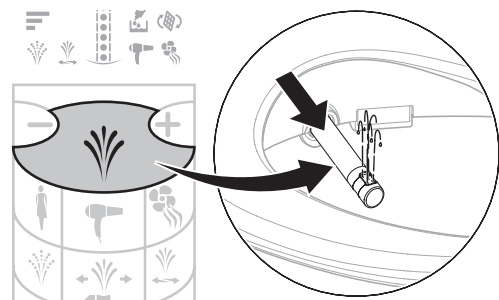
- 2 Cover the window of the user detection with your hand



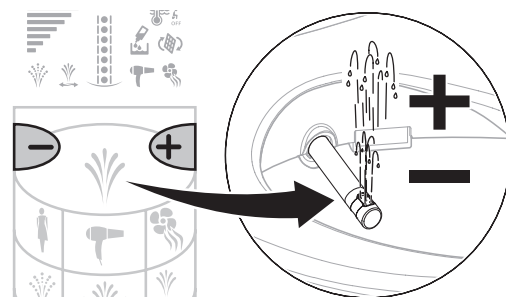
- 3 Manually switch the air purification on and off



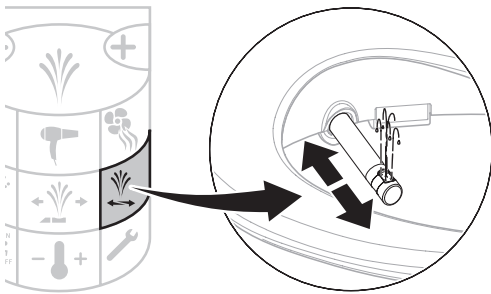
- 4 Press shower button: The spray arm is extended, the shower starts



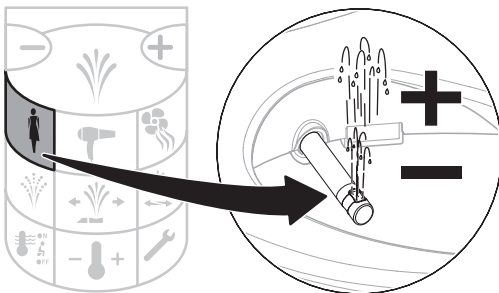
- 5 Check the spray intensity by pressing the buttons



6 Start and stop oscillation by pressing the button



7 Start and stop Lady shower by pressing the button



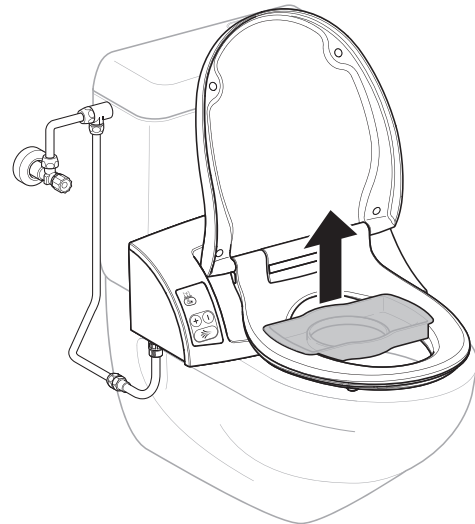
Start-up operation

Making add-on unit ready for operation

Prerequisites

Function checks with the control panel and with the remote control have been completed successfully.

1 Remove the spray shield



2 Clean the add-on unit

Acceptance

Hand add-on unit over to the customer

- 1 Instruct customer about operation
- 2 Explain maintenance notes and cleaning instructions to the customer
- 3 Hand end-user documentation to the customer
- 4 Fill in the guarantee card together with the customer (end-user documentation) and send it to Geberit