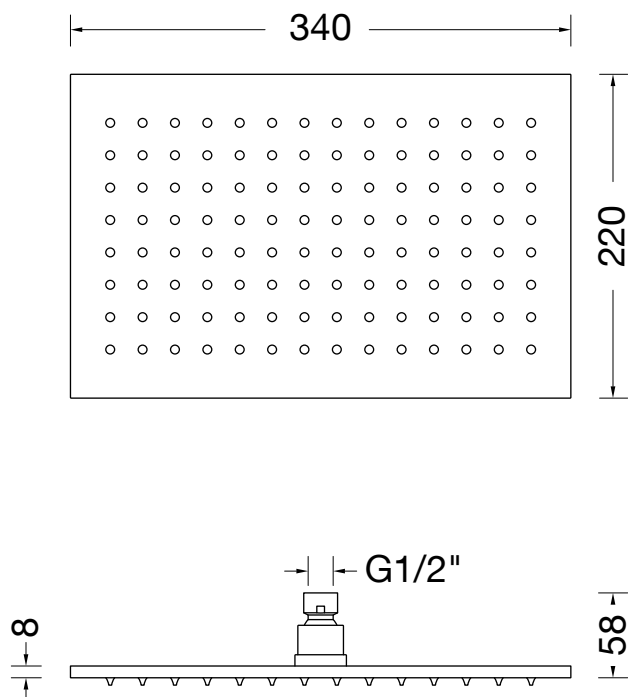
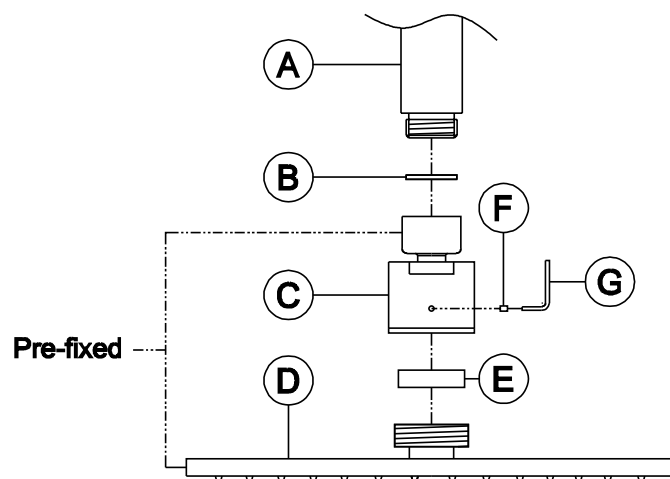


## DIMENSIONS



4

## INSTALLATION



- (A) Shower arm / Wall outlet
- (B) Mesh filter
- (C) Swivelling nut
- (D) Showerhead
- (E) Lower seal
- (F) Grub screw
- (G) Allen key (size 1.5, 2.5 dependant on model)

5

crosswater<sup>x</sup>

## INSTALLATION

FH322C



Remember to turn off the mains water supply before connecting to any existing pipe work. Flush the piping with plenty of water prior to installation.

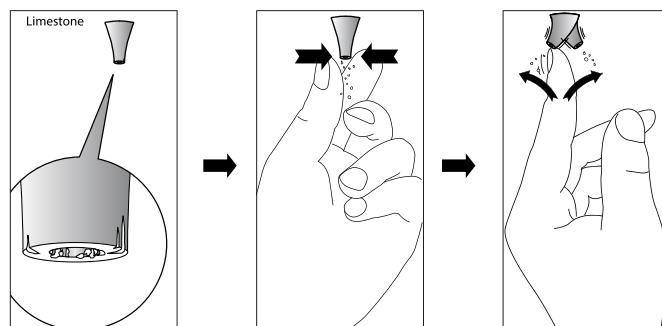
1. Loosely assemble the product as per the exploded drawing, note some parts may be supplied pre assembled. Do not disassemble any assemblies unless required to complete installation.
2. Attach any plumbing inlet connections as shown.
3. Attach any mounting fixings as indicated; secure the product firmly to the mounting surface.
4. Where the product includes a shower outlet refer to the separate instructions supplied.

6

## CLEANING

The chrome plate we use on our taps is very durable, nevertheless care should be taken when cleaning them. They should be cleaned only with warm soapy water followed by rinsing with clean water and drying with a soft cloth. All finishes are vulnerable to acid attack and some strong substances such as household cleaners, disinfectants, denture cleaners, hair dyes, wine making and photographic chemicals can cause the surface to go black or peel.

### Cleaning Tips



7

crosswater<sup>x</sup>

## THE QUALIFICATIONS

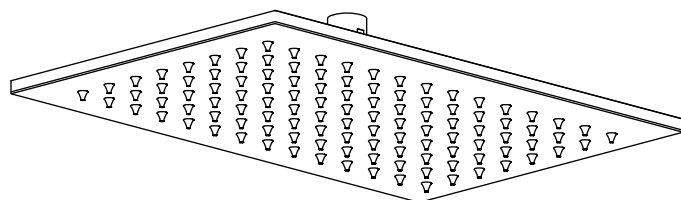
3. Should the installation be completed by a non-qualified person then the Vocational Qualification) or SNVQ (Scottish National Vocational Level

This product should only be fitted by a qualified plumber to a QOV (National Vocational Qualification)

For a claim made under our warranty written certification of your installer's credentials can be required. For further information or to find a qualified installer in your area please visit the Institute of Plumbers website - [www.iphe.org.uk](http://www.iphe.org.uk).

## RECTANGULAR SHOWER HEAD

FH322C



- Installation Performed By Qualified Personnel Only!
- Clean Carefully the water Pipes Before Installing The Tap.

**WARNING**

turn the boiler off and non return valves are not required.

**Preparation and bylaw requirements**

These taps are double flow. Water bylaw require that where the hot water is supplied from a tank and cold from the mains, non return valves are fitted on both hot and cold pipes as close as possible to the tap. These are not supplied. Where combination boilers are fitted it is only necessary to shut off the incoming mains and

### Preparation and bylaw requirements

applicable.

All product are manufactured using materials tested and approved under the Water Bylaws Scheme and comply with requirements of British Standard 5412:1996 where

**Approvals**

claimable under the warranty.

installation process, incorrect maintenance or misuse and as a result not be

- on receipt of this product the chrome finish must be checked for blemishes. Defects notified after fitting may be regarded as damage resulting from the

product may not correctly work or not work at all.

-if the above mentioned conditions (see points 1,2,3,4) are not observed, the

5. Warning:

4. We recommend installing filters to this product.

3. Maximum hot water temperature:.....80° c.....recommended 65° c

2. Maximum test pressure:.....5 Bar

1. Recommended working pressure:.....1 Bar

## Standard specifications

thoroughly before installation.

contained in their bylaws. All of the taps in this range are double flow (the hot and cold water are separated) and should therefore be supplied with hot and cold water at balanced pressures, both from the tank or both from the mains (via a combination boiler for example). If the taps are not supplied at balanced pressures then the tap will not function correctly. It will also be necessary to fit non-return valves on both hot and cold feeds. It is very important that all pipe work is flushed

## General Installation Requirements

•

Please read these instructions carefully and keep in a safe place for future

## INTRODUCTION

FH322C