

## ERSL - SLIDER ENCLOSURE (Note this is a 2 person assembly)

1. Fit the shower tray ensuring it is level across all areas. (Fig 1)
2. Apply silicone sealant to the edges of the tray after tiling. (Fig 2)
3. Take the wall channels (A) and position them 10mm from the front edge of the tray making sure they are vertical and plumb. Mark the fixing positions and drill for the wall plugs (x3) with an appropriate drill bit. Fit the wall plugs. Take care to avoid any hidden pipes or electrical cables. (Fig 3)

5. Fix the vertical profile (B) to the bottom rail (G) and screw through the vertical profile using the 30mm Screws as in Fig 4. (x2)

**Note! It is recommended that 2 people carry out this operation.**

6. Fix the vertical profile at the opposite end of the bottom rail again using the 30mm screws (x2). Repeat this for fixing the top rail (G) as in Fig 5.
7. Slide the wall channels onto either side of the assembled frame, carefully lift the frame into position and fix to the wall using the 30mm screws. Once aligned, drill x2 holes 150mm from the top & bottom on the inside of the enclosure with a 3.2mm drill bit, through the wall channel and frame (Fig 6) Secure by using the 10mm screws making sure the support cups are used.

8. Fit the glass side panel (F) into the vertical profile, then fit the fixed panel seal (J) on the inside between the glass and vertical profile as in Fig 7/8.
9. Fix the glass clamps (x2) into the pre-drilled holes in the top and bottom rail with the 10mm screws. (Fig 9)

13. Fit the double wheels into the pre-drilled holes (x2) in the glass door (E), by tightening the pre-inserted screw. (Fig 10)
  14. Fit the quick release wheels (x2) to the opposite end, again by tightening the pre-inserted screws. (Fig 11)
  15. Hang the doors onto the top rail making sure that the wheels are located in the channel. Then from the outside push down on the spring loaded wheels and clip into position. (Fig 12)
- Adjust using the adjustment screws as required.
16. Fit the handles using the 20mm screws supplied.

Fig 1



Fig 2



Fig 3



Fig 4



Fig 5

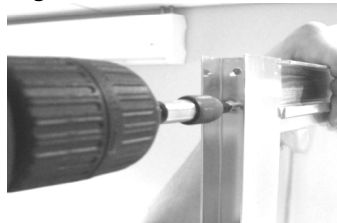


Fig 6



Fig 7



Fig 8



Fig 9

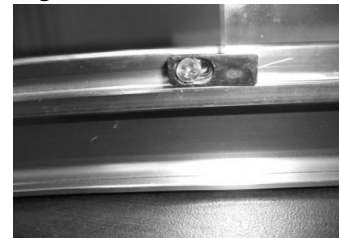


Fig 10



Fig 11

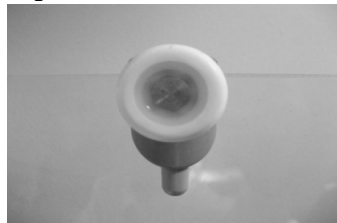


Fig 12



17. Measure and trim to length magnetic strip (C) and magnetic door seal (D). Fit the magnetic seal (C) into profile (B) on the side which the door is to close. Also fit the magnetic door seal (D) at this stage to the door (Fig 13). Measure and trim to length the vertical door seal (H) and fixed panel seal (I). 18. Apply silicone down the vertical edges of the wall channel, fixed glass panel and the bottom edge of the fixed glass panel (Fig 14/15). Seal (K) is provided for the bottom edges of the fixed glass panel if preferred. **DO NOT SEAL THE ENCLOSURE ON THE INSIDE OF THE TRAY!**

Fig 13



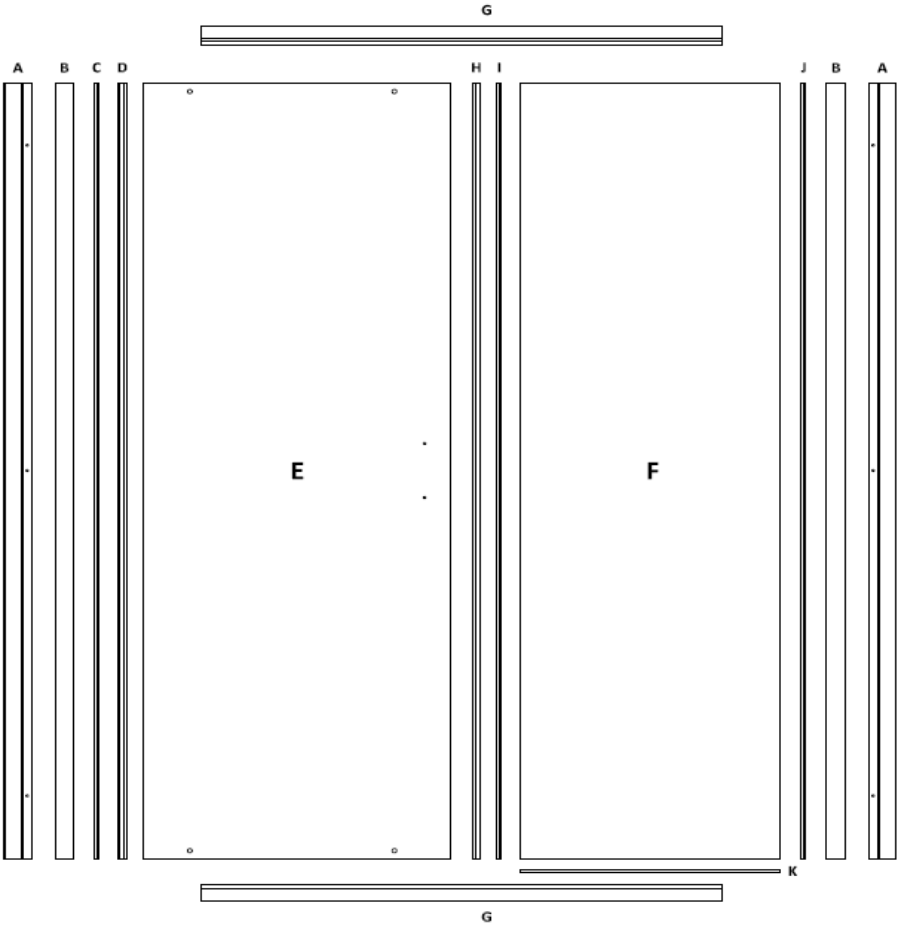
Fig 14



Fig 15



PARTS LIST		
A	WALL CHANNEL	x2
B	VERTICAL PROFILE	x2
C	VERTICAL PROFILE MAGNETIC SEAL	x1
D	SLIDING DOOR MAGNETIC SEAL	x1
E	SLIDING DOOR	x1
F	FIXED SIDE PANEL	x1
G	TOP & BOTTOM RAIL	x2
H	DOOR SEAL	x1
I	FIXED PANEL SEAL	x1
J	FIXED PANEL WEDGE SEAL	x1
K	GLASS SEAL ('T' SHAPED)	x1



FITTINGS LIST		
	10mm SCREWS	8
	20mm SCREWS	2
	30mm SCREWS	14
	WALL PLUGS	6
	GLASS CLAMP	2
	INNER SUPPORT CUPS	10
	SCREW COVER CAP	10
	WHEEL STOPS	2
	DOUBLE WHEEL	2
	QUICK RELEASE WHEEL	2
	SHOWER DOOR HANDLE	2

WHEN THIS ENCLOSURE IS TO BE FITTED WITH A SIDE PANEL, REFER TO THE SIDE PANEL INSTRUCTION IN CONJUNCTION WITH THESE.