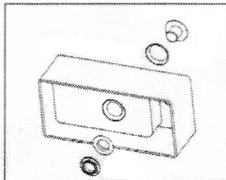
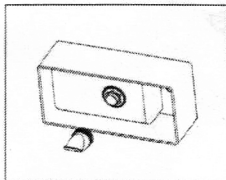


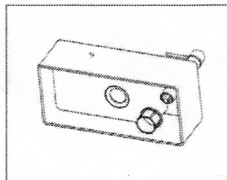
INSTALLATION OF 2 IN 1 WC & BASIN



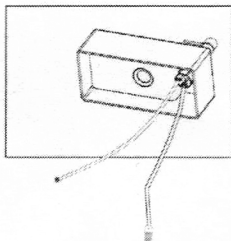
Step 1: Place and fix the waste and washer.



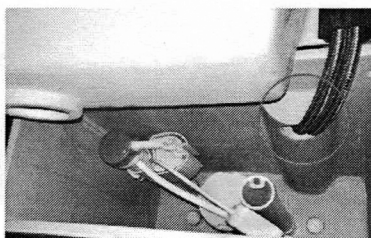
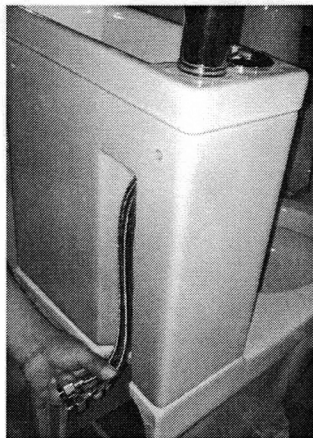
Step 2: Fit the Silicone sleeve on the bottom of the waste.



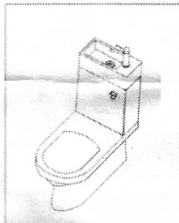
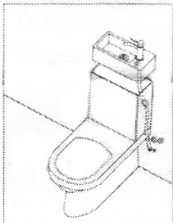
Step 3: Place the tap and tightly screw the fixing nut.



Step 4: Connect hot & cold water hose to the tap and connect the other end to outlet of the cistern.



INSTALLATION OF WASH BASIN



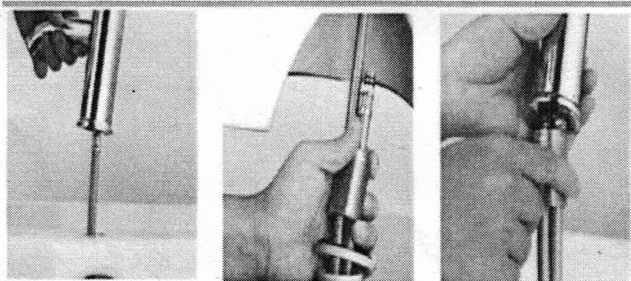
Note: During installation please ensure there is enough distance between the float of the inlet valve and the hoses, make sure there is no resistance to the normal operation of the inlet valve.

Combi De-luxe



POT955CM

Basin waste installation instruction



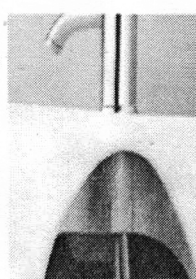
1, Fixed with one of flexi pipe

2, Fixed fix 2nd pipe with the film and lap at the bottom

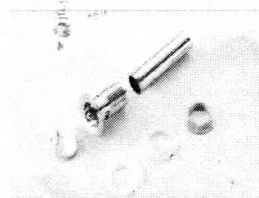
3, Tigtren the lap and back nut



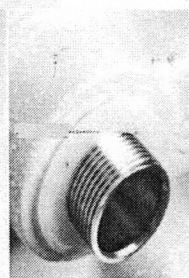
4, Tigtren the cover



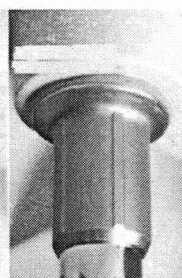
5, Finished



1, Fixed the film first and put in the hole



2, Fixed another film at the bottom



3, Tigtren the screw and finished

Images are for illustrative purposes - LH tap hole installation only