

AQUATUNES

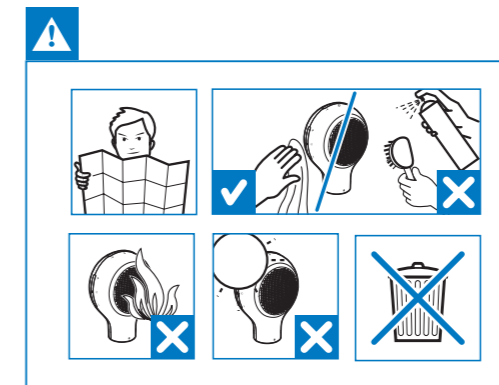
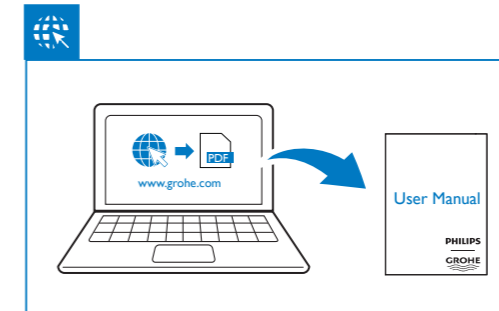
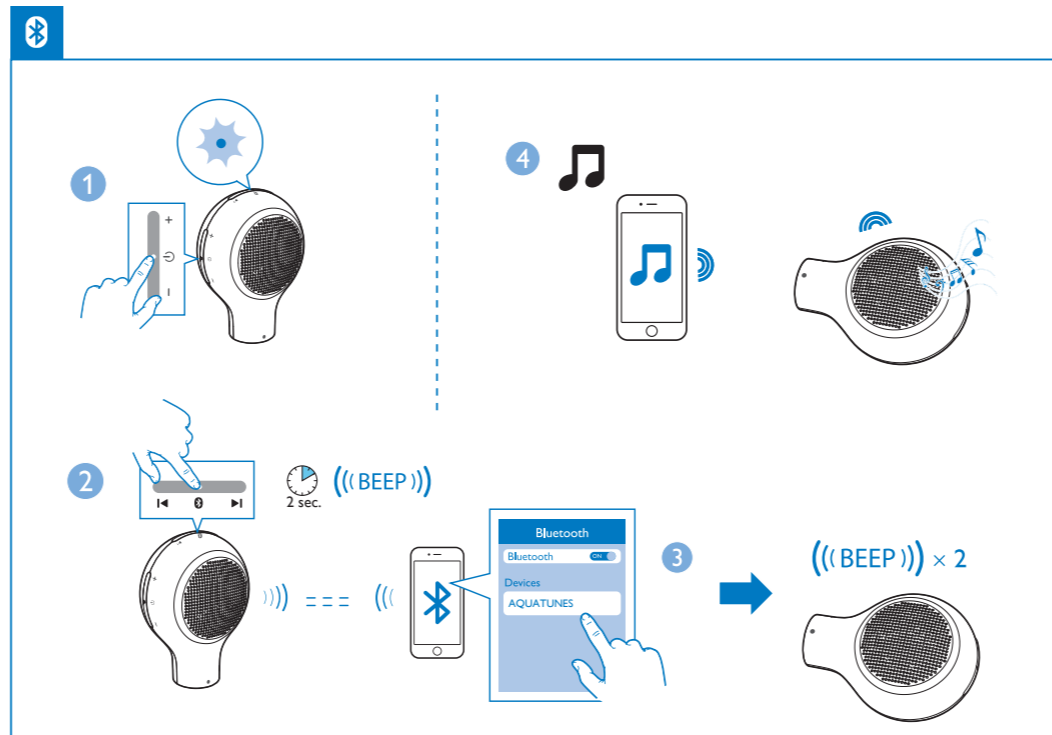
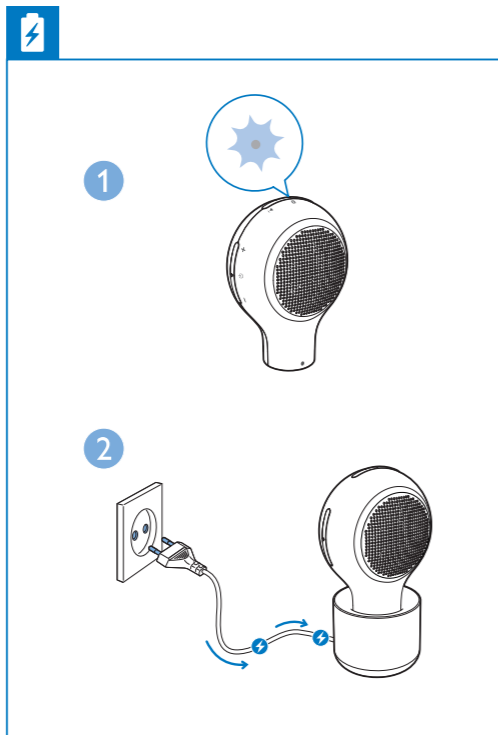
99.0485.031/ECN 232956/11.15

www.grohe.com

26271LV0
GS26G/05



Short User Manual



Specifications

Amplifier

Rated Output Power	2 W RMS
Frequency Response	350 -16000 Hz, ±3 dB
Signal to Noise Ratio	>70 dBA

Speakers

Speaker Impedance	3 ohm
Speaker Driver	4 cm full range
Sensitivity	>81dB/m/W±3dB/m/W

Bluetooth

Bluetooth Version	V3.0
Bluetooth Profile	HFP, HSP, A2DP
Bluetooth Frequency Band	2.4 GHz ~ 2.48 GHz
Bluetooth Range	10 m (Free space)

General information

Power Supply (wireless induction charging base)	AC 220-240V, 50/60 Hz
Built-in Battery	Li-polymer battery (3.7V, 500 mAh)
Dimensions - Main Unit (W x H x D)	111 x 85.6 x 59.5 mm
Weight - Main Unit	0.176 kg
- Charging base	0.252 kg

Important

- Read these instructions.
- Heed all warnings.
- Follow all instructions.
- The product may only be used in bathroom and shower. Do not use it in sauna or hot steam bath environment.
- Do not place the product near any heat sources such as radiators, heat registers, stoves, or other devices (including amplifiers) that produce heat.
- Only use attachments/accessories specified by the manufacturer.
- Do not place any sources of danger on the product, for example, lighted candles.
- Keep the product away from direct sunlight, naked flames or heat.
- During charging the battery, do not expose this product to any liquid.
- Batteries shall not be exposed to excessive heat such as sunshine, fire or the like.
- Where the plug of the charging base is used as the disconnect device, the disconnect device shall remain readily operable.
- Do not use charging base outdoors.
- The AC power plug of the charging base shall not be exposed to dripping or splashing.
- Do not place metallic objects, such as rings, on the top of charging base, as this may affect the charging process and may cause the charging base to overheat.
- Refer all servicing to qualified service personnel. Servicing is required when the product has been damaged in any way.

- Keep the charging base away from water.
- Do not place or store the charging base over or near water contained in a bathtub, washbasin, sink etc.
- Do not immerse the charging base in water or any other liquid.
- After cleaning, make sure the charging base is completely dry before you connect it to the mains.

Note

- The type plate is located on the bottom of the charging base.

Notice

Any changes or modifications made to this device that are not expressly approved by Grohe AG may void the user's authority to operate the equipment.
The speaker is designed to be waterproof in compliance with IEC60529 IPX6. The charging base (excluding AC power plug) complies with IEC60529 IPX7.

CE 0890

This product complies with the radio interference requirements of the European Community.

Declaration of conformity

Hereby, Grohe AG declares that this product is in compliance with the essential requirements and other relevant provisions of Directive 1999/5/EC. You can find the Declaration of Conformity on www.grohe.com.

Care of the environment

Disposal of your old product and battery
Your product is designed and manufactured with high quality materials and components, which can be recycled and reused.

This symbol on a product means that the product is covered by European Directive 2012/19/EU.



This symbol means that the product contains a built-in rechargeable battery covered by European Directive 2013/56/EU which cannot be disposed of with normal household waste. We strongly advise you to take your product to an official collection point or a Philips service centre to have a professional remove the rechargeable battery. Inform yourself about the local separate collection system for electrical and electronic products and rechargeable batteries. Follow local rules and never dispose of the product and rechargeable batteries with normal household waste. Correct disposal of old products and rechargeable batteries helps prevent negative consequences for the environment and human health.

Caution

- Removal of the built-in battery invalidates the warranty and may destroy the product.

Environmental information

All unnecessary packaging has been omitted. Your system consists of materials which can be recycled and reused if disassembled by a specialized company. Please observe the local regulations regarding the disposal of packaging materials, exhausted batteries and old equipment.

Trademark notice

The Bluetooth® word mark and logos are registered trademarks owned by Bluetooth SIG, Inc. and any use of such marks by Gibson Innovations Limited and Grohe AG is under license. Other trademarks and trade names are those of their respective owners.



About operating and storage temperatures

- Operate in a place where temperature is always between 0 and 40°C (32 to 104°F)
- Store in a place where temperature is always between -20 and 45°C (-4 to 113°F).
- Battery life may be shortened in low temperature conditions.

D
☎ +49 571 3989 333
impressum@grohe.de

A
☎ +43 1 68060
info-at@grohe.com

AUS
Argent Sydney
☎ +(02) 8394 5800
Argent Melbourne
☎ +(03) 9682 1231

B
☎ +32 16 230660
info.be@grohe.com

BG
☎ +359 2 9719959
grohe-bulgaria@grohe.com

CAU
☎ +90 412 497 09 74
info-az@grohe.com

CAN
☎ +1 888 6447643
info@grohe.ca

CH
☎ +41 448777300
info.ch@grohe.com

CN
☎ +86 21 63758878

CY
☎ +357 22 465200
info@grome.com

CZ
☎ +420 277 004 190
grohe-cz@grohe.com

DK
☎ +45 44 656800
grohe@grohe.dk

E
☎ +34 93 3368850
grohe@grohe.es

www.grohe.com
2014/03/21

EST
☎ +372 6616354
grohe@grohe.ee

F
☎ +33 1 49972900
marketing-fr@grohe.com

FIN
☎ +358 10 8201100
teknocalor@teknocalor.fi

GB
☎ +44 871 200 3414
info-uk@grohe.com

GR
☎ +30 210 2712908
nsapountzis@ath.forthnet.gr

H
☎ +36 1 2388045
info-hu@grohe.com

HK
☎ +852 2969 7067
info@grohe.hk

I
☎ +39 2 959401
info-it@grohe.com

IND
☎ +91 124 4933000
customercare.in@grohe.com

IS
☎ +82 2 559 0790
info-singapore@grohe.com

J
☎ +81 3 32989730
info@grohe.co.jp

KZ
☎ +7 727 311 07 39
info-cac@grohe.com

LT
☎ +372 6616354
grohe@grohe.ee

LV
☎ +372 6616354
grohe@grohe.ee

MAL
☎ +1 800 80 6570
info-singapore@grohe.com

N
☎ +47 22 072070
grohe.no@grohe.no

NL
☎ +31 79 3680133
vragen-nl@grohe.com

NZ
☎ +09/373 4324

P
☎ +351 234 629620
commercial-pt@grohe.com

PL
☎ +48 22 5432640
biuro@grohe.com.pl

RI
☎ +62 21 2358 4751
info-singapore@grohe.com

RO
☎ +40 21 2125050
info-ro@grohe.com

ROK
☎ +82 2 559 0790
info-singapore@grohe.com

RP
☎ +63 2 8041617

RUS
☎ +7 495 9819510
info@grohe.ru

S
☎ +46 771 141314
grohe@grohe.se

SGP
☎ +65 6 7385585
info-singapore@grohe.com

Pure Freude an Wasser



SK
☎ +420 277 004 190
grohe-cz@grohe.com

T
☎ +66 2610 3685
info-singapore@grohe.com

TR
☎ +90 216 441 23 70
GroheTurkey@grome.com

UA
☎ +38 44 5375273
info-ua@grohe.com

USA
☎ +1 800 4447643
us-customer-service@grohe.com

VN
☎ +84 8 5413 6840
info-singapore@grohe.com

AL BIH HR KS
☎ +357 22 465200
info@grome.com

ME MK SLO SRB
☎ +385 1 2911470
adria-hr@grohe.com

Eastern Mediterranean, Middle East - Africa Area Sales Office:
☎ +357 22 465200
info@grome.com

IR OM UAE YEM
☎ +971 4 3318070
grohedubai@grome.com

Far East Area Sales Office:
☎ +65 6311 3600
info@grohe.com.sg



This product is manufactured by Gibson Innovations Ltd. for Grohe AG. Grohe AG is the warrantor in relation to the product.

