



**This product is suitable for installation in zones:
1, 2 & Outside Zones**

All installations must comply with guidelines which are based on a zonal concept. The diagram above illustrates this concept and must be followed to ensure the safe installation of electrical appliances in the bathroom. These regulations apply to domestic installations only. Installations must be made in accordance with the current IEE wiring regulations and relevant building regulations. **HiB recommends that all electrical bathroom products should only be fitted by a suitably qualified, Part P registered electrician.**

Calibre Round Showerlight

Cool White LED Showerlight Art No. 5970

Warm White LED Showerlight Art no. 5980

Calibre Square Showerlight

Cool White LED Showerlight Art No. 5950

Warm White LED Showerlight Art no. 5960

Thank you for purchasing this HiB product.

Please read through these instructions carefully and refer back to them during installation to ensure that your product is fitted safely and that it retains its high quality finish.

Please retain this leaflet for future reference.

Before drilling, ensure there are no hidden cables or pipes in the ceiling.

Operation Instructions

This product is dimmable with a standard "Triac Dimmers". It is recommended that you only use the endorsed dimmer brands. Please contact HiB customer services for further information.

Care Instructions

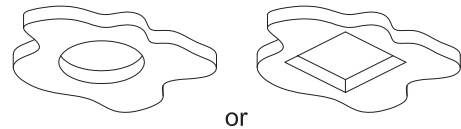
Do not use abrasives or solvents when cleaning this product

Aftercare Service

In the unlikely event that this product should fail please contact HiB customer services, contact details shown below.

Installation

1. Position the LED Showerlight in a suitable location (according to the zonal diagram opposite - Fig. 1), ensuring that the domestic electrical mains supply is within reach of the electrical entry point of the product. Ensure that the fitting is between joists.
2. Make a standard installation hole as required in the ceiling. Please take care when drilling the hole that there are no concealed pipes or cables that may become damaged. Please note a void depth of 80mm is required.



or

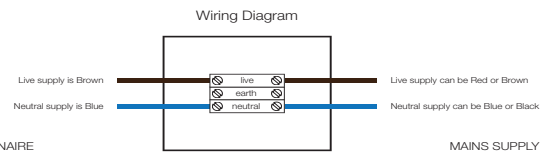


Cut-Out
Ø75mm

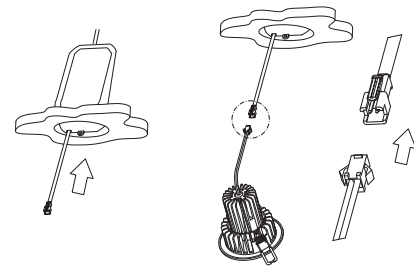


Cut-Out
75mm
Square

3. Ensure the domestic electrical mains supply to which the ceiling light is being connected is turned off. Connect the domestic mains supply to the terminal box according to the wiring diagram below.

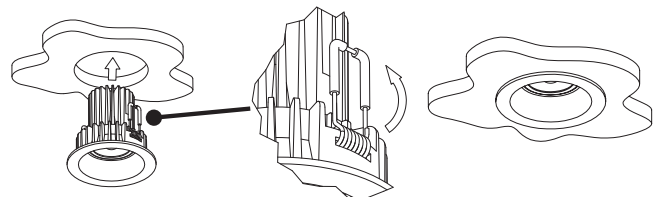


4. First push the driver through the hole into the ceiling. Ensure that there are no loose strands protruding from the terminal blocks and that the insulating cover is securely in place.



5. Push back the springs and push the lamp into the hole to fix in place. Please note the light fixture & driver must not be covered with insulating material. **There should be 100mm of free space around the light fixture in all directions.**

6. The springs will fall back to hold the lamp in place into the ceiling.



7. Switch back on the domestic electrical mains supply to which the light is being connected.



WEEE compliance

Must not be mixed with general household waste