

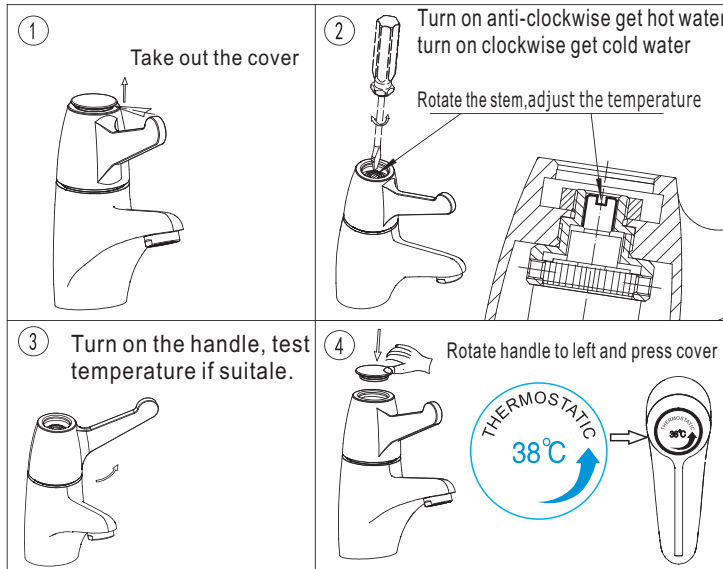
# Thermostatic Basin Tap Instruction



## Installation Notice:

1. This product is thermostatic tap, only one temperature water out. It's setted 38°C in factory, any other temperature required, check below diagram to adjust. The tap is worked between water pressure 0.5 to 5 bar, water temperature 0-65°C.
2. Flush pipes to get rid of any debris blocked in pipes before installation.
3. After installation, turn all the joints to make sure they are firmly connected. Then turn water on and off repeatedly to ensure there are no leaks around the joints then the product can be used normally at this stage.

**Note:** Please follow below steps for adjust the water temperature.



Victorian Plumbing

Diamond House, 41, Stephenson Way, Formby Business Park, Formby, England, L37 8EG

Tel: 0044 800 862 0878

Website: [www.victorianplumbing.co.uk](http://www.victorianplumbing.co.uk)

Turn on anti-clockwise to get water

**Note:** Max angle to turn is 90 degree

