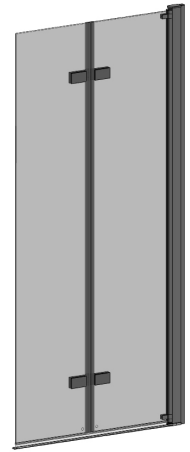
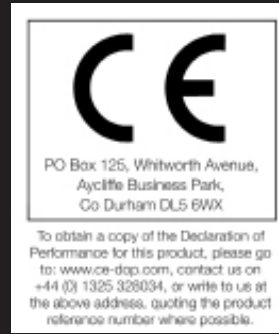


Wet Room Panel

Instruction Manual

N2VC



IMPORTANT INFORMATION

Be aware toughened glass can shatter if not handled correctly. It should not be subjected to any sharp impact and it is essential to protect the glass by resting it on a soft protective surface during installation such as cardboard or carpeting. It is recommended to wear PPE at all times during installation.



PRE-INSTALLATION CHECKS

1. Check you have the correct product. Please look at the labels on the side of the product packaging.
2. Check all the product components are in the box and the fixing kits.
3. Unpack your product and handle it with care.
4. Please check the product for defects or damage, once the installation has commenced we cannot accept responsibility for any defects or damage.
5. Please take time to read these instructions prior to installing your product.
6. Before you commence any drilling check there are no hidden electrical cables and/or water pipes.
7. No attempt should be made to re-work the toughened safety glass.
8. The installation of the product should be performed by two persons.
9. It is strongly recommended that the walls the product is going to be installed on are vertical.
10. It is strongly recommended the product is fitted on a tiled surface or similar waterproof surface.
11. It is strongly recommended the walls are tiled and grouted before the product is installed.
12. If the walls and/or the tray are not level you will not achieve maximum adjustment of the product.
13. Pictures used are for illustration purposes only, product designs may alter slightly as a result of continuing product development.
14. We do not stipulate where the European Standard Kite Mark should be positioned on the glass when being factory assembled.
15. Please note that some natural misting may occur when you remove this product from its packaging, due to the addition of the glass protection pre-coating. If this does occur this can easily be removed with a soft, dry cloth.

Equipment Check List: Not Supplied

Description
Electric / Battery Drill
Screwdrivers
Sealant Gun
Bathroom Sealant
Spirit Level
6mm Masonry Drill Bit
Tape Measure
Pencil
Stanley Knife / Snips

Fixing Kit Components

Description	Quantity
2.5mm Drill Bit	1
Wall Plugs	3
40mm screws	3
9mm Screws	5
Top Cap	1
3mm Allen Key	1
4mm Allen Key	1
Door Setting Block	2
Branding Badge	1

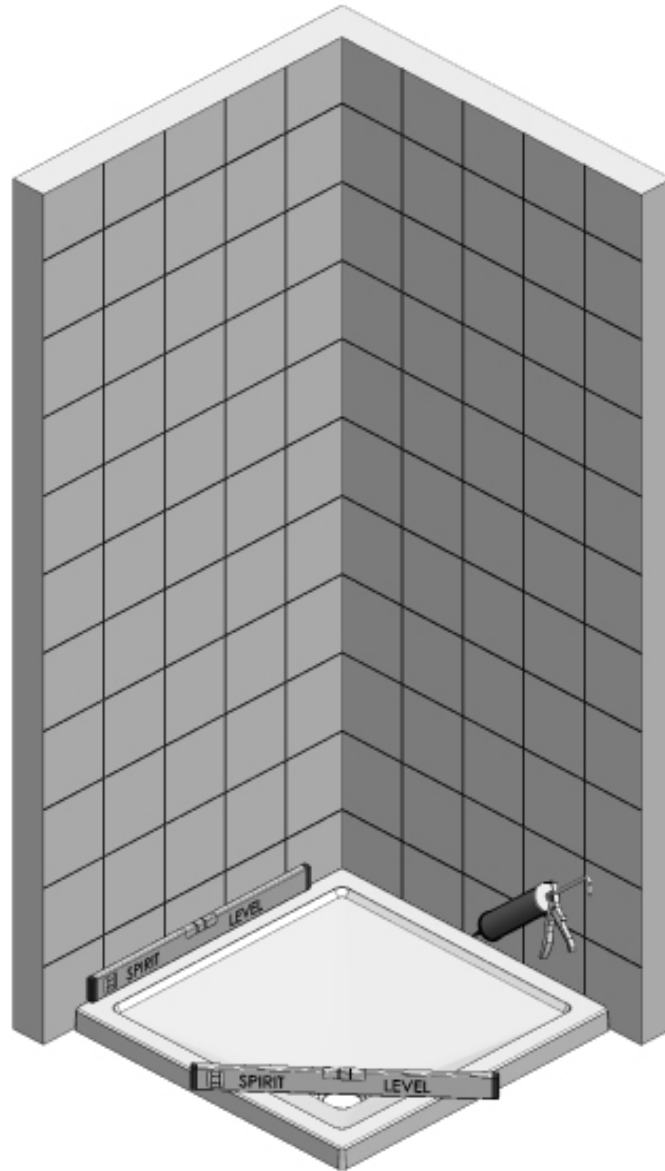
Component Check List: Supplied

Description	Quantity
Wall Profile	1
Panel Assembly	1
Screw Cover with Adhesive Tape	1
Dam Mouldings (Left and Right Hand)	1 of each
Bottom Rail	1
Bottom Rail End Cap	1
Bottom Seal	1

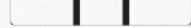
CONSUMER GUARANTEE

Please make sure the purchaser/end user completes and returns the guarantee card which is enclosed with this product. Failure to validate the Guarantee will mean only the 1 Year Statutory Guarantee will apply.

Step 1 - Pre-Installation Checks and Tray Sizes



SPIRIT

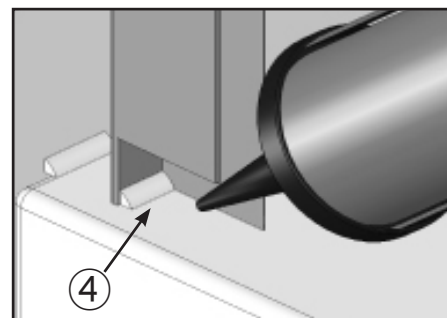
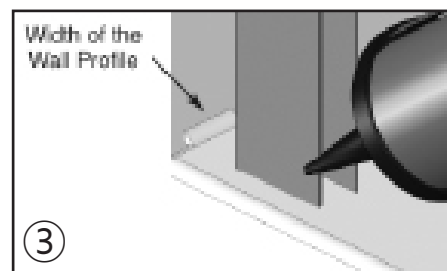
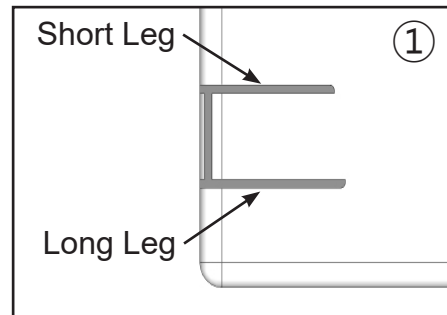
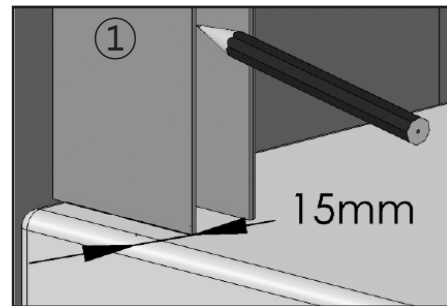
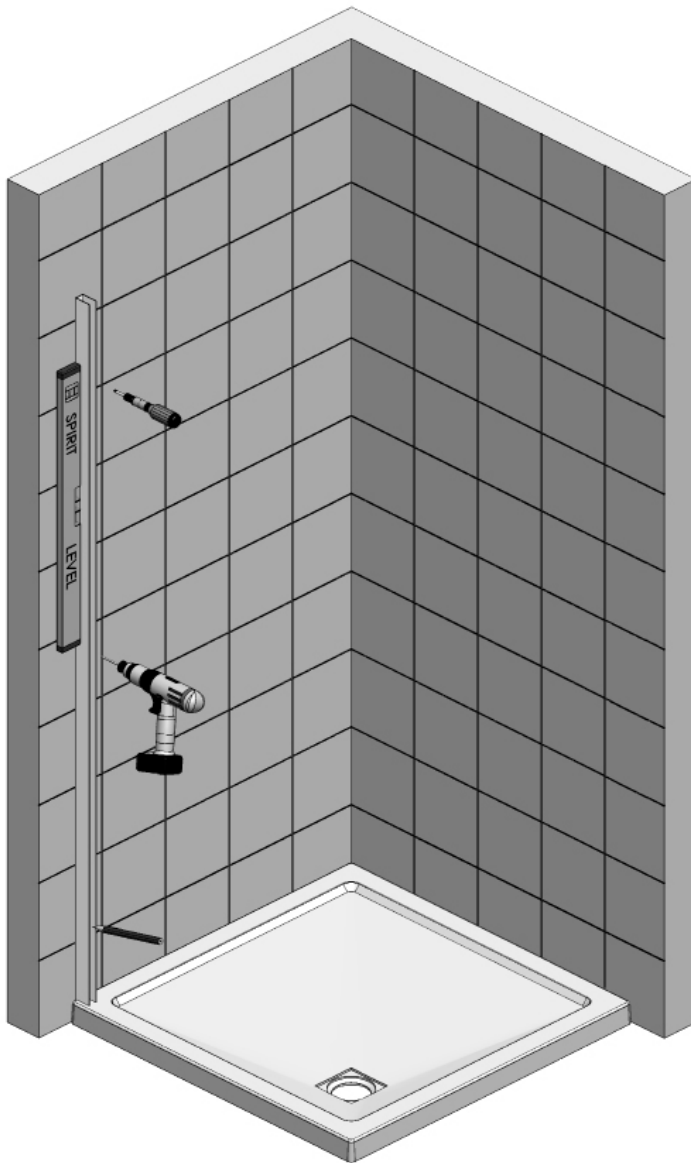


LEVEL

1. Check the tray is level on all sides (the bubble on the spirit level must be in the centre of the 2 lines).
 2. Stand in the tray and check that there is no adverse movement (correct if necessary).
 3. The walls should be tiled and grouted up to the tray.
 4. The tiles and the tray should be sealed using a good quality bathroom sealant.
- **Spray the seal and joints with the shower head and check for leaks when the silicon has cured.**
 - **Check the plumbing for leaks.**
 - **DO NOT plasterboard over the tray.**
 - **DO NOT grout the tiles when the enclosure has been fitted, the grout may discolour the aluminium profiles.**
 - **Make sure the tray is installed as per the manufacturer's instructions.**
 - **When all of the above has been completed please proceed to the Step 2.**

Step 2 - Fitting the Wall Profile

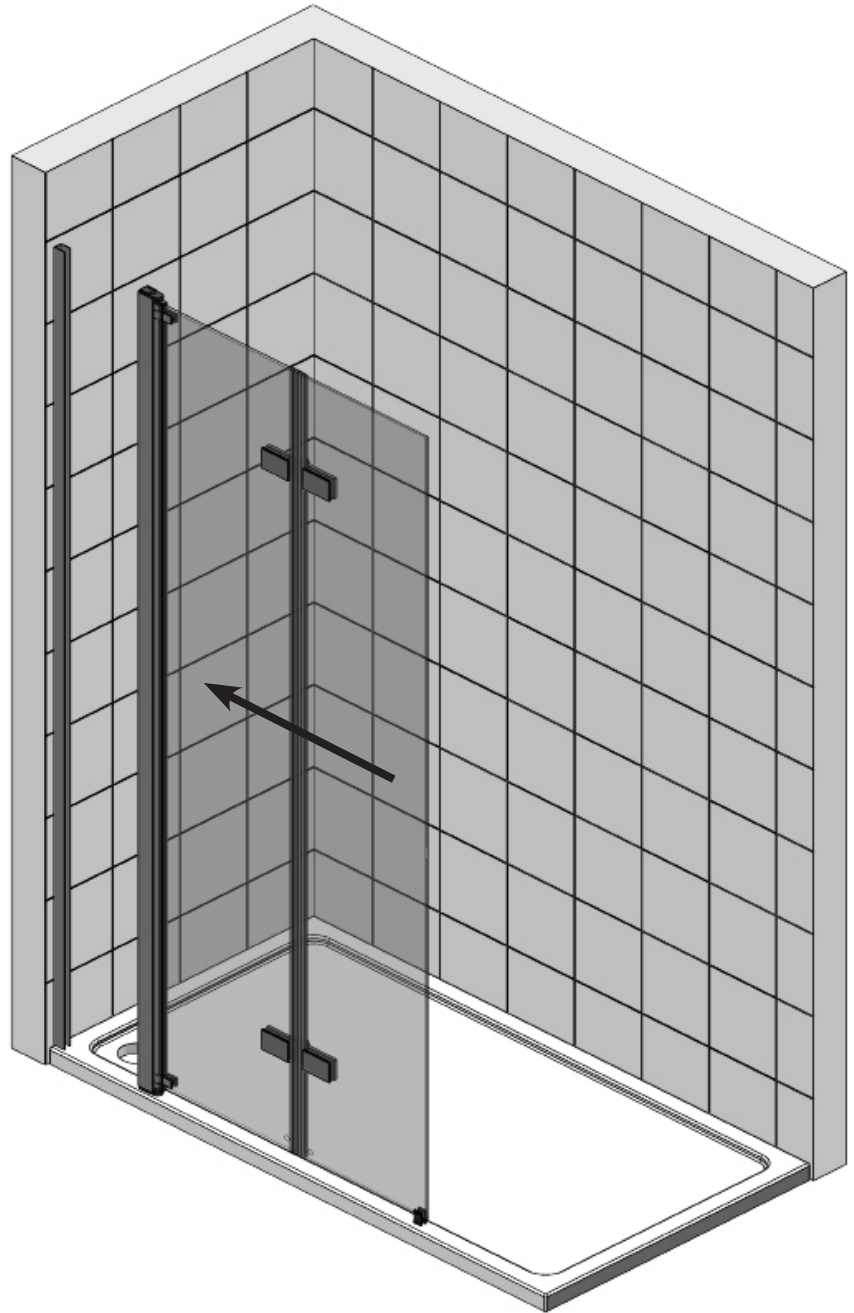
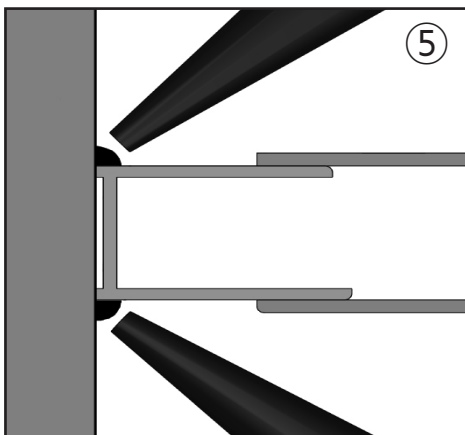
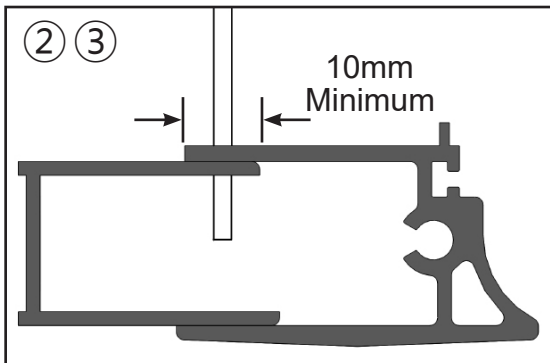
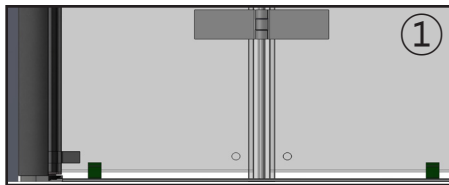
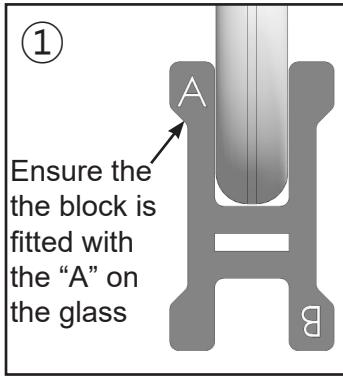
IMPORTANT: This product features two different length Wall Profiles. See notes below.



1. Place the Wall Profile 15mm in from the outside of the tray. The longer leg of the Wall Profile must be on the outside of the enclosure, towards the front of the tray. Make sure the Wall Profile is completely vertical using a spirit level and mark the wall through the slots with a pencil.
2. Drill the wall with a 6mm Masonry Drill Bit (not supplied) where the Wall Profile is to be positioned. Fit the Wall Plugs supplied (if going in to a brick or block wall). If going into a plasterboard wall you will need to purchase appropriate wall fixings. Wipe clear all debris from the Tray before referring to the next stage.
3. Where the Wall Profile is to be positioned on the Tray, place a bead of Bathroom Sealant (not supplied) the width of the Wall Profile along the tiled wall. Screw the Wall Profile to the wall with 40mm Screws (supplied). Do not over tighten the screws into the Wall Profile as this will misshape the Wall Profile. Ensure the Wall Profile stays completely vertical throughout this procedure using a Spirit Level.
 - **Failure to carry out this procedure correctly can result in serious water damage and is not covered by the Guarantee.**
 - **No sealant to be present between the Wall Profiles and the tiled walls vertically prior to screw fixing.**
4. Seal the gap on the inside between the Tray and Wall Profile with a Bathroom Sealant (not supplied).
 - **Failure to carry out this procedure correctly can result in serious water damage and is not covered by the Guarantee.**

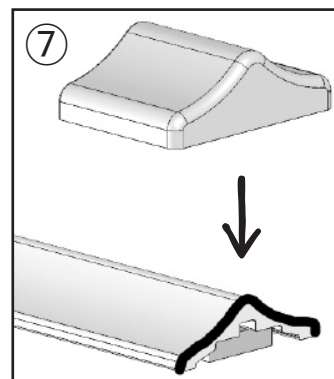
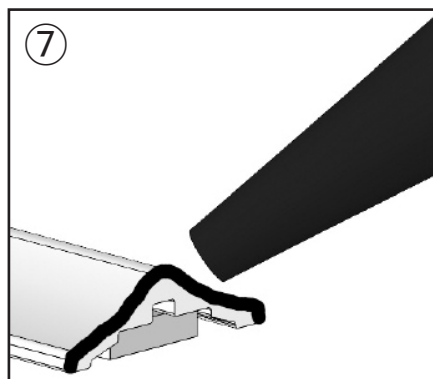
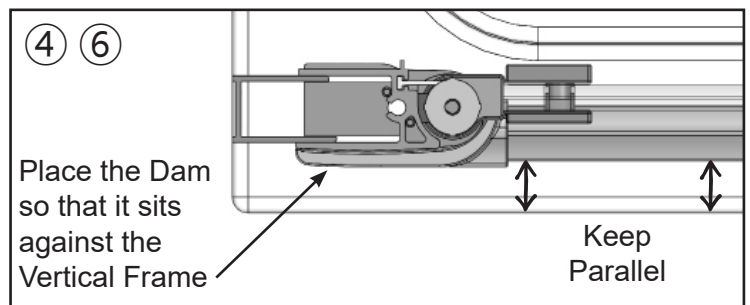
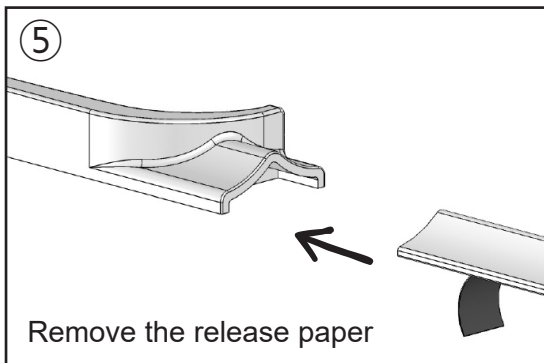
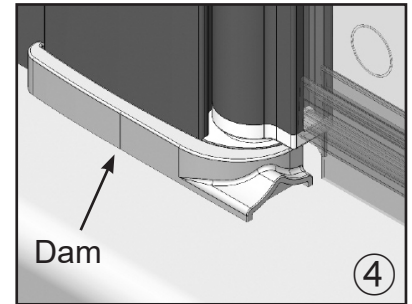
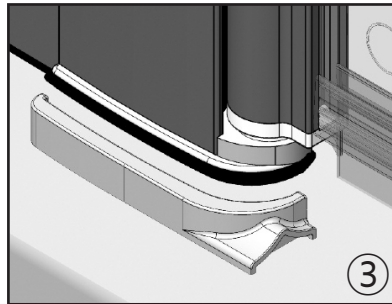
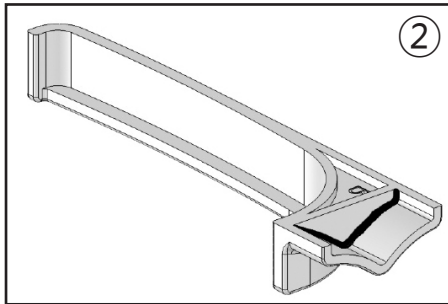
Step 3 - Fixing the Panel to the Wall Profile

NOTE: 2 people will be required to carry out these operations. Some parts are hidden for clarity reasons.



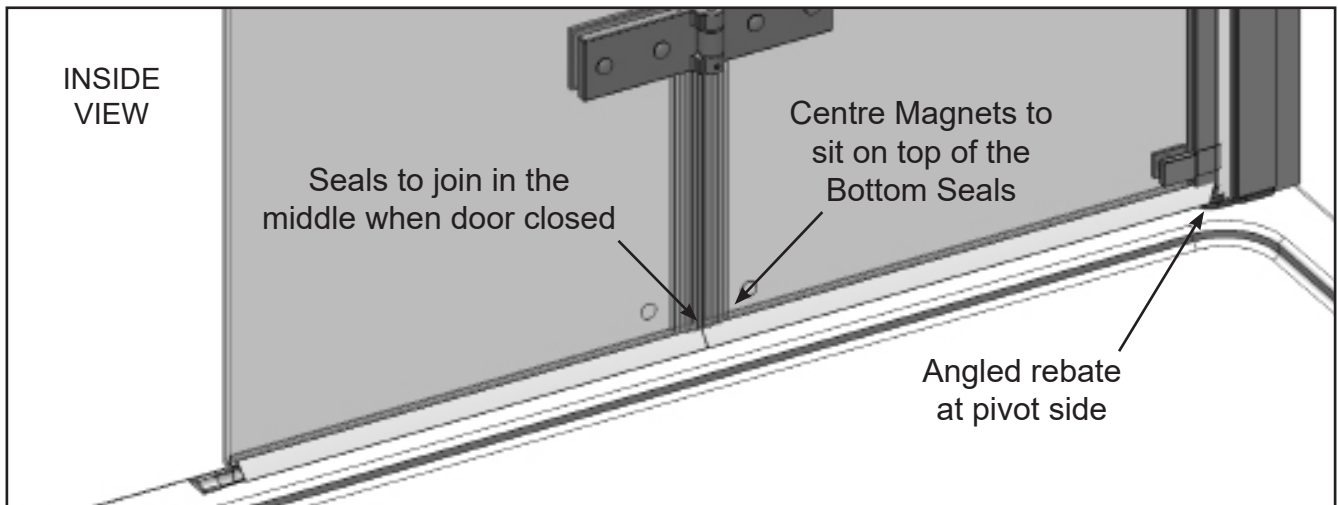
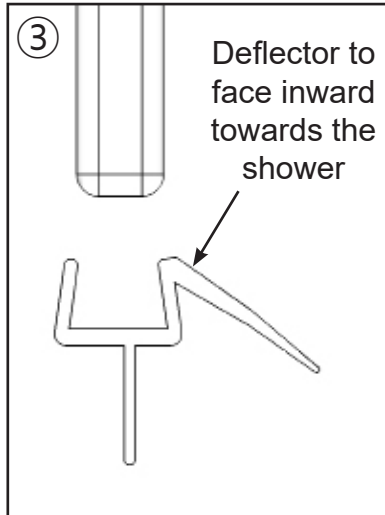
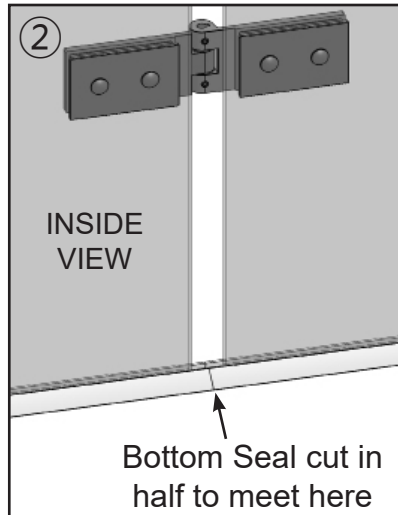
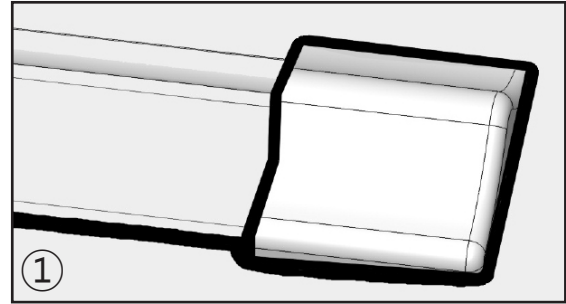
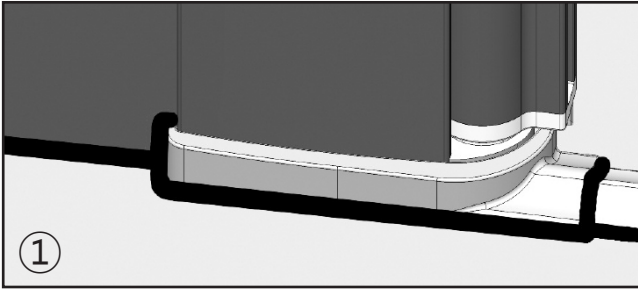
1. Place the Setting Blocks onto the bottom of the Panel Glass, ensuring the end marked "A" is on the glass.
2. Carefully lift the Panel Assembly over the Wall Profile and carefully push it until it is fully home, there must be a minimum of 10mm for fixing.
3. On the inside of the enclosure, with the 2.5mm drill bit (supplied), drill a hole into the Vertical Frame and Wall Profile approximately 100mm from the top and bottom and one in the centre. Drill 2 holes between these (5 holes in total).
 - **Ensure the Panel is completely vertical (the bubble on the Spirit Level must be in the centre of the 2 lines).**
4. Fasten the Panel to the Wall Profile using the 9mm screws supplied.
5. Seal the Wall Profile vertically top to bottom, both internally and externally where it meets the tiles.
IMPORTANT: Failure to carry out this stage may result in serious water damage and is not covered under the terms of the guarantee.
 - **Allow 24 hours for the sealant to fully cure prior to using the shower.**
6. Remove the setting blocks from the bottom of the door.

Step 4 - Fitting the Dam and the Bottom Rail



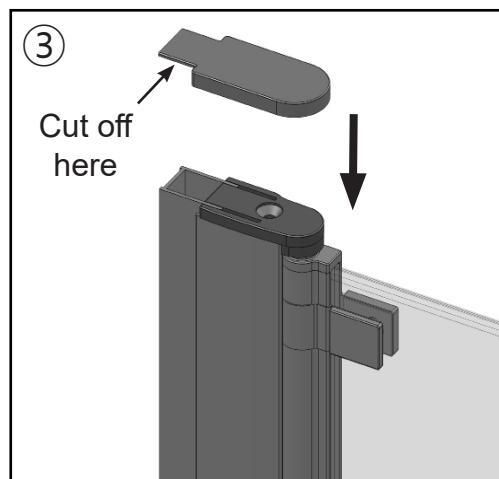
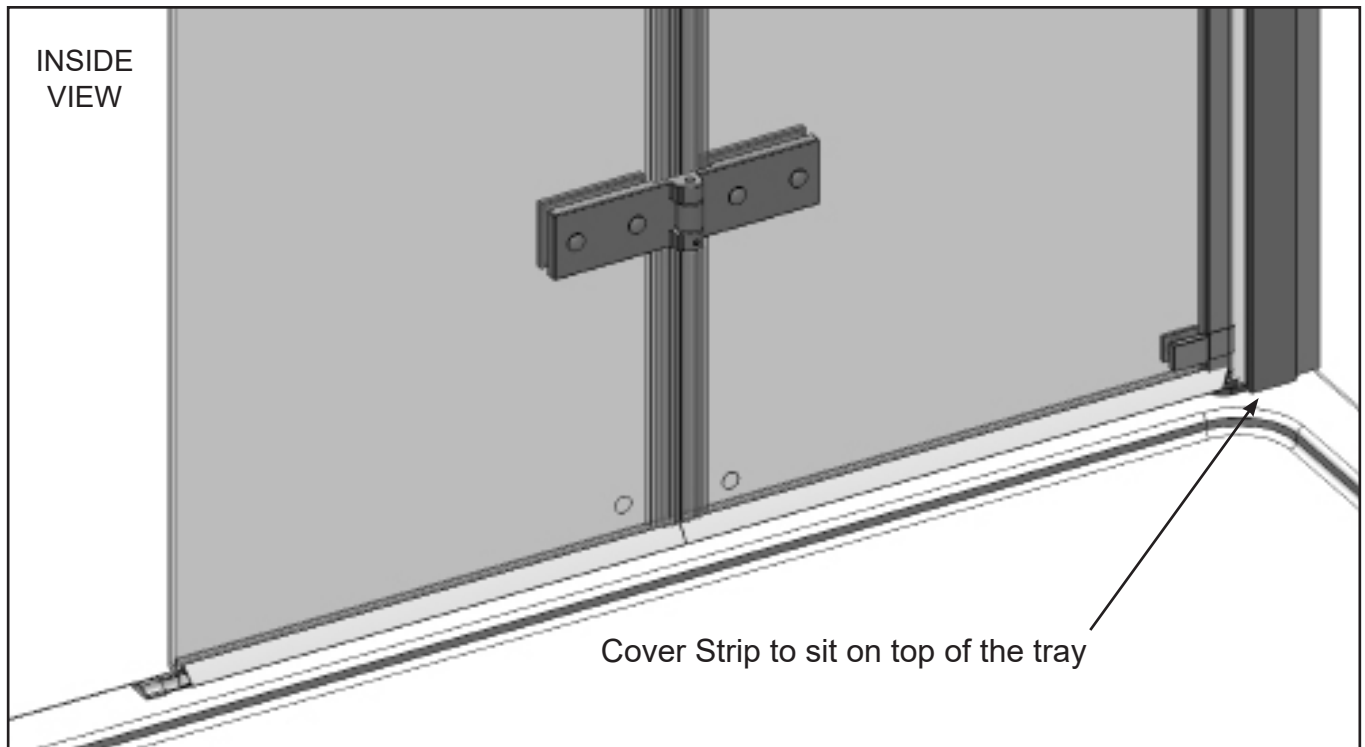
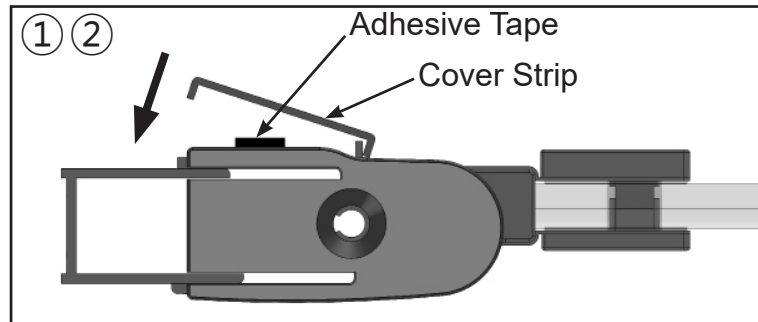
1. Choose the correct Dam for your installation and discard the other.
2. Turn the Dam upside down and add a small amount of sealant on the inside edge (see image).
3. Seal the base of the pivot section to the Tray Top as shown in the image above.
4. Position the Dam against the Vertical Frame at the pivoting side of the door and gently press into the sealant just applied.
 - **IMPORTANT: The Dam must be fitted before the pre-applied sealant starts to cure.**
5. Remove the release paper from the back of the adhesive tape (which is on the underside of the Bottom Rail) and place the Rail inside the Dam at the pivot side of the door.
6. Press the Rail down onto the top of the tray ensuring that it is kept parallel to the outside edge of the tray and that the Dam remains in position.
 - **Make sure the top of the tray is clean and free from any contaminants before applying the Rail.**
7. On the Bottom Rail (at the opposite end to the wall) apply a small bead of sealant to the top edge. Carefully but firmly place the End Cap in place.
 - **Be careful not to move the Bottom Rail and Dam.**

Step 5 - Fitting Seals and Sealing



1. Seal the base of the enclosure to the top of the tray on the outside only making sure that you seal around the Dam and End Cap as shown. Seal the Dam vertically where it meets the Vertical Frame.
 - **IMPORTANT: Failure to carry out stage 1 may result in serious water damage and is not covered under the terms of the guarantee.**
 - **DO NOT seal the base of the product to the inside, failure to comply may result in the product leaking.**
 - **Allow 24 hours for the sealant to fully cure prior to using the shower.**
2. Cut the Bottom Seal in half using snips to get two Seals. Measure between the Pivot Tube and where the Centre Magnets meet and cut one Bottom Seal to this length. Do the same for the other Bottom Seal, measuring between the edge of the glass and where the Magnets meet.
 - **Make sure the rebate end of the seal is kept for the pivot side of the door.**
 - **If the Seal drags over the Bottom Rail, the door may need raising at the magnet side. Unscrew the top 3-4 door fixing screws, raise the door, re-drill and re-fix.**
3. Remove the Magnets from the Door Glass. Fit the Bottom Seals to the Door Glass and put the Magnets back on the Door Glass. Ensure the Magnets sit on top of the Bottom Seals. Trim the Magnets so they are level with the top of the glass.
4. Ensure the Magnets locate fully from top to bottom when the door is closed. They can be knocked towards each other using a wooden batton.

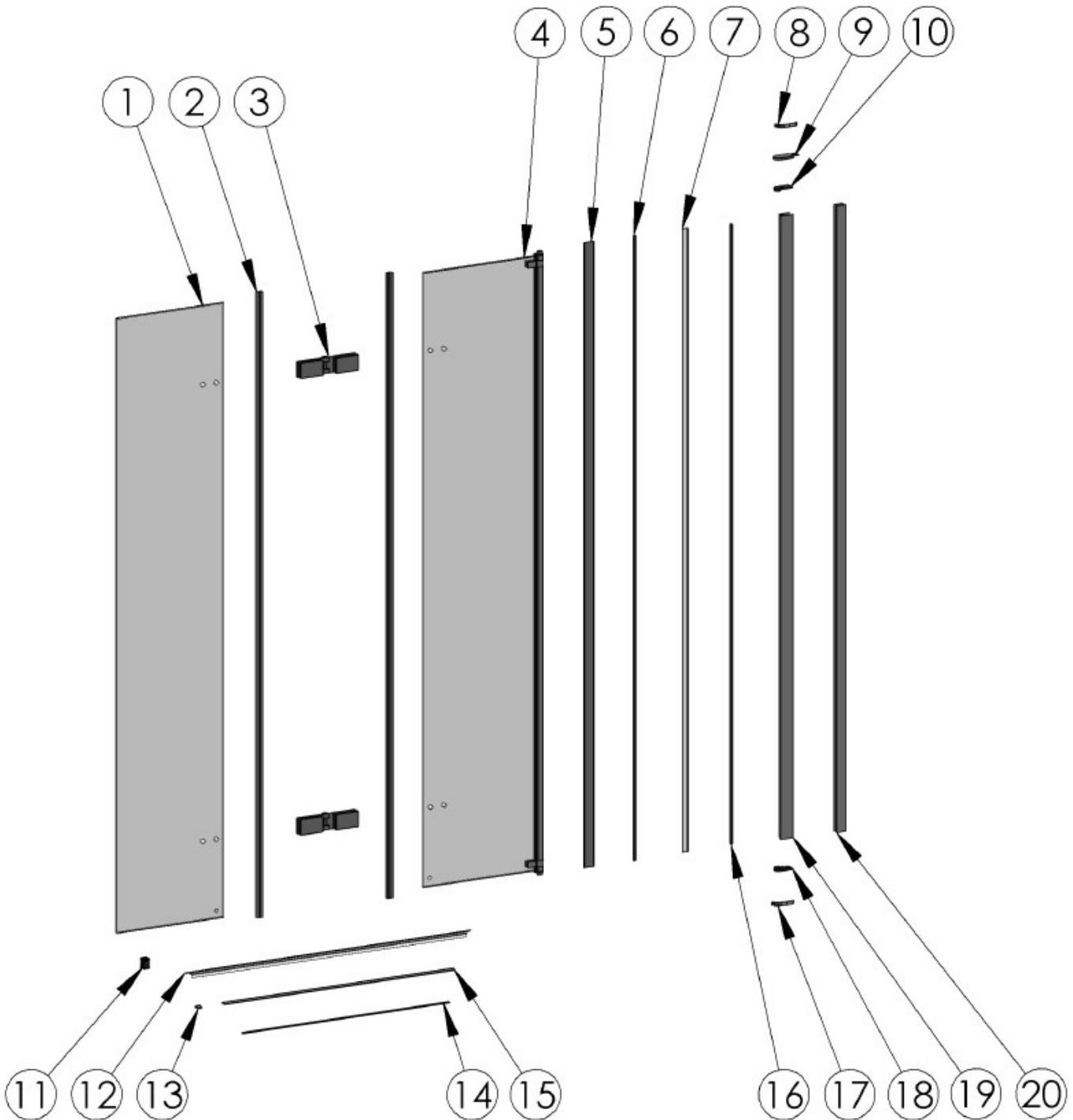
Step 6 - Fitting Screw Cover and Cap



1. Remove the release paper from the Adhesive Tape supplied and place the Tape on the face of the Vertical Door Frame, ensuring the Tape is positioned to one side of the screw heads.
2. Place one side of the Cover Strip over the leg on the Vertical Frame and press firmly to stick the Cover Strip to the Frame.
 - **The Cover Strip should sit on top of the tray.**
3. The Top Cap has grooves and can be shortened by cutting along these grooves using scissors or snips (adding a small amount of sealant will help keep the cap in place).
4. Place the Branding Badge in a prominent position on a none moving part of aluminium.

Spare Parts

If you need to replace any damaged parts please see illustration below for parts list then call Customer Relations on 01325 328033



Part No.	Description	Qty	Part No.	Description	Qty	Part No.	Description	Qty
1	Folding Panel Glass	1	11	Setting Block	2	21		
2	Magnet Seal	2	12	Bottom Seal	1	22		
3	Hinge Assembly	2	13	End Cap	1	23		
4	Pivoting Panel Assembly	1	14	Bottom Rail Adhesive Tape	1	24		
5	Screw Cover	1	15	Bottom Rail	1	25		
6	Screw Cover Adhesive Tape	1	16	Linear Seal	1	26		
7	Tube Seal	1	17	Dam (Right Hand)	1	27		
8	Dam (Left Hand)	1	18	Pivot Cap (Right Hand)	1	28		
9	Top Cap	1	19	Vertical Frame	1	29		
10	Pivot Cap (Left Hand)	1	20	Wall Profile	1	30		

TROUBLE SHOOTING GUIDE

Problem	Solution
Leaking	<ol style="list-style-type: none">1. Check that the inside gap between the Tray and Wall Profile has been sealed correctly.2. Ensure the tray is sealed along the tiled walls prior to installation.3. Ensure the Wall Profile is sealed vertically inside and outside.4. Ensure the joint between the enclosure and tray top is sealed.5. The deflector on the Bottom Seals is semi rigid and can be carefully altered to offer more deflection of the water.6. Check the Magnet Seals are locating and there are no gaps. <p>Important: This enclosure should be water tested conforming to BS EN 14428</p>
Enclosure Alignment on the Tray	<ol style="list-style-type: none">1. Is the enclosure fitted onto a tiled wall?2. Is the Wall Profile fitted 15mm from the outside edge of the tray?3. Is the Wall Profile completely vertical?
Panel not operating correctly	<ol style="list-style-type: none">1. Ensure the Wall Profile is completely vertical.2. Ensure the tray is completely level.

Some important information to help you Maintain your product.

The following information is all you need to keep your product looking new.

Clean your product using a mild detergent diluted in water and then polished off using a soft cloth. If you live in a hard water area, periodically clean your product using a 50/50 solution of white vinegar and water. The solution should be left on the enclosure for approximately 5 minutes then rinsed off using warm water. This method of cleaning should remove lime scale residue.

Simple Maintenance

Our products are generally maintenance free, however it may be necessary to lubricate wheel assemblies and other moving parts from time to time.

It is strongly recommended that a quality silicone spray is used.

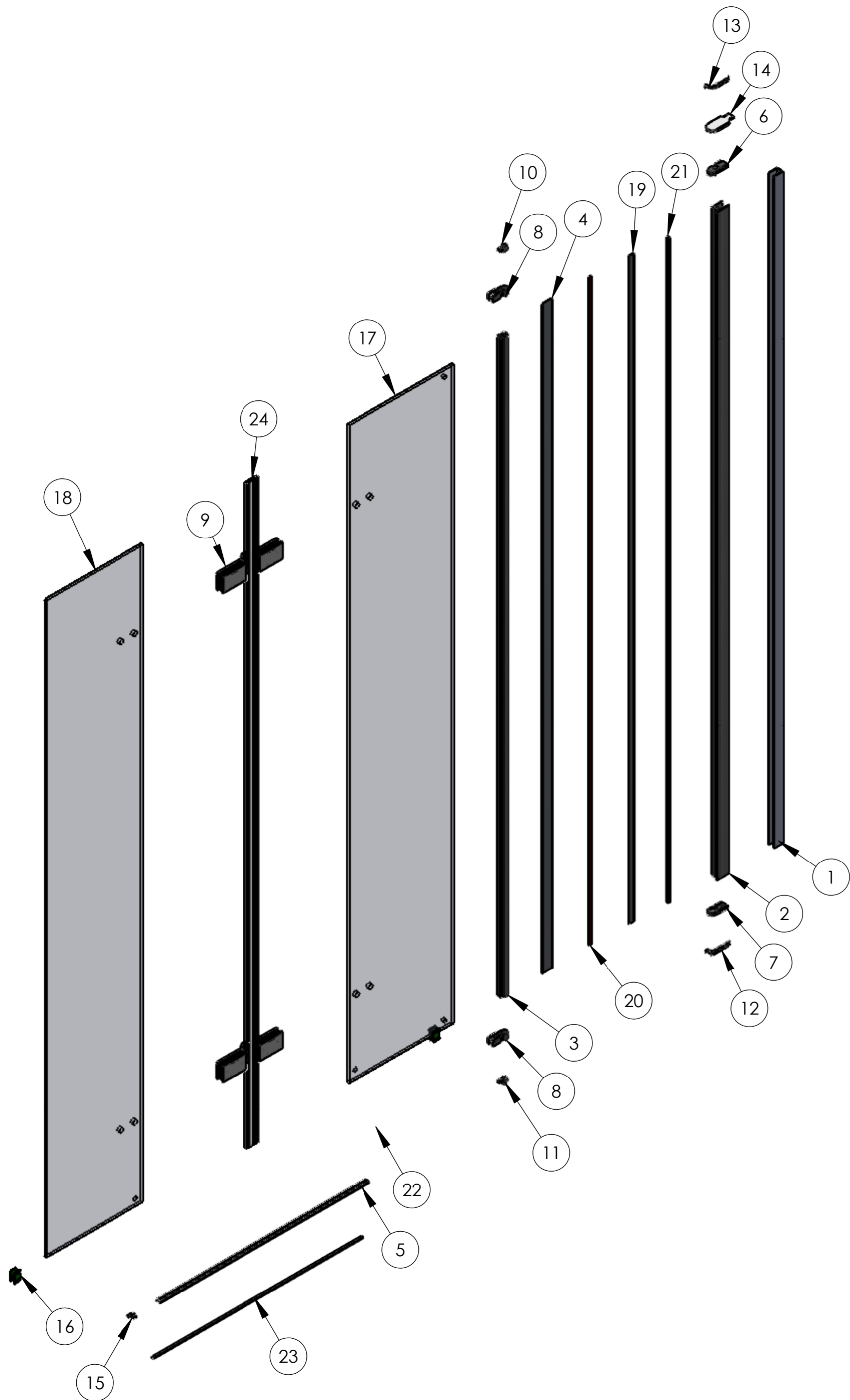
A list of Don'ts:

1. Don't use acidic based products which are unsuitable for cleaning enamel surfaces.
2. Don't use abrasive cleaners or cleaners using bleach or solvents, these products will adversely affect the finish of the aluminium profiles.
3. Don't use scouring pads, powder or any sharp instruments when cleaning the enclosure.

Should you experience any problems during installation please refer to the Trouble Shooting Guide or contact Customer Relations on:

+44 (0) 1325 328033

To enable customer relations to provide you with an excellent level of service it is important that you quote your product Code and Reference Number - these can be found on the Guarantee card.



ITEM NO.	PART NUMBER	COLOUR	DESCRIPTION	LENGTH	QTY.
1	RL8012#	Various	Wall Profile	1967mm	1
2	RL8014#	Various	Main Vertical	1957mm	1
3	RL8003#	Various	8mm Pivot Tube	1933	1
4	RL8017#	Various	Cover Plate	1962mm	1
5	RL8010#	Various	Tray Top Extrusion	709mm	1
6	RMC0403#	Various	Pivot Cap (Left Hand)		1
7	RMC0402#	Various	Pivot Cap (Right Hand)		1
8	RMC0398#	Various	Pivot Tube Clamp		2
9	RMC0404#	Various	Dual Bathscreen Hinge		2
10	RIM0249#	Various	Tube Cap (L-Hand)		1
11	RIM0250#	Various	Tube Cap (R-Hand)		1
12	RIM0459#	Various	Dam (R-Hand)		1
13	RIM0460#	Various	Dam (L-Hand)		1
14	RIM0463#	Various	Pivot Top Cap		1
15	RIM0246#	Various	End Cap		1
16	RIM0402	Green	Setting Block		2
17	RGT0552	Clear	Innov8 Wetroom Pivoting Panel Glass	1933 x 353.50 x 8mm	1
18	RGT0551	Clear	Innov8 Wetroom Hinged Panel Glass	1933 x 327.50 x 8mm	1
19	RG0384	Clear	Tube Seal	1957mm	1
20	RG0419	White	Double-Sided Foam Tape 3 x 9mm	1957	1
21	RG0023	Grey	Linear Vertical Seal	1947	1
22	RG0405	Clear	Bottom Seal	1000	1
23	RG0228	White	Adhesive Strip	709mm	1
24	RSMP0007	Clear	Innov8 Angled Magnet Pair	1950	1

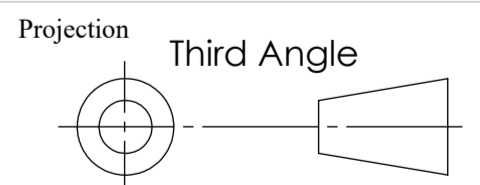
ROMAN

Whitworth Avenue, Aycliffe Industrial Estate,
 Newton Aycliffe, Co. Durham, England.
 DL5 6YN
 www.roman-showers.com
 Tel:- +44 (0)1325 311318 Fax:- +44 (0)1325 319889

General information

©ROMAN LIMITED
 The information contained hereon
 may not be copied in whole or part
 without prior written consent

Drawing detail



Part number N2VC813#

Description
 Innov8 800 Corner
 Bi-fold Panel

Scale
 Sheet 1 of 1 A2

1	BOM	R.Morton		15.09.20	
Rev No.	Description	Sign	Checked	Date	ECR No.