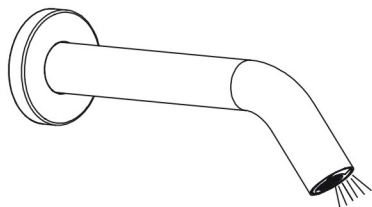


# Installation and operation instruction victorian plumbing.co.uk

## Product parameters:

Power	DC6V section No.5 alkaline battery
Power Consumption In Static	≤ 0.5 mw
Inductive Distance	8 ~ 12 cm
Suggest Water Pressure	0.5 ~ 5 Bar
Ambient Temperature	0.1 ~ 45°C
Water Temperature	0 ~ 70°C
Supply Pipe Size	G1/2"



## Operation Notice:

1. The following situation may occur filter impurities accumulation.
2. The product is used between water pressure 0.5-5Bar, water temperature 0-70°C.
3. Regularly clean the surface of faucet in neutral wash solution. then dry it with a piece of soft cotton cloth to keep it bright.
4. Alkaline battery 1.5V No.5 used.

## Installing steps (Figure II).

1. Embedded plastic elbow and straight pipe in the wall, then decorate the wall (Notice to leave 2-φ36 holes in the wall of plastic elbow) (Figure I ).
2. Screw out ④ Decorative covers from the ① Flange, then pull into the head of ⑤ Tap body.
3. Insert ⑥ ⑦ into the wall pre-assembly hole, put ① Flange against the wall, Marking three mounting hole, then use electric drill to make three holes, last knock three plastic expansion screw into the hole.
4. Use ③ Ss304 tapping screw to fix the flange on the wall by the cross screwdriver, then screw the ④ Decorative covers to the ① Flange.
5. Open the power box and load 4pcs Alkaline Batteries (use prepare battery) .
6. Make two holes below the basin by electric drill in suitable place, then knock two plastic expansion of 14size into the wall, use ⑭ SS304 tapping screw to fix ⑬ Plastic fixed shelf on the wall.
7. Connect ⑧ power output plug to ⑥ Power output socket, screw tighten with ⑨ Plastic nut.
8. Connect ⑪ G1/2" Inlet pipe of one side to ⑦ G1/2" Inlet pipe, the other side connect to the ⑫ Controller box outlet.
9. Connect ⑩ G1/2" Inlet pipe of one side to ⑫ Controller box inlet, the other side connect to the inlet valve, last insert the ⑫ Controller on ⑬ Plastic fixed shelf.
10. Turn on water to check, check all the joints to make sure there is no leaks.

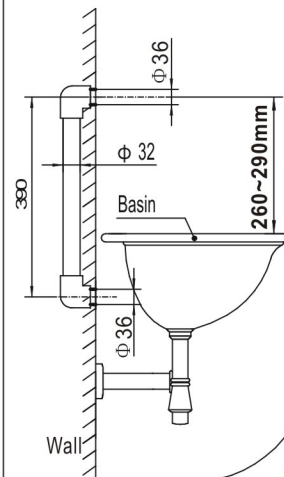
Victorian Plumbing

Diamond House. 41, Stephenson Way. Formby Business Park Formby. England. L37 8EG

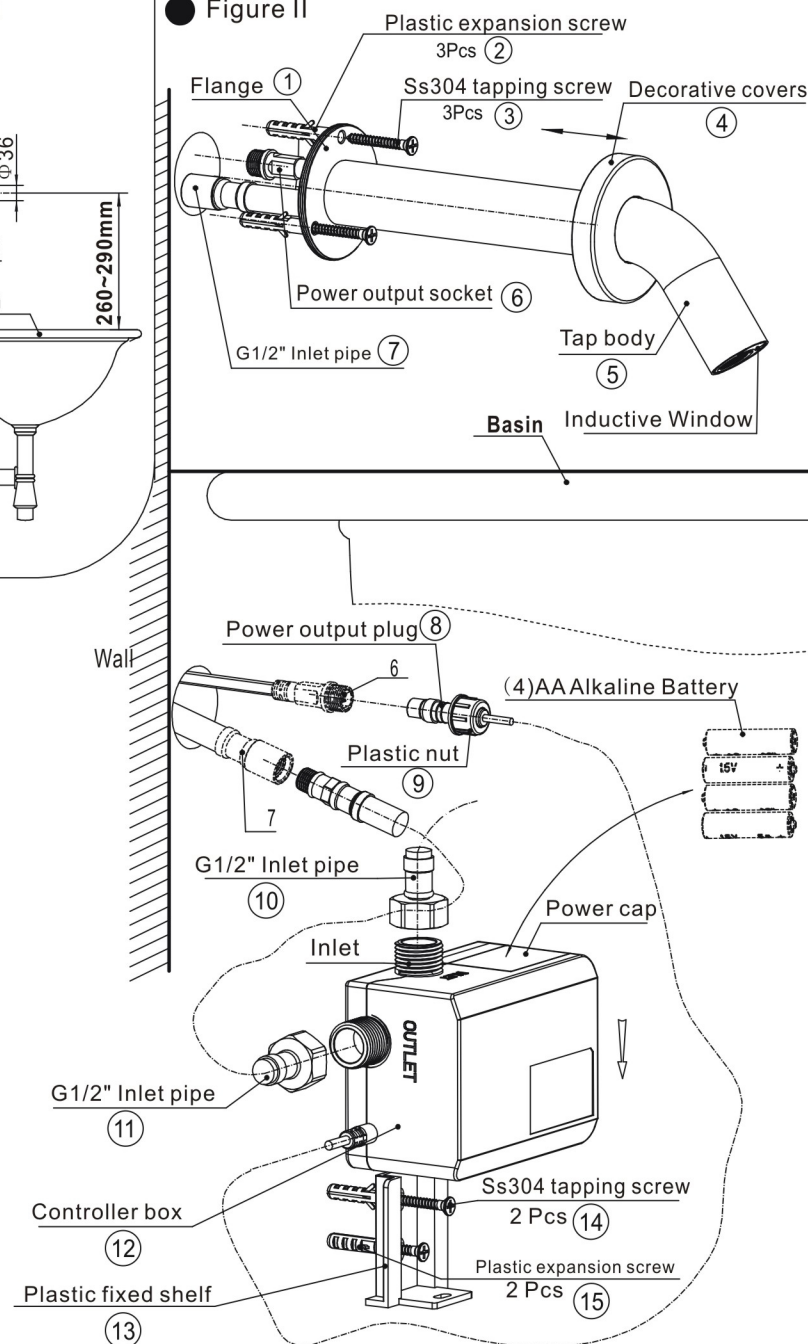
Tel: 0044 800 862 0878

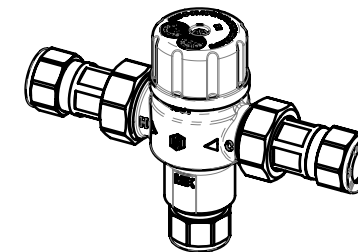
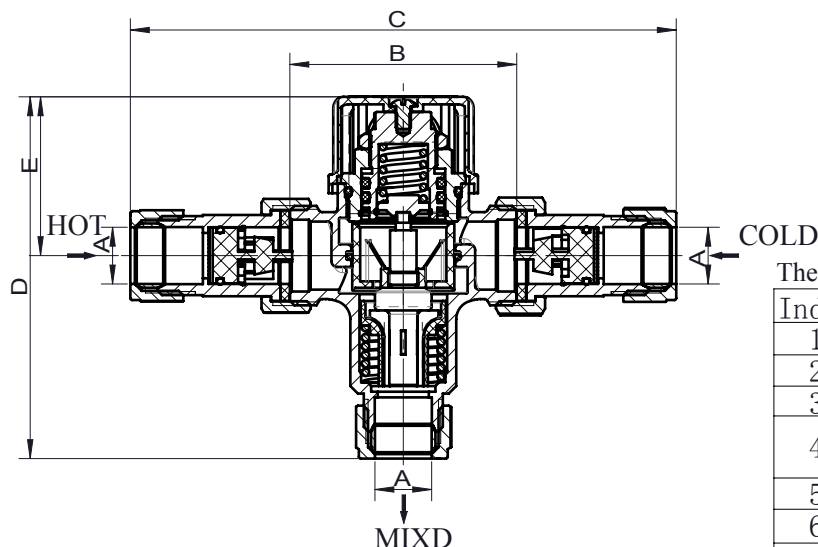
Website: www.victorianplumbing.co.uk

● Figure I



● Figure II





The below parts are contacting with water which are noted by \*

Index	Part name	Material	QTY
1	*valve body	CW602N	1
2	*spring	SUS304	1
3	*water flow directors	PSU	1
4	*thermostat	Subassembly	1
5	*piston	PSU	1
6	*O-ring	EP7118F	1
7	*block	CW602N	1
8	*circlip	SUS304	1
9	*spring	SUS304	1
10	*O-ring	EP7118F	2
11	*stem	CW602N	1
12	*o-ring	EP7118F	1
13	*circlip	SUS304	1
14	*bonnet	CW602N	1
15	Lock nut	CW617N	1
16	cap	ABS	1
17	screw	SUS201	1
18	*gasket	EP7118F	2
19	*check valve	acetal	2
20	*strainer	SUS304	2
21	*connect pipe	CW602N	2
22	union nut	CW617N	2
23	*compression olive	T2	3
24	union nut	CW602N	3

#### Performance

- 1.Cold water supply temperature: 5°C ~ 20°C
- 2.Hot water supply temperature: 56°C ~ 65°C
- 3.Temperature adjustment range: 30°C ~ 46°C
- 4.The thermostatic controller is supplied factory pre set at 42°C.
- 5.Accuracy of outlet temperature:  $\pm 2^{\circ}\text{C}$
- 6.Minimum temperature differential: 12°C  
(between hot supply and outlet temperature)
- 7.Supply pressure,static: 10bar
- 8.Supply pressure,dynamic: 5bar
- 9.Supply pressure imbalance dynamic: 2:1
- 10.Flow rate minimum: 4litres/min
- 11.Valve Specifications:  $\phi 15\text{mm}\&\phi 22\text{mm}$

Model	DN Size	A	B	C	D	E
24001158000	$\phi 15$	$\phi 15$	60	144.5	97	43
24001228000	$\phi 22$	$\phi 22$	63	157.5	99	43

4001

DWG.NO : 24001158003  
24001228003 EDITION  
A

TITLE :

Thetmostatic Mixing Valve

MATERIAL:

See above table

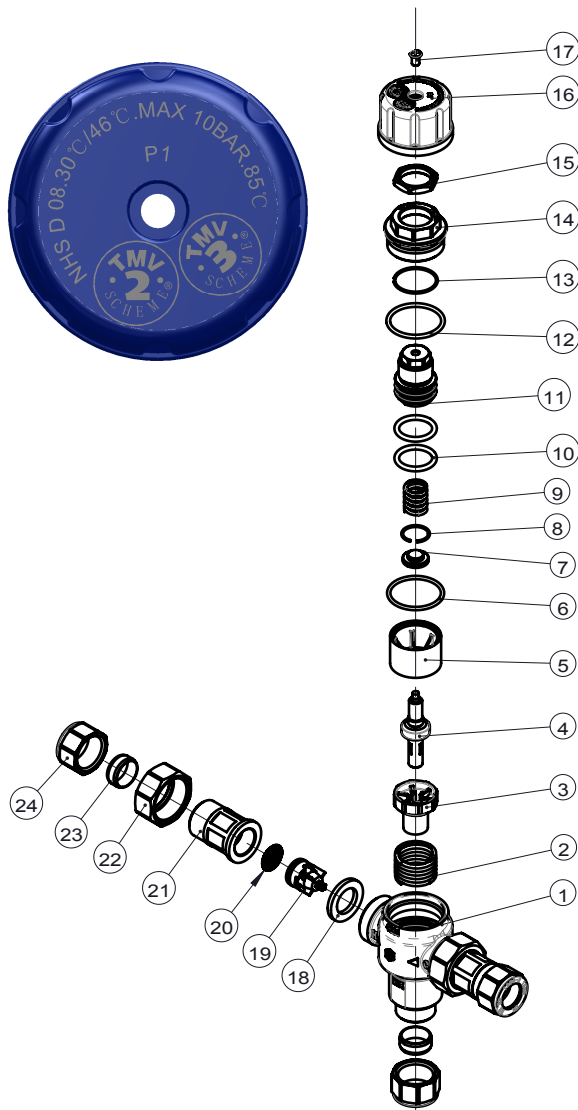
PROJECTION MEANS  
DESIGN SIGN  
S A B  
PAGE OF

PRIMO ANGLE  
G.W. N.W.  
SCALE

DRAWING UNIT  
mm



Yorhe Fluid Intelligent Control Co.,LTD



TOLERANCE UNLESS DIMENSION GB/T 1804-m	(mm) [d\Q]	R^JRT] caXRXch
$\leq 6$	$\pm 0.1$	$\Phi 0.3$
$> 6 \sim 30$	$\pm 0.2$	
$> 30 \sim 120$	$\pm 0.3$	
$> 120 \sim 400$	$\pm 0.5$	

Mark	Times	Mod.No.	Signature	Date
DRAWN	Radman	2014. 11. 05		
CHECKED	XGW	2014. 11. 05		
PROCESSOR	LWF	2014. 11. 05		
STANDARDIZATION	YSY	2014. 11. 05		
APPROVED	YSY	2014. 11. 05		

注:1、本图纸盖有样品章的只用于样品开发,不应用于正式生产。2、本图纸盖有受控章的,应用于正式生产。3、本图纸没有盖章为无效图纸。